



Issue No 557 May 2025

A grand day out!



Members of The Megalosaurus Society recently had a unique opportunity to help clean a footprint trackway which had been created by large terrestrial dinosaurs some 166 million years ago. We were at the Viridor Energy Recycling Facility (ERF) at Ardley where waste is recycled to create electric power.

Interestingly, when the facility was to be built, and in recognition of the importance of the site, the architect designed the building in the form of a Megalosaurus footprint with three

toes extending from the main body of the building. On entering the visitor centre, one is greeted by a life-size sculpture of Megalosaurus created entirely from all manner of discarded household objects.

Once we had been kitted out, head to foot, in PPE, we were allowed to investigate the limestone and clay formations known as the Ardley and Shipton Members where large numbers of small marine fossils are to be found.

Continued on p5



Have you given your feedback on the Stonesfield draft Neighbourhood Plan? If not, see page 14

Do you want to send in an article but have no email?

Just call the editor (see below) who can arrange to collect your handwritten copy.

Do you want to advertise?

An advertisement in *The Stonesfield Slate* starts from as little as **£3 per month**.

Please email **publisher@stonesfieldslate.uk** or call the Publishers on 01993 898841, for full details of availability, sizes, requirements and cost. We can also help with design if required.

Any new advertisements, or changes to existing advertisements, should be emailed to **publisher@stonesfieldslate.uk** by **10th of the month**. All advertisements must be **paid for in advance**.

Disclaimers and notices

The Stonesfield Slate is a village amenity, produced and distributed by volunteers. It cannot be held responsible for any of the views expressed in its pages nor does it endorse any of the products or services advertised.

Articles are solely the responsibility of the writers and their opinions do not necessarily accord with those of the Editors or Publishers.

Whilst we strive to ensure all information is correct, we are not responsible for anything that happens as a result of you using the information. If you find any errors or omissions then please contact the Publisher and we will endeavour to correct them.

Dates for your diary are always subject to change. Please check with event organisers.

The Editor and the Publishers reserve the right to edit, shorten or omit any article submitted.

Your contact details are held by *The Slate* while you are in correspondence with us or advertise in *The Slate*. This information and your legal rights are protected by our Data Privacy Policy, which is available on request from the Publishers.

Publishers

Diane & Paul Bates,
Waterloo Barn, Laughton Hill,
Stonesfield, OX29 8DY
(898841)
publisher@stonesfieldslate.uk

Editor for June issue

Viv Kendall
(891803)
editor@stonesfieldslate.uk

Copy:

Deadline for next issue 15 May
Please email copy to
editor@stonesfieldslate.uk
or contact the Editor by phone.

Editor

Trisha Williams
(891960)
editor@stonesfieldslate.uk

Printer

Windrush Press, Witney
©*The Stonesfield Slate* 2025

Advertising:

Deadline for next issue 10 May
Advertisements to
publisher@stonesfieldslate.uk

Current and past copies of the *Slate* are available at www.stonesfield.online

Dates for your diary: May

1	County Council elections	Village Hall	7am -10pm
1-31	Pictures @ The Pub: Spring Show	The White Horse	pub hours
1,7,8,14,15	HiTT Class	Village Hall	7-7.45pm
1,8,15,22	Upholstery Group	Village Hall	9.30am-12.30pm
1,8,12,15,19,22	Taekwondo	Village Hall	5.30-6.30pm
2,9,16,23	Baby & Toddler Group	Village Hall	10am-12noon
3	Neighbourhood Plan	deadline for feedback 4pm	
4	Darts competition	Sports & Social Club	1.30pm start
6	North Leigh Hist Soc: Oxford Castle	NL Memorial Hall	7.30pm
6	Stonesfield Tennis Club: AGM	Village Hall	8pm
6,13,20	Stonesfield Social	Village Hall	5-6.30pm
6,13,20,27	Strong Nation HiTT Class	Village Hall	8.15-9.15pm
6,13,20,27	Zumba	Village Hall	7-8pm
6, 20	Dommys	Sports & Social Club	8pm
7	Parish Council meeting	Primary School	7pm
7	Annual Parish Council meeting	Primary School	7.30pm
7,14,21,28	Folk Dancing	Village Hall	7.45-10pm
7,14,21,28	Gatehouse Pilates	Village Hall	9.30-10.30am
8,15,22,29	Book Break	Library	12.30-2pm
10	VE Day 80th Anniversary celebrations	Woodstock	4-8pm
10	Hockey Club Social	Sports & Social Club	8pm
10	FoSS Quiz & Curry Night	Village Hall	(see p8)
11	Bridewell Gardens Open Day	Bridewell Gardens	11am-4pm
12,19	Monday Coffee	St James' Centre	10am-12noon
12	Stonesfield Gardening Club: Bees	St James' Centre	7.30pm
13	Bingo	Sports & Social Club	7pm
14,28	Quiz	Sports & Social Club	8pm
17	Ladies' Breakfast	St James' Centre	9am
17	Finstock Village Music Festival	Well Hill, Finstock	12 noon-4pm
17	Men's End of Season 'Do'	Sports & Social Club	Evening
17-26	Sculpture at Kingham Lodge	Kingham	(see p20)
18	'In Steam' event: Classic Wheels	Combe Mill	(see p22)
18	Stonesfield Community Pub: AGM	Village Hall	5pm
21,22,28,29	HiTT Class	Village Hall	7-7.45pm
24	Music from Ollie Charles	Sports & Social Club	8.30pm
25	Pool Tournament	Sports & Social Club	1.30pm

Notices & news

Jean Hall

Jean's family would like to thank everyone for their condolences after the sad passing of Mum on 19 March, just short of her 95th birthday. Mum and Dad loved Stonesfield after coming back here to live in 1969.

Although Mum had been in a care home at Shipton-under-Wychwood since 2021, we always took *The Slate* for her to look at so she could keep up with the village and what was going on. She will be missed.

Rosemary and Stephen

Monthly folk sessions at The White Horse

We will be unable to lead the monthly Tuesday night folk sessions at The White Horse for a few months as Nick is having an operation in May and an extended recovery period is expected. Therefore there will be no sessions from May and we intend to resume in September.

Nick and Judith Hooper

Stonesfield Community Pub

Annual General Meeting

The Annual General Meeting of Stonesfield Community Pub Ltd will be held at 5pm at Stonesfield Village Hall on Sunday 18 May. This will be the first AGM to be held since the pub fully reopened last year and we're looking forward to reporting on progress and future plans, plus answering any questions you may have for us to the best of our abilities.

We invite questions to be sent in advance to steve@backthewhitehorse.com for consideration. Knowing the type of enquiries in advance helps us to prepare more informative answers for you. The minutes will be circulated to members after the meeting and a report will appear in *The Slate*.

Do you own a B&B?

If you own any bookable accommodation in Stonesfield, we invite you to forward the relevant details to steve@backthewhitehorse.com as we are compiling a list of places for non-local members to stay should they wish to visit The White Horse and the surrounding area.

Steve Callaghan

Chair, Stonesfield Community Pub Ltd

steve@backthewhitehorse.com

Please use our new email addresses

Articles: editor@stonesfieldslate.uk

Advertising and enquiries: publisher@stonesfieldslate.uk

Woodstock celebrates VE Day 80th Anniversary

On Saturday 10 May, 4-8pm, Woodstock's Market Square will host a street party to mark this year's milestone anniversary.

Enjoy live 1940s-style music, living history and military vehicle displays, plus great food from local businesses and fun for the whole family.

Drop into the Soldiers of Oxfordshire Museum for the VE Day exhibition and VJ Day talk and stay around for the party!

A grand day out! (Cont)

We were then taken to the trackway to work on the footprints. The track is about 70 metres in length and contains some 24 footprints. After a couple of hours scraping and brushing, we ended up with pristine footprints and some very sore knees!



The footprints had a raised edge of mud which indicates that the sediment was soft when the imprint was made. Our final task was to measure the distance between the footprints and this indicated that the stride of these gigantic creatures was about three metres.



Everyone was delighted to be involved with this project and grateful thanks are extended to Owen Green of the Oxfordshire Geology Trust, Dr Carol Lister, University of Oxford, and Jessica Baker-Pike at Viridor.

The Megalosaurus Society
megsoc25@gmail.com

Voluntary Transport lifts: your information

Even small organisations like ours are required by law (General Data Protection Regulation or GDPR) to have a clear statement of what personal data they collect, use and store in running their services.

Clearly, when we arrange transport for you to a medical appointment, we need to ask for a minimum of information in order to find you and take you where you need to go.

This information is only shared with the driver concerned with your appointment, and is deleted from our records six months after the date of the lift.

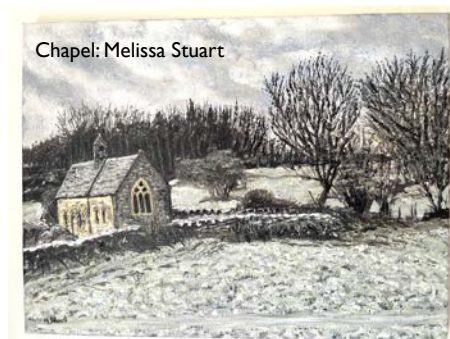
Our full data privacy notice for clients is available on request.

Viv Kendall
Stonesfield Voluntary Transport Scheme
stonesfieldvts@gmail.com

Ladies' Breakfast

There will be a Ladies' Breakfast on Saturday 17 May at 9am in the St James' Centre. Come and enjoy a delicious breakfast followed by a short talk. The cost is £5. If you would like to know more, please get in touch with Bina (891293), Kathleen (891733), Muriel (891479) or Suzy (891552).

Pictures @ The Pub: Spring Show



From mid-April and throughout the month of May, The White Horse is hosting our Spring Show, a group exhibition celebrating the work of Stonesfield's artistic community. This will run alongside the Oxfordshire Artweeks festival which is scheduled for 3-26 May, with North & West Oxfordshire's designated week being 17-26 May.

Those participating at The White Horse are Paul Bates, Theresa Jozwin, Robin Letchford, Jenny Lines, Diana Parker Letchford, Rachael Sherlaw-Johnson, Melissa Stuart, John Taylor and Juliet Taylor, and the exhibition will include oils and watercolours, etchings and monoprints, botanical drawings, and illustrated children's poetry.



Elsewhere in Stonesfield, Claire Fyfe-Jackson and Hannelore Meinhold-Morgan will be opening their studios during West Oxfordshire's designated week so there should be plenty of interest to see!

More information on what is taking place throughout the county can be found at: www.artweeks.org.

Trisha Williams for Pictures @ The Pub
trwynwil003@gmail.com

Claire Renshaw for The White Horse
Community Pub

Stonesfield Primary School: Year 6 Leavers' event – help us make it unforgettable!

As the summer approaches, our fantastic Year Six pupils at Stonesfield School are preparing to say goodbye and move on to secondary school in September. To mark this milestone, we are planning a memorable leavers' event in July to celebrate their achievements, friendships, and time spent together at Stonesfield.

We want to give them a truly special send-off, but we need your help to make it happen! We are looking for sponsorship and donations from local businesses, community members, and anyone else who would like to support this wonderful group of young people. Your contribution will go directly towards creating an unforgettable

experience for our leavers, filled with fun, laughter, and lasting memories.

Whether you can offer financial support, donate items, or help in any other way, every little bit makes a difference. If you would like to get involved or find out more, please contact Kate England: kateengland78@icloud.com or Cheryl Hitchcox: chitchcox@hotmail.com .

Thank you for helping us give our Year Six pupils the send-off they deserve!

Kate England

Celebrating Stonesfield's heritage

As many readers will know, we have a unique opportunity to create something very special for the village – a reproduction of the poem *Megalosaurus* written by Simon Armitage, the Poet Laureate, which was commissioned by Oxford University Museum of Natural History to mark the bicentenary of the world's first scientific naming of a dinosaur. The poem is featured in OUMNH's exhibition *Breaking Ground* which focuses on William Buckland, Stonesfield and Megalosaurus, and runs until late September.

A display board for permanent public exhibition will include the text of the poem together with information explaining the importance of Stonesfield's place in the history of geology and palaeontology. We hope to have the board installed on the garden wall of The White Horse before the autumn so that everyone can enjoy it.

The supporting text and the design are currently being agreed with Simon Armitage and the Museum. In the meantime, we have started our fundraising campaign which will reach out to

Megalosaurus Society members and the wider village community. We will also be applying for any relevant grants which may be available to us.

If you would like to be a part of this celebration of Stonesfield's heritage by making a donation, please get in touch with us. Any donations, however small, will be gratefully received and we thank you in advance for any support you are able to give.

Trisha Williams (891960)

Viv Kendall megsoc25@gmail.com

The Megalosaurus Society

Finstock Village Music Festival

Finstock Village Music Festival takes place on Well Hill on Saturday 17 May, 12 noon-4pm. There will be a procession, folk music in the Bower, Morris dancing, history spot, kids' tent, bar and a barbeque with gluten-free and vegan options. Admission is free and proceeds will go to Finstock for Nature. Please call 07854 514102 for more information.

Kath Lucas

A little win for the pub!

The pub was recently shortlisted for North Oxfordshire CAMRA Pub of the Year. After the votes were counted, we came third which was a proud accolade for myself, especially after such a short time in charge, as I strive to give you the best choice and quality of local ales around. A quick 'thank you' to everyone who enjoys the pub and the ales, and to anyone who voted. Onwards and upwards in making this the best community-owned pub around!

Craig Tipper

Friends of Stonesfield School: Quiz Night

The Friends of Stonesfield School are pleased to present a Quiz & Thai Curry Night at Stonesfield Village Hall on Saturday 10 May with Thai curry from Nuak, Finstock's fantastic pop-up. There will be teams of six people – if you haven't got a team, we can help you with joining a team on the night. Bar and prizes to be won! The event is bookable via the QR code on the poster or by emailing sarah@fossteam.org.

Stonesfield Players: Annual General Meeting

Please come and join Stonesfield Players for our Annual General Meeting on Wednesday 4 June at 8pm at the St James' Centre. We will review the last twelve months and present plans for future productions, social events and fundraisers, as well as voting in new committee members.

New Players members and committee members are always welcome!

Sandy Hayes, Chair



St James: Summer Quiz Evening

Our Summer Quiz Evening takes place on Friday 6 June at 6pm at the St James' Centre.

Are you ready for another challenge, fun and good company? Come and join in - bring your family, friends, or come on your own - everyone very welcome. Buffet supper at half-time - all free of charge.

It would be helpful to have an indication of numbers, so if you know you would like to come, please contact me.

Lindsey Sellar, Churchwarden (898757)
stonesfield@stonesfieldparishchurch.org



Contacting The Stonesfield Slate

A reminder that *The Slate* email addresses have changed. To submit an article, please email editor@stonesfieldslate.uk. To advertise, or for general enquiries, please use publisher@stonesfieldslate.uk

The editorial team and publishers are conscious that not everyone has access to email and/or a computer. If you are in this situation and would like to submit something for publication, please get in touch with the Editor in order to make alternative arrangements. We are happy to collect something handwritten from you or to take it down over the 'phone. The Editor's name and contact number appears on page 2 of each issue.

Paul & Diane Bates

Slate Publishers

publisher@stonesfieldslate.uk

Bridewell Gardens

Bridewell Gardens provides a mental health recovery service for West Oxfordshire, supporting people who have experienced serious mental illness. Bridewell is a creative and inspiring walled garden and vineyard where people can find hope in recovery, gardening and working with nature.

BBC Gardeners' World presenter, Frances Tophill described Bridewell after filming at the gardens: 'Sometimes for my job I visit gardens that really seemed to mean more than just places to grow. Bridewell Gardens is one such place. Filled with community, kindness, bustle but softness'.

The walled garden and vineyard are open to the public for our Open Days between 11am and 4pm on: Sunday 11 May, 15 June, 6 July and 7 September. There will be a pop-up café in the garden for tea and cake, high quality plants for sale, home produced jams and chutneys, and our acclaimed organic sparkling wine.

Make a day of it, bring a picnic blanket and relax in the vineyard with friends and family. Dogs on leads are very welcome. Families and children are encouraged to explore the site. Booking is not required and there is a suggested donation of £5 per person.

Bridewell Gardens, The Walled Garden, Wilcote, Oxfordshire, OX7 3DT (Please check the map before your visit as sat nav is not always reliable.)

Rachel Green

www.bridewellgardens.org

Stonesfield Village Hall

Please note contact details and website below.

We have continued to be super-busy at the Hall over April. The new phone number, booking system and website offer our calendar and online booking allows our regular users to amend and book use, and new users to see our free times and book accordingly. We hope that it continues to help speed up the booking process and makes life easier for everyone – if there are any issues please just contact me.

Following a busy month in April, May is looking just as busy starting on Thursday 1 May when the Hall serves as a Polling Station, so don't forget to vote in the local elections!

Saturday 10 May is the Friends of Stonesfield School's Quiz Night, and Sunday 18 May is the Stonesfield Community Pub Annual General Meeting when there will be a chance to see the plans to secure the ongoing sustainability and future of The White Horse, our community pub.

On 23 May, First Aid training will be taking place, If you would like to take advantage of this, please get in touch with Act Fast First at www.actfastfirst.co.uk or email to: info@actfastfirst.co.uk.

Another reminder of our **Stonesfield Village Garage Sale** which is planned for 5 July. Keep a look out for how to get on the map but do save the date for now.

Claire Renshaw (07359 338490)
info@stonesfieldvillagehall.com
www.stonesfieldvillagehall.com

New aromatherapy massage business in Stonesfield

Do you suffer with anxiety or depression, sleep deprivation or hormonal issues? Do you have a child who is overwhelmed and struggling with exams - or maybe you can't shake off seasonal respiratory symptoms... if so, book an appointment and come and see me!

My name is Lucy. I'm a newly-qualified aromatherapist and have just started my new business - Lavender End. I am offering bespoke aromatherapy massage and products to women and children from my beautiful treatment room in Stonesfield.

At Lavender End, I use essential oils extracted from plants to promote therapeutic benefits for the body and mind through a deeply immersive aromatherapy massage. Each oil contains complex compounds that interact with the body in a way similar to human hormones, enhancing wellbeing and balance. At Lavender End, there is plenty of parking, a personalised service, a cosy warm room and a chance to fully relax and unwind.

For more information and introductory offers, look out for my advertisement in *The Slate* (p31) and follow my Facebook and Instagram pages.

Lucy Martin (07552 653000)
lavenderend8@gmail.com

Stonesfield Players: Safari Supper

The Stonesfield Players are holding another Safari Supper on Saturday 7 June at 7pm. Do join us for an evening of gastronomic delights and lots of fun, all mingled with a wander around the village to a different venue for each course. The evening will begin at The Old Bakery, Boot Street, and throughout the evening you will enjoy a four-course meal, ending together for cheese and biscuits. All are welcome. If anyone is interested in hosting, please contact Ros Mengech. Attendance is by booking only. Tickets are £19.50 per person and can be booked with Ros Mengech by Monday 5 May.

Ros Mengech (07852 584688)
ros_mengech@yahoo.co.uk

Repair and Community Café

We all know we should be reducing our use of consumable items, to re-use them when we can and ultimately to recycle them. West Oxfordshire is a very good area in the country for recycling; according to the Council's website, West Oxfordshire is in position 20 out of 34 local authorities.

At Stonesfield Repair Café, we really care about reducing the number of items sent to landfill – did you know we weigh the items brought in, and calculate how much we have saved from landfill through our repairs? We can't fix everything though and sometimes items just have to go! Before you arrange a trip to the waste

centre, try bringing your item to the Repair Café first and we'll do our best to fix it.

The next Repair Café will take place on Saturday 14 June from 10am to 2pm. On the same day, we would love to see you at the Community Café in the club room at the Village Hall. From 10am there will be fresh coffee, tea and delicious homemade cakes on offer. Then from 12 noon lunch will also be available (as well as cakes) in the form of soups with a selection of breads - all homemade. Although we do suggest prices, we operate on a 'pay what you feel' basis, with all proceeds used to support village causes.

If you're bringing items to the Repair Café, do come and join us in the club room for coffee/cake/lunch whilst you're waiting for the repair experts to work their magic!

The Repair Café team
stonesfieldrepaircafe@gmail.com



Please use our new email addresses

Articles: editor@stonesfieldslate.uk

Advertising and enquiries: publisher@stonesfieldslate.uk

Combe Women's Institute

The main principles of the Women's Institute are to encourage friendship, tolerance, learning and community spirit, and Combe WI certainly ticks all of those boxes. We are an enthusiastic group of women from Combe and Stonesfield and we have an exciting year ahead with a varied programme of speakers, outings and activities.

If you are interested in joining the WI, then why not come along as a guest (up to three meetings each year) at a cost of just £6 per meeting which includes a raffle ticket and refreshments. Membership is open to all women over the age of 18. The annual subscription of £51 is now due and this covers 11 meetings taking place throughout the year.

Meetings are held on the second Monday of each month in the Reading Room at Combe from 7.30pm to 9.30pm. Our next meeting is on Monday 12 May when Clive Stayt will be talking to us about Combe Mill.

We are also in the early stages of setting up WIWAC (Women's Institute Walk and Cake) which will be led by Margaret Moore so that is another good reason to come along!

Please call or email me if you would like further information about the WI.

Julia Sharpe, Secretary (891058)
combewi@oxfordshirewi.co.uk

Local elections: 1 May



Voters across Oxfordshire are being encouraged to vote in the Oxfordshire County Council elections on 1 May. **Polling stations are open from 7am to 10pm.** Voters are now required to show photographic identity in the polling stations, further information can be found at www.westoxon.gov.uk/voterid. Poll cards have been sent to all registered voters at the end of March. More information is available on the WODC website.

Do you have a story to tell?

We hope you have enjoyed the history, nature, other articles and historic photographs which have appeared in *The Slate*.

We're hoping to find more Stonesfield residents who will contribute their own articles (or photographs) to publish throughout the year.

If you have a story to tell, or photographs to share, please send it to me.

The Editor
editor@stonesfieldslate.uk

Politics & local affairs

Stonesfield Parish Council

From the Parish Clerk

Report on the Parish Council meeting held on 2 April 2025.

Neighbourhood Plan: Have your say!

The Neighbourhood Plan consultation is ongoing (see p14). The Council will review feedback at the end of May and hopes to have the next steps in place soon.

Modernising our Council Services

The Council is moving forward with modernising its digital tools:

- Moving to Microsoft 365
- Planning a dedicated Parish Council website
- Looking into official government email addresses for councillors

Committee news

The Human Resources Committee has now set its terms of reference and in May new working groups will be formed to keep village life running smoothly. These new working groups will focus on specific projects designed to support and enhance our community. Please get in touch if you are interested in joining these groups once they are formed.

Updates from County and District Councillors

Oxfordshire County Council: Cllr Andy Graham gave an update on the following:

- New doctor's surgery in Woodstock: 1,200 sqm, £8m build, decision expected in six-eight weeks. Timeline: Three-four years to completion.
- Windrush Valley HGV study is ongoing.
- Plans to rebuild Woodstock Library as a community hub, including public toilets.

West Oxfordshire District Council: Cllr Genny Early gave an update on the following:

- WODC Youth Development Officer is in place.
- Potential for skatepark suggested.
- Empty Homes initiative ('Lendology' scheme) launched which offers loans to bring empty homes back into use.
- A botanical survey on a rare lily is taking place in Whitehill Woods.

Next Parish Council Meeting: 7 May

The next meeting comprises the Annual Meeting of the Parish Council at 7pm followed by the Annual Parish Meeting for the electorate at 7.30pm, both at Stonesfield Primary School. Everyone is warmly invited - it's a great opportunity to hear what's happening in the village and have your say!

Kay Linnington
clerk@stonesfieldpc.uk

Neighbourhood Plan

Deadline for your feedback:

Saturday 3 May

The Neighbourhood Plan steering group has mounted two exhibitions publicising the draft Plan to the village. The first was on 15 March in the Village Hall. Hopefully you will be reading this in time to get to the **second exhibition on 29 April in the St James' Centre**. It's open from 2-8 pm and we encourage you to come along: it's a good chance to ask us questions and voice your opinions.

You can read the draft Plan online at **www.stonesfield. online/ neighbourhood-plan** or in hard copy at the library. Please scan the QR code to open the Stonesfield website and access both the draft Plan and feedback form online.



An essential step in this public consultation is gathering your feedback. The deadline is Saturday 3 May at 4 pm. Please get your feedback to us now! Use the short form on the village website. There are paper forms in the Library and opposite this article. If you use the form in *The Slate*, please attach extra pages for any longer comments you wish to make.

Please return completed hard copy feedback forms to the Parish Council letterbox at the Village Hall entrance, or to the box in the village shop.

The Plan has been based on the responses residents (both individuals and households) gave to the village survey in 2023. It covers housing and design, sport, recreation and community facilities, transport, road safety, walking and cycling, health and education, local green spaces, biodiversity, trees and water quality management, sustainability, local archaeology and heritage.

It is a vital document which will have legal status when future planning applications for new housing in the village are considered. Your feedback on the draft Plan is an essential part of the process, and will be taken into account when we finalise the Plan before submitting it to the District Council.

Caroline Friend

info@stonesfieldplan.com

Giving Feedback

Thank you for completing the feedback form opposite or via website. Your responses will be treated anonymously. Postcode information is collected for data processing purposes only. Please note that the data in this form is anonymous and therefore any rights arising under the Data Protection Act do not apply. For any additional communication about the draft Neighbourhood Plan, please contact the Stonesfield Parish Council Clerk: clerk@stonesfieldpc.uk

All feedback forms must be submitted by Saturday 3 May 2025 at 4pm.

1 Please tick the boxes that apply.

I live in Stonesfield Parish ☐ *(Please complete Q2)*

I work or carry out business in Stonesfield Parish ☐ *(Please complete Q3)*

2 My Stonesfield home postcode is _____

3 My Stonesfield place of work or business postcode is _____

4 Have you read the draft Stonesfield Neighbourhood Plan and/or visited the exhibition? Tick one only:

Yes ☐ No ☐

5 How satisfied are you that this draft plan meets the needs of Stonesfield community? Tick one statement only:

A. Satisfied ☐

B. Fairly satisfied ☐

C. No opinion ☐

D. Fairly dissatisfied ☐

E. Dissatisfied ☐

We would now like to give you the opportunity to record any comments about the draft Plan.

6 What specific areas of the draft Plan, if any, did you particularly like?

7 What specific areas of the draft Plan, if any, could be improved?

8 Is there anything else that you would like us to know about the draft Plan?



West Oxfordshire District Council

From your District Councillor

Youth Development Officer

James Edney has started at WODC as the Youth Development Officer. This role was born out of the Youth Needs Assessment 2023 which heard from almost 4,000 young people across the District and identified barriers they faced accessing positive activities and issues they considered most important to them. James plans to reach out to parish and town councils where young people appear to be in need of support. Stonesfield & Tackley is one of these. We need to help James understand the challenges that our rural communities face when seeking to engage young people and what worked and did not work so well in the past.

WODC loans to renovate empty homes

WODC has announced a new initiative to bring empty homes back into use, helping to increase housing supply and improve neighbourhoods across the district.

At the end of March 2024, there were 1,128 properties in the district registered as long-

term empty, with 125 of these vacant for over two years. Many of these homes require financial investment to be made habitable again. This can be due to people inheriting homes in a poor state of repair or homes being stood empty for long periods.

The Council's new loan scheme, delivered in partnership with Lendology, a not-for-profit social enterprise lender, will provide financial support to property owners who need help to renovate empty homes.

Wychwood Flora Group

It is the start of the new survey season for the Wychwood Flora Group. We have a full programme of plant surveys at local sites, including Sunday 1 June, 10 am at Combe, for Meadow clary *Salvia pratensis* and at Combe Fen. The full survey calendar is available at www.wychwoodforesttrust.co.uk/about-us The Flora Group is very friendly, and welcomes new volunteers with no or any level of experience.

Genny Early

genny.early@westoxon.gov.uk

County Councillor Annual Report May 2024/April 2025

Area Covered: Woodstock, Bladon, Stonesfield, Combe, Wootton, Kiddington, Tackley, Steeple Barton, Westcote Barton, Sandford St Martins

Attended: over 60 meetings of the parish councils and 12 county council/committee including: Education and young People's Scrutiny Committee and Locality Meetings.

Site Visits/inspections: over 40 locations (highways, flooding and railway crossings)

External Representative for OCC and meetings/events attended on Cotswold Woodstock Traffic Advisory Group, Woodstock LCWIP, Cotswold National Landscape Board, Oxfordshire Museum and Oxford Airport Committee

Stonesfield - Supported the fantastic community initiative with a £5,000 grant to save The White Horse pub. Instigated an engineer's approach to solving the flooding issues on Laughton Hill and new measures to ensure safe walking to school. Measures in Pond Hill to be introduced in 2025.

Wootton - Supported the overhanging silver birch tree issue in Burditch Bank and looking to introduce a new bus shelter with the parish council as part of a new road layout scheme at the junction of the A44 (Judds Garage/Duke of Marlborough) and the funding towards a bus shelter.

This is an extract - for full report see www.stonesfield.online/category/parish/

Andy Graham

County Councillor - Woodstock Division

Andy.Graham@Oxfordshire.gov.uk

YOUR LIBRARY NEEDS YOU!



Time to spare?

Looking for a new opportunity?

Friends of Stonesfield Library would like to meet you!

We support the library service by sharing the opening hours with the professional manager.

If you enjoy reading and helping people, this is the volunteering opportunity for you!

We work in pairs and carry out a variety of tasks during a session (usually one session of 2-3 hours per month).

Interested?

Come along to Stonesfield Library to find out more or contact Mike Pollitt on 01993 891856.

Neighbourhood Watch

Information on Neighbourhood Watch is available at: www.ourwatch.org.uk

Anyone interested in joining the Neighbourhood Watch Scheme may find details and register at: www.member-registration.neighbourhoodalert.co.uk/30/Join. Clicking on 'Join a scheme' and selecting 'Stonesfield' will complete the request.

Police and community support: For information or advice on security concerns, please call 101 or contact woodstockNHPT@thamesvalley.pnn.police.uk

Deanna Asplundh

Stonesfield Neighbourhood Watch

Coordinator

Thames Valley Alert

Hare coursing

High-visibility patrols have been carried out recently in and around the rural areas of West Oxfordshire to disrupt hare coursing taking place in our local areas.

If you suspect hare coursing is taking place, or any other rural crime for that matter, please call the police.

A 'hare coursing event' is a competition in which dogs are, by the use of live hares, assessed as to their skill in hunting hares.

The Hunting Act 2004 makes it an offence to:

- A. Participate in a hare coursing event
- B. Attend a hare coursing event
- C. Knowingly facilitate a hare coursing event
- D. Permit land to be used for the purpose of a hare coursing event
- E. Enter a dog in a hare coursing event
- F. Permit a dog to be entered in a hare coursing event
- G. Control/handle a dog in the course of/ for the purpose of a hare coursing event.

Land Rover Defenders

Thames Valley report that old-style Land Rover Defenders are being targeted,

especially for spare parts, and have issued the following with regard to crime prevention methods.

- Install a high-quality immobiliser and a steering lock
- Track your Defender using a GPS tracking system which is hidden in a place where it cannot easily be found
- Use a gear lock or transmission lock
- Fit a visible car alarm
- Wheel clamps and tyre locks
- Secure vehicle doors and windows
- Use a hidden kill switch which interrupts the vehicle's electrical circuit
- Park strategically – in a well-lit, busy area or garage or fenced yard; if parked outside, position the vehicle close to walls, fences or other vehicles to make access more difficult
- Signage and visible deterrents – such as security stickers indicating that the vehicle is protected by tracking and alarm systems or use crime prevention systems which have been certified by Thatcham.
- Consider a professional security system such as CCTV around your property or in your garage, or an advanced security system which allows you to monitor your vehicle's movements via a smartphone app.

STONESFIELD VOLUNTARY TRANSPORT SCHEME

Our volunteer drivers are available to take you to local medical appointments or to the hospitals in Oxford and Banbury.
We make no charge but welcome a donation towards expenses.

Please call or email to book transport in May:
Viv Kendall 01993 891803 or stonesfieldvts@gmail.com

Education, culture & more

Stonesfield Library

Note our new phone number: 01865 815181

Opening hours:

Monday	2.30-7pm
Wednesday	10am-12 noon
Thursday	2.30-5pm
Saturday	10am-12 noon

Val Phillips (891455)

Friends of Stonesfield Library

Home Library Service

The Home Library Service is free and there is no charge for requests or late returns. To register for this service or for further information, telephone your local library or the Home Library Service on 01865 810259, or email to: homelibraryservice@oxfordshire.gov.uk

Deborah Wilson (01865 815181)

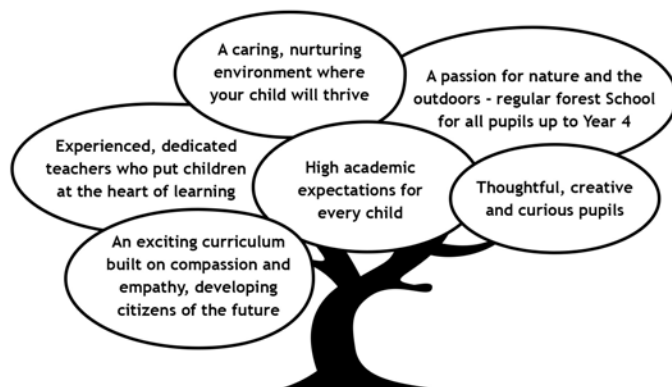
Library Manager

Stonesfield Primary School

Learning together to achieve our best.



Looking for a friendly, inclusive, local school for your child?
Stonesfield Primary School has places in all year groups - we would love to show you around.



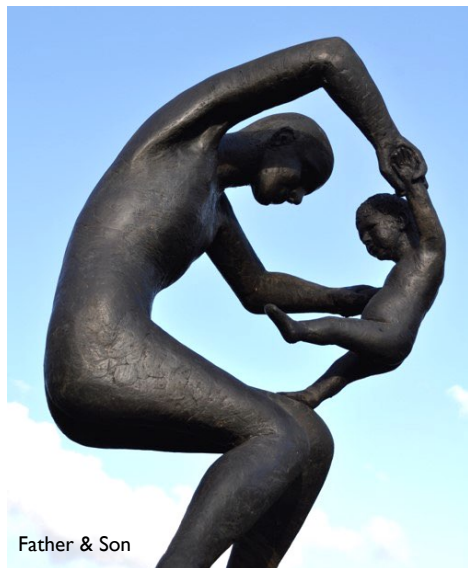
To arrange a tour with the headteacher, please contact the school office.

Tel: 01993 891687

Office email: office.2353@stonesfield.oxon.sch.uk

Headteacher email: head.2353@stonesfield.oxon.sch.uk

Sculpture at Kingham Lodge



Father & Son

This popular sculpture show has now been running for 14 years and draws thousands of people from all over south and mid-England. This year over 50 British sculptors will show their work alongside 60 Zimbabwean sculptors and 30 of our local schools. There will be pieces in stone, glass, pottery, steel, and resin with prices ranging from £10 to £20,000 - something for everybody.



Sculptures in a garden setting

You don't need a large garden to enjoy sculpture; you can appreciate a piece at home on a windowsill or fireplace indoors.

You may fall in love with a stone tortoise or tin porcupine, half-hidden by a bush just for a little fun. Or perhaps a life-size aeroplane (now installed in a village near here!), maybe a pair of dancing foals or boxing hares. We will also have excellent cakes, scones and soup for sale, so if you just want to visit the amazing gardens at Kingham Lodge and have a cup of coffee, you can.

Kingham Lodge gardens comprise five acres of herbaceous borders, shrubberies, woodland walks, rare trees, ponds and a wildflower meadow, not usually open to the public. The sculptures are integrated into planting all over the gardens and in the incredible Moorish Pavilion at the garden's heart. In May, the large collection of rhododendrons and azaleas will be in flower, a treat we don't often get in the Cotswolds.

The proceeds from the show support a range of charities including the local children's hospice, Helen & Douglas House and Cotswolds Arts through Schools which is taking art, music, dance and drama into 54 local schools and having a positive impact for 8,000 local children. Your donations will make a difference locally, nationally and internationally and you will have fun!

Our public open days are 17-26 May 2025, with admission by ticket available from our website www.sculptureatkinghamlodge for either morning or afternoon admission.

Stockwell Charitable Trust (01608 658226)



Wild Oxfordshire

Road Verges

Over 700 species of wildflower grow on road verges, which provide important linear habitats and wildlife corridors. We can combat the 20% drop since 1990 in floral diversity of verges (as reported by Plantlife) by adopting better management strategies to protect and cultivate grass verges. One of the best strategies to encourage your local parish to adopt is a two-cut management approach to suppress coarse grass whilst encouraging more diverse wildflower growth.

It is then also important to collect the cuttings. Wildflowers of species-rich grasslands grow best in lower fertility soils, whilst high fertility soils support vigorous grass growth. Therefore, taking the biomass, and thus nutrients they contain, away from the verge can reduce the layer of dead grass or thatch and 'open up' the soil surface to allow seed germination. Repeated over several years, this benefits less robust growth and more diversity, and therefore less management is required to create beautiful natural spaces on the roadside. For more help, see our guidance on verges at: www.wildoxfordshire.org.uk/guidance/helping-nature-on-your-patch

World Bee Day!

20 May is annual World Bee Day! Hopefully you are already helping bees get a wide range of diverse nectar sources by partaking in 'No Mow May'. Some other ways to help protect our declining bee populations include purchasing sustainable local honey, ditching harmful synthetic pesticides, providing a suitable water source for thirsty pollinators (which can simply be a shallow bowl of water with stones in it for bees to land on), or hosting

an event to raise awareness in your local area.

Wild Oxfordshire has brought people together, created more space for nature, and inspired more people to act for nature. Check out our website to find out more about our recent achievements and the many ways you can [support us](#).

Imogen Parker

Wild Oxfordshire Community Ecologist

www.wildoxfordshire.org.uk



Could you help a child to read and change their life forever?

Volunteers Needed

ARCh Assisted Reading for Children is an award-winning charity that operates in primary schools across Oxfordshire supporting children with reading.

All it takes is up to 90 minutes twice a week during the school day in a primary school near you.

Full training is given, as well as on-going support and access to a wide range of resources.



Scan the QR code to visit our website

To find out more, contact us:

01869 320380



info@archoxfordshire.org.uk



<https://archoxfordshire.org.uk>



The Queen's Award for Voluntary Service
The ARCh for volunteer groups

The charity obtains enhanced DBS checks on all volunteers before placement
Charity Number 1146276

.....

Combe Mill

Combe Mill is a late 19th Century Grade II listed water mill on the River Evenlode which, in its day, was the workshop for the Blenheim Palace estate.

On Sunday 18 May we will host ‘Classic Wheels’ at which we will welcome Fairford Classic Car Club to the Mill; if you are interested in classic cars, this is an event for you. The Mill will be open ‘in steam’ with machinery working and demonstrated by our volunteers, and children will find lots to do and see in the revamped ‘tinkering area’.

The tearoom will be open for refreshments which may be enjoyed in the picnic area by the river. There is a mini market and a gift shop in which to browse, along with tombola and a raffle. Dogs are most welcome and car parking is free.

Admission charges:

For ‘in steam days’: adults £9, seniors £7.50 and children free.

For self-guided tours every Wednesday up to the end of October (tea room open): adults £5, seniors £4 and children free.

If you have enjoyed your visit, why not enquire about volunteering – we would love to hear from you.

Margaret Gruber
Blenheim Palace Sawmills,
Combe, OX29 8ET
www.combemill.org

.....

North Leigh History Society

On Tuesday 6 May Mark Davies will be giving a talk entitled ‘Stories of Oxford Castle’. The castle has a long history and surely has some tales to tell! Do come and find out more.

We meet on the first Tuesday of the month in North Leigh Memorial Hall, OX29 6SA at 7.30 (doors open at 7pm). All welcome. Members £20 per year, visitors £4 per talk. Further details are available from Diana Power (01993 882301) or Robert Kyte at kyterobert@gmail.com and 01993 880368.

Angela Kyte

.....

Oxfordshire Artweeks

Oxfordshire Artweeks, the UK’s oldest and biggest open studios and pop-up exhibition event, returns to Oxfordshire this year for three weeks in May (3-26) to showcase the art of up to 2000 artists, including more than 200 who are new to the festival for 2025. Each week is different, and venues in North and West Oxfordshire will be welcoming you in from 18 May, and over the late May bank holiday weekend.



Here in Stonesfield, two art spaces invite you. Firstly Boot Barn Pottery on Boot Street where you can see one-off sculptural, handbuilt and wheel-thrown ceramic pieces by Hannelore Meinhold-Morgan who develops her own unique glazes to decorate her work. Her decorative and functional ceramics distinctively combine colour, form and texture. Hannelore is inspired by life's natural wonders and surprises. The second is Sarts Cottage on The Ridings where jewellery designer Claire Fyfe-Jackson will present a charming mixture of silver designer jewellery incorporating semi-precious stones, mixed media paintings and metal flower sculptures all inspired by nature and the Oxfordshire countryside.



Sarah Pulvertaft

Over in Charlbury, there are nine venues to explore along a short art trail including the stunning upstairs studio of glass artist Di Gold, exquisite embroidery and calligraphy by near-neighbours Sue Rangeley and Marion Coates, stone-carving with Emma Maiden, and kinetic jewellery in silver and gold by Sarah Pulvertaft. Don't miss the extraordinary dynamic 3D landscapes, woodland scenes and seascapes, created by

Cathryn Jeff using layers of painted acetate, which are on show in the church.



In Finstock, visit Julia Ogborne whose colourful and joyful paintings are largely based on the landscape, her intuitive and invigorating response to the power and beauty of nature, light and shadow, wonder and mystery.

Then head to Woodstock where the Oxfordshire Museum's Artweeks exhibition 'Michael Black, chisel, wood, stone' presents the work and legacy of the Oxfordshire sculptor best known for carving the Emperors' Heads outside Oxford's Sheldonian Theatre in the 1970s. Opposite, a large group of artists in the town church are presenting work in ceramics, collage and other media.

www.artweeks.org

Please use our new email addresses

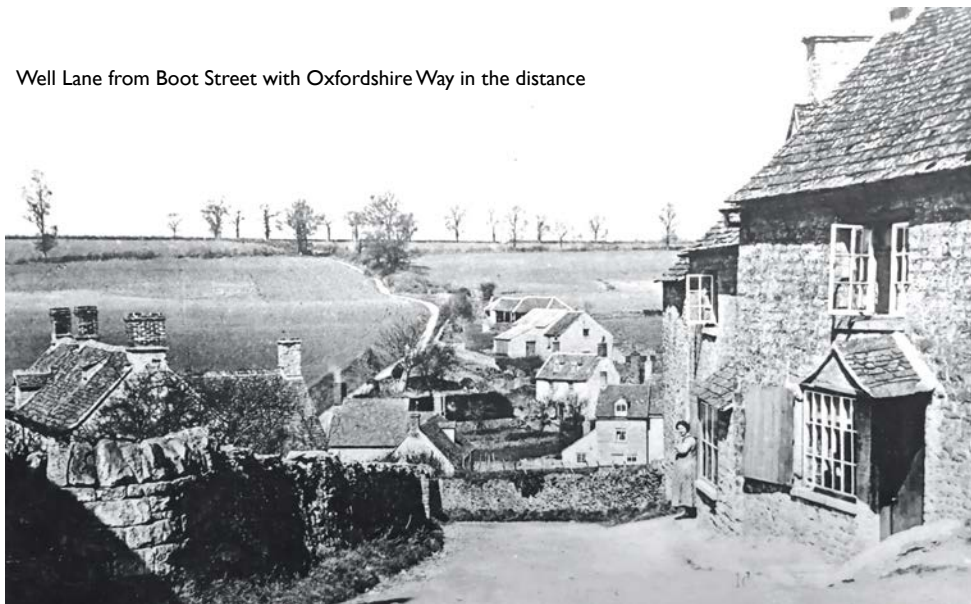
Articles: editor@stonesfieldslate.uk

Advertising and enquiries: publisher@stonesfieldslate.uk

Wagon on Pond Hill with The White Horse in distance



Well Lane from Boot Street with Oxfordshire Way in the distance



Please use our new email addresses

Articles: editor@stonesfieldslate.uk

Advertising and enquiries: publisher@stonesfieldslate.uk

Clubs, societies & sport

Stonesfield Football Club

Spring is in full bloom and things are looking good for both our teams. The month started off with a 'walk-over' for the Firsts away at Hanborough, when the home side couldn't raise a team. Our boys would have preferred to win the points on the pitch, but these things happen. Next up it was a tough game at home against RAF Brize Norton (it always is) with the spoils shared in a hard-fought game (1-1). Then Milton came visiting and our boys deservedly took all three points in a comfortable win (4-1). Next it was Aston, again at home, and although it was a frustrating game where our boys missed loads of chances, a Raffy Rice goal secured a narrow victory (1-0). Finally, they managed to get their shooting boots on against Chadlington with an easy win (5-0).

It's been a great month that sees our Firsts three points clear at the top of the league with five games to go and two games in hand over second-placed Hailey! I'm very quietly confident that this could be their year, but it all depends on how well they handle the pressure of being favourites and playing three games a week. We all wish them well in the remainder of their games.

Our Reserves continue to be involved in high-scoring matches in what continues to be a great season. An easy win away at

Milton (6-1) was followed by an unusual thumping of Eynsham away: unusual in that they kept a clean sheet (5-0)! Unfortunately, at Spartans they lost by the odd goal in another customary five goal-thriller (3-2). They then hosted Witney Royals in the first round of The Hughes Cup and sailed into the next round with a comfortable win (4-0). The icing on the cake for this month came in yet another five-goal thriller when high-flying Charlbury came calling and this time our boys put a big dent in their title aspirations, coming out on top by the odd goal (3-2). Ben Franklin's boys have one league game left and are likely to finish third in Division 3, which might just win them promotion. As ever, fingers crossed

The regular reader will be aware that Raffy Rice has been knocking on the Fredo Award door since he got back playing again just after Christmas and it gives me great pleasure to announce that his brilliant hat-trick in the 5-0 demolition of Chadlington makes him the winner this month. A Fredo in time for Easter is a fine reward for Raffy's long battle back from serious injury to scoring goals for fun in the Firsts! Every Fredo is special but this one, I'm sure, will be a very popular award.

Tom Flanigan (891979)

Please use our new email addresses

Articles: editor@stonesfieldslate.uk

Advertising and enquiries: publisher@stonesfieldslate.uk

Stonesfield Gardening Club

If it's April, the Stonesfield Gardening Club hold their annual plant sale and this year was no exception. Members had been sowing seeds, nurturing them, splitting perennials and taking cuttings – so that fellow keen gardeners in the village can buy some nice plants at a good price, and all without getting the car out. This also has the added benefit that all the money we raise is distributed to local good causes – a win-win!

This year we held the sale in the garden of The White Horse, so many thanks to Craig for allowing us to do so.

Our May meeting features a visit from Filipe Salbany, who is an environmentalist at Blenheim and will be talking to us about bees.

Happy gardening!

Diane Bates, Secretary

www.stonesfieldgardening.info

The Megalosaurus Society

Graham Rutson, one of the volunteers at the North Leigh Roman Villa, gave our April meeting a splendidly-researched and illustrated account of that villa and our own which was sited just off the Combe Road, but whose remains and fine mosaic were sadly destroyed by souvenir-hunters in the 18th Century. To complement Graham's talk, a group of diligent folk who had laboured to detect and identify Roman artefacts in our local fields brought along their finds so that members could see, touch and learn about them. It was altogether a great evening and our thanks go to Graham and all the detectorists and other finders, to Ann Lowe for her Roman-inspired artwork and Ray Sofroniou for her children's books.

Our May meeting will be a visit to Hook Norton to learn about the iron ore industry, and full details will come out to members early in the month.

If you wish to join the Society, or would like more information, please get in touch by emailing us at megsoc25@gmail.com.

Viv Kendall, Chair

megsoc25@gmail.com

STONESFIELD LUNCH CLUB

Stonesfield Lunch Club meets every Weds 11 till 2 (for members) at the St James' Centre.

Lunch Club provides a social occasion, friendship and support for our more mature residents along with refreshments, activities and a freshly cooked 2-course meal each week.

Volunteers are always welcomed for many roles and this is a lovely way to be involved in village life. Contact me if you would like more information on becoming a member or in volunteering.

Kate Harris 01993 898781 or kateharris58@yahoo.co.uk

Stonesfield Tennis Club

The Club was saddened by the recent passing of Club Chairman, Andrew Tacon. Andy was a regular tennis player and instrumental in organising the Wychwood League. In addition, he was always involved with the general administration of the Club and the maintenance of the courts. He will be missed by all.

The Club's Annual General Meeting will be held at 8pm Tuesday 6 May at Stonesfield Village Hall. Anyone who is interested in the Club is welcome to attend; however only current members are permitted to vote on any resolutions. We look forward to welcoming all and would be interested to hear from anyone who is interested in our activities and being part of our small, but vibrant club.

Coaching services will again be provided by Alex Dillon, an L3 qualified coach. Please see information on our website; however the ongoing sessions are as follows:

- Adult Improvers: Tue 1-2pm
- Red Ball Tennis (6-8 years): Tue 4-5pm.
- Orange Ball Tennis (8-10 years): Tue 5-6pm.
- Yellow Ball Tennis (11+ years): Tue 6-7pm
- Adult doubles hour: Tue 7-8pm

For coaching enquiries, please contact Alex on 07876 194008 or by email to alexandergjd@gmail.com.

Stonesfield Tennis Club

stonesfieldtc@gmail.com

www.clubspark.lta.org.uk/Stonesfield Tennis Club

facebook @stonesfieldtennisclub

instagram @stonesfieldtennis

Stonesfield Sports & Social Club

April has been another busy month - a huge thank you to all who have been supporting us.

May is going to be just as busy with the weather being nicer. The patios are in full use and the summer sports are starting.

We have darts back after a while without a team. Our footballers have done really well this season but they will be making way for the cricketers – let's hope the cricketers have just as good a season.

If you are coming up on Thursday nights, we recommend you use the side door as 'Aunt Sally' will be in full swing on the front patio.

The pool teams are on a break between seasons; both teams have had a good season with Stonesfield A's holding their own in the top league, and Stoney Blues opening up for new players. Please email stonesfield.social@gmail.com if you fancy joining.

The weekends are just as busy with events; do make sure you note the dates for the diary!

For full details, visit our website.

Stonesfield Sports & Social Club

www.stonesfieldsocial.com

Church news

Church of England Worship at St James the Great, Stonesfield

(Benefice of Stonesfield with Combe Longa)

www.stonesfieldparishchurch.org

Rector: Revd Ralph Williamson,
rector@scbenefice.org, 01993 891872

Churchwarden: Lindsey Sellar
stonesfield@stonesfieldparishchurch.org

St James' Centre bookings:
sjcsbookings@gmail.com

For any enquiries or help, including pastoral support, please do contact us.

From the Rector: New Life

In March I wrote about making a delayed New Year's resolution - to plant a flowerbed. It was a rash thing to commit to in print, as resolutions (and my own resolution) can so easily fail. As the weeks passed, endless winter colds, and all the other things which needed doing, made it seem less and less possible. But when two clear days appeared, I took the plunge, ordered a lorry load of soil and compost, and I got out my spade. Removing the turf on top of the stony ground and relocating it to another spot was the hardest part, and the tendons in my arm still hurt, but I persevered, and two days later a pristine (but empty) flowerbed, six metres long and a metre wide, was ready for planting. Days later I did the fun bit, burying things in the waiting soil. And after just a few weeks, new life is now appearing in the flowerbed.

Tentative shoots and tiny pairs of first leaves are breaking the surface, and elsewhere in the garden the rhubarb plant which I presumed to be dead has also decided to offer tiny crumpled leaves towards the light. I now have hope that quite soon I will see the multi-coloured flowering and fruiting of what was planted.

The church has just celebrated our great festival of Easter, and one of my favourite hymns is *Now the green blade riseth, from the buried grain*. The drama of new life in the spring accompanies our celebration of Christ's resurrection, and assures us that we are included in his death and eternal life. That which was buried in the cold ground emerges alive after the death of winter. Christ, laid in the tomb, is raised to eternal life which conquers death. And we, often cold and dark, lifeless or dry, are also kindled to new life by the love of God. This is the great miracle of transformation which takes place within the hearts and minds of those who come to know God's love for them in Jesus Christ. May the warmth of his love raise us, may the fullness of God's life fill us, and may the power of the resurrection flower and fruit in our lives, bringing joy, beauty and new life to us and to others.

Revd Ralph Williamson

Church services

Sunday 4 May [Easter 3]

8am	Stonesfield	Holy Communion [BCP/said]
9.30am	Combe	All Age Worship
11am	Stonesfield	All Age Worship

Sunday 11 May [Easter 4]

8am	Stonesfield	Holy Communion [BCP/said]
9.30am	Combe	Parish Communion
11am	Stonesfield	Parish Communion

Sunday 18 May [Easter 5]

8am	Stonesfield	Holy Communion [BCP/said]
9.30am	Combe	Parish Communion
11am	Stonesfield	Parish Communion
5pm	Combe	Evensong

Sunday 25 May [Easter 6]

8am	Stonesfield	Holy Communion [BCP/said]
9.30am	Combe	Parish Communion
11am	Stonesfield	Parish Communion

Wednesdays

9.30am	Stonesfield	Holy Communion (every week)
11am	Combe	Holy Communion (14th), Morning Prayer (28th)

Lindsey Sellar

Stonesfield Methodist Church

Services for May

Sunday 4	11am	Andrew Maisey
Sunday 11	11am	The Revd Charles Harris
Sunday 18	11am	The Revd Ian Worrall
Sunday 25	11am	The Revd Andrew Biggs
Holy Communion Service		

Welcome!

Let us build a house where love can dwell
and all can safely live,

a place where saints and children tell
how hearts learn to forgive.

Built of hopes and dreams and visions,
rock of faith and vault of grace;
here the love of Christ shall end
divisions:

All are welcome,

all are welcome,

all are welcome in this place.

Marty Haugen. StF 409

Come to a Service soon.

Kathleen Albért (891733)

Roman Catholic Worship

The Apostolic Succession

The doctrine of Apostolic Succession asserts that the authority and continuity of the Pope and Church are maintained through an unbroken line of bishops dating back to the apostles and Jesus. This concept is not only a matter of historical significance but also a theological cornerstone that ensures the legitimacy and unity of church leadership.

The origins of apostolic succession can be traced back to the early days of Christianity. According to tradition, the apostles, who were the original followers of Jesus, were given the authority to lead and teach by Christ himself. As the Church grew, the apostles appointed successors, known as bishops, to continue their mission. This practice was intended to preserve the teachings and authority of the Church, ensuring that future generations would remain faithful to the apostolic tradition.

The Apostolic Succession is closely linked to the sacrament of Holy Orders. It is believed that through the laying on of hands during the ordination ceremony, bishops receive the Holy Spirit, granting them the same spiritual authority as the apostles. This unbroken chain of ordination is seen as essential for the validity of the sacraments and the overall unity of the Church. The Pope, as the Bishop of Rome, is considered the direct successor of Saint Peter, who is regarded as the chief apostle.

The apostolic succession remains a vital aspect of the Church's identity and continuity. It serves as a link between the past and present, preserving the teachings

and authority of the apostles for future generations. Despite challenges and differing interpretations, the concept continues to play a crucial role in maintaining the unity and legitimacy of church leadership within Christianity.

Holy Mass

Sunday Mass 9.15am

Weekday Mass

Wednesdays 9.15am

Fridays 9.15am

For more information about Aid to the Church in Need's (ACN) 2025 Jubilee Pilgrimage to York, please contact Suze Mathews:

suzemathews899@btinternet.com

For Parish updates, more information and further support, please go to www.stteresaschurch-charlbury.com/ or contact Fr Clive Dytor, Parish Priest: fr.clive.dytor@rcaob.org.uk

Roman Catholic Community in Stonesfield

JUNIOR TAE KWON-DO

The Korean art of Self-Defence

Develop your children's self-confidence, concentration and help them to learn respect for themselves and others.

New lessons developed to be fun and informative for ages 5-17.

Stonesfield Village Hall

Mon and Thur: 5.30-6.30pm

****Come and try a complimentary session****

ITF registered international instructor
James Kumar CRB vetted

Further information, contact James
01865 772883 07788 583 965
Jameskumar@hotmail.co.uk

STONESFIELD GARDENING CLUB

We are a friendly, sociable club with a full programme of events (details on website). You can meet fellow members, listen to interesting and knowledgeable speakers talking about a wide variety of gardening topics and enjoy organised visits to various gardens.

Membership is open to anyone with an interest in gardening on payment of the **annual subscription (£10 per adult or £18 for a couple at the same address).**

All members receive a membership card entitling them, amongst other benefits, to discounts at local garden centres.

Visitors are welcome to attend a meeting for a fee of £4, deductible from membership if you join at the meeting.

More details at
www.stonesfieldgardening.info



Stonesfield Tennis Club

The club was established over 100 years ago with membership open to all at very competitive subscription rates.

The two astro-turf tennis courts were re-laid in 2018 and are in excellent condition with plenty of court availability.

Website:

[https://clubspark.lta.org.uk/
StonesfieldTennisClub](https://clubspark.lta.org.uk/StonesfieldTennisClub)

Email: stonesfieldtc@gmail.com
Facebook: [@stonesfieldtennisclub](https://www.facebook.com/stonesfieldtennisclub)
Instagram: [@stonesfieldtennis](https://www.instagram.com/stonesfieldtennis)

Lucy Martin Massage



[Lavender.end](https://www.instagram.com/lavender.end)



[Lavender End aromatherapy](https://www.facebook.com/lavenderend8)



lavenderend8@gmail.com



07552 653000

Paula's Garden Help

If you're in the local area of Stonesfield and would like help with the weeding, tidying and planting of your garden, I can help (£20 per hour).

Please contact me on 07970 517891
paulasgardenhelp@gmail.com



windrushgroup

print | design | web | large format

Celebrating our 50th anniversary, we have been delivering our print expertise to a wide variety of clients from the smallest personal project through to much larger organisations. We pride ourselves in delivering the same level of service for all.



01993 772197

Chris@windrushgroup.co.uk

www.windrushgroup.co.uk

Windrush Group, Windrush House, Avenue Two,
Station Lane, Witney, Oxfordshire OX28 4XW



Back or Joint Pain?

Pre or post operative rehabilitation?

Need to improve strength or fitness?

Feeling stiff and inflexible?

Address muscle imbalances, improve posture, develop your core and build fitness through individual Pilates sessions in our Stonesfield studio with reformers, tower, chair and more

Call Lucy on 07484901615 or email
info@resiliencepilates.co.uk



INK RIBBON PROGRAM
Post-Operative Workout Enhancing Recovery

COTSWOLD GARDEN DESIGNER



- Looking to improve your outside space but stuck for ideas on how to make the most of it?
- Want somewhere to entertain?
- A space for your children to play?
- Or maybe you just need a quiet place to relax, a calming, scented corner, just for you?



I can provide a full garden design, planting plans or a simple garden report - some ideas of how you could best use your outdoor space and the types of plants that you like and would suit the environment.

CONTACT LORRAINE:

lorraine@cotswoldgardendesigner.co.uk

07516262560

www.cotswoldgardendesigner.co.uk



best-one 

Suriya Express & Post Office

1 Pendle Court, Pond Hill, Stonesfield
Tel/Fax 01993 898379

Bread & Pastries
Fine range of Groceries
Fruit & Vegetables
Beers, Wines & Spirits
New range of Organic Products
Dry Cleaning

Opening hours:
Monday to Friday 7am–8pm
Saturday and Sunday 8am–8pm*
Bank Holidays 8am–8pm*

**P.O. closed on Sundays & on Bank Holidays*



All aspects of roof work undertaken

Slates • Tiles • Flat roofs
Chimneys • Valleys • Leadwork
Moss clearance
UPVC fascias • Soffits • Gutters
Advice and estimates free

Freephone
0800 955 5063

Mobile
07817 792194

WOODSTOCK TAXI SERVICE

07766 743081



TOWNHOUSE

● **EXECUTIVE TRAVEL** ●

- Airports & Stations
- Hospitals & Schools
- Theatres & Restaurants
- Day trips & tours
- Weddings & Proms
- Shopping trips

Our friendly team includes female drivers

www.townhousewoodstock.co.uk



The Organic Runner

100% organic cotton wear pre, post, during runs. Crafted with the environment and your well-being in mind. Run wild and naturally.

Once worn out return our items to be remade into new sustainable fashion, clothing that gives back making it infinitely recyclable.

www.theorganicrunner.co.uk

Are you a local business?

You could advertise your business here for less than £5 per month
Larger (or smaller) spaces also available

For details email

M J Fyson BA BA VetMB MRCVS
 The Coach House Veterinary Clinic Ltd
 Wroslyn Road
 Freeland
 Nr. Witney
 Oxon OX29 8AQ
 E-mail: coachhousevet@outlook.com



We are a traditional independent small animal Veterinary Clinic

- Opening hours: Mon-Fri 08:00-18:30, Sat 09:00-12:00
- Consultations by appointment only, please phone 01993 880551
- Friendly personal service for dogs, cats and small furries
- Stockists of Symply and Canagan pet foods
- Follow us on Facebook: Coach House Veterinary Clinic

01993 880551

www.coachhousevetclinic.co.uk



YOUR PERSONAL TRAVEL CONSULTANT Book the holiday you deserve

Tailor made Itineraries, Group Tours, Cruises,
 Honeymoons, City breaks, & Package Holidays

One-to-one Service

Avoid endless hours searching
 online or waiting for call
 centres. I'll find the ideal
 holiday for you, taking care of
 all the little details.

Expert Advice

Simply tell me what you're
 looking for in a holiday and I'll
 come back inspiring choices
 and expert advice, for the
 perfect trip that's tailored to
 your requirements.

Full Protection

You can book and relax, knowing your holiday is
 fully protected by ABTA and I'll be here throughout
 the journey if there is anything you need.

BOOK YOUR NEXT HOLIDAY TODAY

Sarah Heduan
 Website: hedgetravel.notjusttravel.com
 Email: sarah.heduan@notjusttravel.com
 Phone: 07747651697



Roberts Garden Machinery Ltd



- Professional servicing and repairs of most makes of garden machinery
- New & second-hand machinery supplied
- Collection & delivery by arrangement

18 years' experience with LAWNMOWER SALES & SERVICE

Open 8-5 Monday-Friday, 8-12 Saturday

Unit H5, New Yatt Business Centre, New Yatt, OX29 6TJ

Tel: 01993 881320 or email: robert.milloini@btinternet.com

JEM CHIMNEY SWEEPING

- NO FUSS •
 - NO MESS •
 - NO PROBLEM •
- Tel: 01865 772996

Are you a local business?

You could advertise your business here
 for £3 per month.

For details email

publisher@stonesfieldslate.uk

TBP.

THE BURNSIDE
PARTNERSHIP

Specialist Private Client Lawyers &
Tax professionals

Trusted advisors to individuals and their families

We are based in Combe, Oxfordshire, but also have offices in London and the Thames Valley.

We provide specialist advice on Wills, inheritance tax planning, probates, powers of attorney and generally protecting your assets. Our tax specialists are also here to help with your personal tax compliance.



We are always happy to offer a free initial chat.

For more information, please call our Combe office on 01865 987781, visit www.theburnsidepartnership.com or email anna.boucher@theburnsidepartnership.com



"The team is superbly put together, showing professionalism and personality in equal measure"
Legal 500, 2024

Oxford Electrical Installations Ltd



Stonesfield Based Family Business

**Test & Inspections • Landlord Certificates
Full & Partial Rewires • New Builds & Extensions
Fault Finding • Security Lighting
New Consumer Units • Additions & Alterations**

Call: 07766 252548 or 01993 222444

Email: quotes@oxelec.co.uk

Web: www.OxElec.co.uk





THAMES VALLEY TREE CARE LTD

Founded in Stonesfield.
Providing a professional, reliable and
innovative service in all aspects of tree
surgery and hedge management

FREE no obligation quote

Tel: 01993 891381
Mob: 07971018279
Email: info@tvtreecare.co.uk
www.tvtreecare.co.uk

DIRTY CARPETS, UPHOLSTERY, RUGS



Most carpets dry within the
hour
Unbeatable results, removes
almost all spots & stains
call
GRIMEBUSTERS

01993 868924 01865 726983
www.grimebusters.co.uk

Tracey Keeling



Personal Trainer

The Older Adult Training Specialist

Any age is the right age to exercise.
(Face to face or on-line)

07977 228756

www.hardenhealthandfitness.co.uk

A.L. SOLE & SON

FUNERAL DIRECTORS

Bidston Close · Over Norton · Chipping Norton · OX7 5JP
01608 644112
office@solefunerals.co.uk
www.solefunerals.co.uk



*Your local independent funeral director since 1948.
Providing a considerate and appropriate service
with a refreshingly normal approach.*

**24hr Service
*Private Chapel of Rest
Pre-paid Funeral Plans



Are you a local business?

You could advertise your
business here for less
than £10 per month

Larger (or smaller)
spaces also available

For details email
publisher@stonesfieldslate.uk

THE

Stonesfield Slate



OXAD

Stonesfield's new Architecture and Design Studio

- All planning applications
- Listed building consents
- Building Surveys
- Renovations, conversions and new build projects
- Full design packages from concept to construction

Need advice? We are happy to help, feel free to call us



Andrew A. Adams FCCA

Chartered Certified Accountant

Quality personal service for your
Accounting, Taxation and Business needs

Competitive fees agreed in advance

Free initial meeting

Telephone: 07790 854574

01993 891280

Email: aaadams@TalkTalk.net

PJR Plumbing & Heating

- * Installation
- * Maintenance
- * Repair & Service
- * Gas Appliances & Safety Certificates



Tel: 01993 881069

MOB: 07515 733398

onevillage.com

One place to go for interiors

Online & On the A44 in Woodstock

The social choice

WORKING WITH
CRAFTMAKERS' CO-OPS
IN ASIA & AFRICA
SINCE 1979



TOWN & COUNTRY
TREES LIMITED



A tree surgery company with
the integrity you can trust.

Tel: **0845 458 2980**

Mobile: **07976 261850**

Email: **info@townandcountrytrees.co.uk**

www.townandcountrytrees.co.uk

PELLMANS

Solicitors

- Residential Property, Conveyancing and Leases
- Wills/Probate/Trusts/Tax/Powers of Attorney- home visits available
- Commercial Property, Conveyancing and Leases/Business/Companies

01865 884400

www.pellmans.co.uk

1 Abbey Street, Eynsham, Witney, Oxfordshire OX29 4TB



Perfect Finish

Hand Ironing Service


- Fully Insured
- Collection & delivery
- Shirt ironing and hanging service
- Clothing, bedding and linen
- Based in Stonesfield

Contact Marie: 07969 685 479

perfectfinishironing@hotmail.com

www.perfectfinishironing.co.uk

We care, when it matters most.



An award-winning local family business
trusted by families for over 60 years
with a first class reputation for quality,
value and service.

“Invaluable support”
“Seamless arrangements”
“Nothing was too much”
“Sympathetic and professional”

Above are just some of the many touching
comments we have received about our service.

Learn more about us at

www.jerramsbrothers.co.uk or call us at any time.

Jerrams Brothers

Funerals Funeral planning Memorials Support Est. 1949

33 High Street Woodstock OX20 1TE 01993 811491
18 The Kidlington Centre, Kidlington OX5 2DL 01865 374444





Professional, local tree care

Removals, pruning, stump grinding and
hedge cutting

Insured and qualified

Chris Murphy FdSc (Arb) NdArb
07738 151880

chris@ashdowntreemanagement.co.uk
www.ashdowntreemanagement.co.uk



Maeve O'Donnell
Acupuncture

**Acupuncture for stress reduction, pain
relief, arthritis, migraine, fatigue,
hormone imbalance, and more.**

I am a registered nurse and have been
licensed to practice acupuncture for over
30 years. Appointments available at my
Stonesfield clinic or in your own home.

To find out more or arrange an initial
consultation please contact me on
07791 278618

maeve@maeveodonnellacupuncture.co.uk

www.maeveodonnellacupuncture.co.uk

RGN BSc Lic Ac AAC MBMAS



WILLS ~ PROBATE ~ POWERS OF ATTORNEY

INHERITANCE TAX PLANNING

Tel. 01993 811 792

Email info@woodstocklaw.co.uk

Woodstock Solicitors - 1st Floor - 32 New Road - Woodstock - OX20 1PB



Hypnotherapy

For help with anxiety, stress, pain control, insomnia, phobias, unwanted habits, confidence and self-esteem, exam and interview nerves.

Contact: Linda Flanigan
Clinical Hypnotherapist
GHR Registered & Member (Lic.) of National Council for Hypnotherapy

Tel: 07866 360359
Email: linda@lfhypnotherapy.co.uk
www.lfhypnotherapy.co.uk



WINDOW DESIGN INTERIORS

BLINDS, CURTAINS, FABRICS

Made to Measure
Curtains and Blinds

Fabric Showroom

Measurement and Fitting
Service

www.windowdesigninteriors.co.uk

01993 870606

Call us to make an appointment

Bed and Breakfast at Combe

For details
please view
www.greenclose.net
or call 01993 891223

MICHAEL PRICE & SON PLASTERING

58 Ticknell Piece Road
Charlbury, OX7 3TW

Tel 01608 811642
Mobile 07710 170049

Foot Health Professional

Joanna Attridge
MCFHP MAFHP

Foot problems?
I will visit you in
the comfort of
your own home



07961 620 292

joannafoothealth@gmail.com
www.joannasfoothealth.co.uk

Based in Combe
Fully qualified and insured

GEOFF BOOTH

Landscaping • Paving • Walling
Driveways • Fencing • Brickwork
Building maintenance
Garden maintenance
Free quotations

Mob: 07710 628248

Email: geoffboothlandscaping@hotmail.com

Enjoyable and friendly art classes

Drawing and painting
Still Life

For more information contact
gabrielekern31@gmail.com



PRICE LIST

1 BUILDERS BAG £90.00

2 BUILDERS BAGS £175.00

3 BUILDERS BAGS £250.00

PRICE INCLUDES VAT AND DELIVERY WITHIN
10 MILES OF LONG HANBOROUGH

☎01993 880 500

✉ info@bowards.co.uk

PROBLEM FEET ?!

NAIL CUTTING. CORNS. CALLOUS.
HARD/DRY SKIN. FOOT MASSAGE.

**TREATMENT IN THE COMFORT
OF YOUR OWN HOME!**

Sharon Davies MCFHP/MAFHP
01993 891132/ 07941843353

OVER 20 YEARS EXPERIENCE
**REGISTERED MEMBER OF THE
BRITISH ASSOCIATION OF FOOT
HEALTH PROFESSIONALS**

Rita Johnson

(was Hutchings)

Painter & Decorator

Internal & External.

Quality work.

Clean, efficient, friendly worker.

Contact me for free estimates.
01993 772078 or 07826 011560

A. K. P. DIXON

Home & Garden Maintenance
& General Handyman

For all those jobs you need doing
inside & outside – I'm your man!

Call Ade on 01993 813873
or 07825 631111

email: handymanade65@gmail.com

Sewing & Alterations

... to make that garment fit you!

Fittings, hem levels, and a varied range of
alteration and sewing work carried out.

Dresses, Skirts, Tops, Shirts, Jackets,
Trousers, Curtains, Cushions and beyond!

Louise Everett-Brown
lou.smiley1@gmail.com
01993 813873

D S JONES

BUILDING & ROOFING

All aspects of building, & roofing undertaken

For all enquiries call or email

07496149990



djsmaintenance@hotmail.com

Instagram: @dsjonesbuilding



**1 Cotswold Business Park.
Range Road, Witney.
Oxfordshire OX29 0YB.**

**Oxfordshire based company bringing great
local building services to your door...**

-  **Boiler service and repair.**
-  **Gas, Lpg, Oil, and Heat pumps.**
-  **Plumbing and heating services.**
-  **Repairs and installations.**
-  **Building renovations & maintenance.**
-  **New builds, extensions, repairs.**
-  **Electrical services.**
-  **Repairs and installations.**
-  **Solar panels & batteries.**



01993 771754



Info@gandoengineers.co.uk

www.gandoengineers.co.uk



DJR MILES

BATHROOM, PLUMBING & HEATING ENGINEERS LTD

www.djrmiles.co.uk

 BATHROOM & PLUMBING

 GAS & OIL HEATING SYSTEMS

 RENEWABLE HEATING SYSTEMS

t: 01993 891533 m: 07860 142230

e: [djrmpheltd@yahoo.co.uk](mailto:djrmbpheltd@yahoo.co.uk)



NOW OPEN

Pendle Court, Pond Hill, Stonesfield, OX29 8PZ

Brand New Fully Refurbished Salon

Experienced Stylist

Cutting, Styling & Colour Services

Modern & Traditional Colour Techniques

Colour Correction

Ladies & Gents

Open Tuesday-Saturday

Beauty Services Coming Soon in

New Private Treatment Room

Styling Chairs Available to Rent

Email for Further Details

hbh.salon@outlook.com

01993 870167



THE WHITE HORSE, STONESFIELD

COMMUNITY OWNED, OPEN TO EVERYONE

Monday-closed

Tuesday-5-11pm (drinks only)

Wednesday 11.30am-11pm, food 12-2.30, 6-9pm

Thursday 11.30am-11pm, food 12-2.30, 6-9pm

Friday 11.30am-11pm, food 12-2.30, 6-9pm

Saturday 10am-11.30pm, food, brunch 10-11.30am, Lunch 12-2.30, 6-9pm

Sunday 11.30-8pm, food 12-4pm

SATURDAY BRUNCH 10AM - 11.30AM

**WE CAN CATER FOR ALL, WHETHER IT'S WALKING OR CYCLING
GROUPS, TEAM MEETING OR JUST A COFFEE GET TOGETHER, LET
US KNOW YOUR REQUIREMENTS AND SEE WHAT WE CAN OFFER.**

**COFFEE & CAKES - LUNCH - DINNER - WALLED GARDEN
DOG FRIENDLY - LOCAL ALES - CAR PARK - QUIZ NIGHTS
SUNDAY ROASTS & MORE...**

MEAT SUPPLIED BY STEVE BETTS BUTCHERS

CONTACT - 01993 672059

WWW.THEWHITEHORSESTONESFIELD.COM

FACEBOOK - THE WHITE HORSE PUB STONESFIELD

THE WHITE HORSE, THE RIDINGS, STONESFIELD, OX29 8EA



- WHAT'S ON -

Experience a whole year of unforgettable memories in 2025

APRIL

Life Below Stairs A new experience	All Month
Stables Art Exhibition (By Cai Yuan)	All Month
Easter Eggstravaganza and Easter Weekend	5th - 21st April

MAY

Roof Top Tours A new experience	All Month
Jousting	3rd - 5th May
Dogs allowed in May	6th - 31st May
Blenheim 7k	18th May
Giffords Circus	22nd May - 2nd June
Blenheim Palace Food Festival	24th - 25th May
May Half Term - 'Pip and Posy' in Adventure Play	24th May - 1st June
Armchair talks (Stables Café)	27th May

JUNE

Blenheim Palace Triathlon	7th - 8th June
Nocturne Live	18th - 22nd June
Blenheim Palace Flower Show	27th - 29th



Find out
more
about
our
events.

Download
ARCHIE
YOUR INTERACTIVE GUIDE



With over
2000 stories
to make the
most of
your visit.



New tea towels!

See the full range at ablackbirdsang.com



20% STONESFIELD AND NEARBY VILLAGE DISCOUNT:
USE THIS CODE WHEN CHECKING OUT: STONESFIELD20
OR CALL GENNY AND TONY ON 01865 600926

