



Issue No 551 Oct 2024

Oh what a night!



Craig Tipper and Eric Strauss pulling pints

A huge thank you to everyone who came to celebrate the first anniversary of community ownership of The White Horse. The weather was perfect and your energy, laughter and support made the night truly unforgettable!

A special shout out to Craig, Barbara and their unflappable team who worked their socks off all night to feed and water us, often in the face of overwhelming demand - you were incredible! It's wonderful to see so many local faces in the team that Craig's putting together.



Celebrating 1st anniversary

Many of you may have also noticed Eric Strauss, one of our valued US investors, putting in an epic impromptu stint behind the garden bar. You may recall that Eric bought the whole pub a round last New Year, and it was a pleasure to finally meet him in person.

Continued on p5

Do you want to send in an article but have no email?

Just call the editor (see below) who can arrange to collect your handwritten copy.

Do you want to advertise?

An advertisement in *The Stonesfield Slate* starts from as little as **£3 per month**.

Please email **slate-ads@stonesfield.online**, or call the Publishers on 01993 898841, for full details of availability, sizes, requirements and cost. We can also help with design if required.

Any new advertisements, or changes to existing advertisements, should be emailed to **slate-ads@stonesfield.online** **by 10th of the month**.

All advertisements must be **paid for in advance**.

Disclaimer

The Stonesfield Slate is a village amenity, produced and distributed by volunteers. It cannot be held responsible for any of the views expressed in its pages nor does it endorse any of the products or services advertised.

Articles are solely the responsibility of the writers and their opinions do not necessarily accord with those of the editors or publishers.

Whilst we strive to ensure all information is correct, we are not responsible for anything that happens as a result of you using the information. If you find any errors or omissions then please contact the Publisher and we will endeavour to correct them.

Dates for your diary are always subject to change. Please check with event organisers.

The editor and the publishers reserve the right to edit, shorten or omit any article submitted.

Publishers

Diane & Paul Bates,
Waterloo Barn, Laughton Hill,
Stonesfield, OX29 8DY
(898841)
slate-pub@stonesfield.online

Editor for Nov issue

Viv Kendall
(891803)
slate@stonesfield.online

Copy:

Deadline for next issue 15 Oct

Please email copy to
slate@stonesfield.online
or contact the Editor by phone.

Editor

Viv Kendall
(891803)
slate@stonesfield.online

Printer

Windrush Press, Witney

©TheStonesfieldSlate 2024

Advertising:

Deadline for next issue 10 Oct

Advertisements to
slate-ads@stonesfield.online

Current and past copies of the *Slate* are available at www.stonesfield.online

Dates for your diary: October

1	North Leigh History Society	North Leigh Memorial Hall	7pm
1-31	Pictures @ The Pub	White Horse	pub hours
1,8,15,22,29	Seniors' Café	White Horse	3-4pm
1,8,15,22,29	Zumba	Village Hall	7-8pm
1,8,15,22,29	Strong Nation HIIT	Village Hall	8.15-9.15pm
2	Stonesfield Parish Council	Primary School	7pm
2,9,16,23,30	Gatehouse Pilates	Village Hall	9.30-10.30am
2,3,9,16,17	Hannah Bathe HIIT Class	Village Hall	7-7.45pm
2,9,16,23,30	Folk dancing	Village Hall	7.45-10pm
3,7,10,14,17	Taekwondo	Village Hall	5.30-6.30pm
4	Harvest Quiz Night	St James' Centre	6pm
4,11,18,25	Baby & Toddler Group	Village Hall	10-12pm
5	Stonesfield Local History Society	St James' Centre	10.30-11.30am
5	Village Idiots	Charlbury Cricket Ground	9pm
7,14,21,28	Monday Coffee	St James' Centre	10am-12 noon
8,22	Board games night	White Horse	7.30pm
10,17,24	Upholstery Class	Village Hall	9.30am – 12pm
11	Witney Music Society concert	Methodist Church Witney	7.30pm
12	Ladies' Breakfast	St James' Centre	9am
14	The Quiet Revolution	Combe WI Reading Room	7.30pm
14,28	Drama Club	Village Hall	8-9.30pm
15	COVID/Flu clinic Woodstock patients	Village Hall	2.30-4.15pm
15	White Horse Folk	White Horse	8pm
16	Gardening Club visit	Harcourt Arboretum	11am
18	Combe Community Cinema	The Hub, Combe	7.30 for 8pm
20	Woodcraft/Autumn market	Combe Mill	10.30am-5pm
21,24,28,31	Taekwondo	Village Hall	5.30-6.30pm
23,24,30,31	Hannah Bathe HIIT Class	Village Hall	7-7.45pm
25	Village Hall Committee AGM	Village Hall	6.45pm
26	Christmas Shoe Box Appeal	Methodist Church	2-4pm
26	Race Night	SSSC	7.30pm
November			
1	Halloween Party with Sunfly	SSSC	time tbc
2	Soldiers of Oxfordshire - Family Day	Woodstock museum	12noon-5pm

Notices & news

Macmillan Coffee Morning – Reminder

It's time for another Macmillan Coffee Morning, and everyone's invited!

Please come along to support our annual community Coffee Morning for Macmillan Cancer Support, at St James' Centre, on Friday 27 September, 9 – 11am. There will be delicious cake, tea, coffee, a bottle stall raffle and plenty of good company! If you would like to donate a bake or a bottle, please contact Jane O'Gorman on janeogorman9@icloud.com or stop by at Wellswood, Churchfields.

We look forward to seeing you!

COVID and flu vaccinations in Stonesfield for Woodstock Surgery patients

The Woodstock Surgery is holding a vaccination session at Stonesfield Village Hall on Tuesday 15 October between 2.30 – 4.15pm. Eligible patients registered with Woodstock Surgery will be invited by text message. If you have a mobile number, please use the link in the text message, or phone the Surgery on 01993 811452.

To be eligible for a COVID booster this autumn, you need to be either aged 65 years and over, or aged between 18 and 64 years and in a clinical risk group.

To be eligible for a flu vaccination this autumn, you need to be one of the following:

- Aged 65 years or older
 - Have certain long-term health conditions
 - Pregnant
 - The main carer for an older or disabled person, or receive a carer's allowance
 - Living with someone who has a weakened immune system.
-

The Village Idiots!



At 9pm Saturday 5 October in Charlbury, the band is headlining Charlbury Oktoberfest (at the cricket ground). This will be the last chance to see The Village Idiots this year, and it's going to be one huge party!

Doors open 3pm with some great acts playing, including the fantastic Jubilee Brass Oompah Band. So do come along and enjoy the authentic Oktoberfest atmosphere! Cheers!

The Village Idiots

Oh what a night! (From p1)



Village Idiots entertain the crowd

The ever-popular Village Idiots kept us dancing and singing, and we couldn't have asked for better entertainment. During a break in their music, it was a honour to be presented with the runners-up certificate for CAMRA's Pub Saving Award, presented by Lynne Baldwin, their Oxfordshire Area Organiser.



Lynne Baldwin and Steve Callaghan

Finally, to our wonderful shareholders, committee members, and everyone who attended the celebration - this event wouldn't have been possible without YOU. Thank you for your continued support, your belief in The White Horse, and for making our community pub such a special place. Here's to many more years together!

Steve Callaghan

Chair, Stonesfield Community Pub Ltd

steve@backthewhitehorse.com

Pictures @ The Pub...

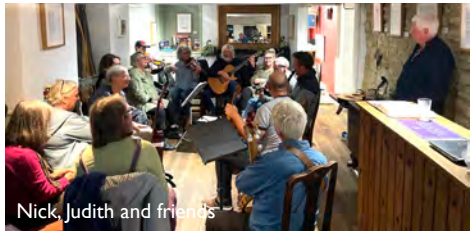
The current exhibition of work by Chris Davies, Diana Parker Letchford, Juliet Taylor and Trisha Williams continues until mid-month. From mid-October through November, we will be exhibiting work by Claire Brooks (landscape photography), Kerry Burniston (multi-discipline) and Robin Letchford (watercolours and prints).

Throughout December and into early January we are planning a Midwinter Show, much along the lines of Artweeks, during which local artists can offer a changing variety of wall art including smaller pieces, prints and multiples. If any Stonesfield artists who are not already 'on the radar' would like to participate, please get in touch, by the end of October.

Trisha Williams for Pictures @ The Pub
triywynwil003@gmail.com

Claire Renshaw for The White Horse

White Horse folk returns



Nick, Judith and friends

Tuesday 17 September was another fantastic evening at the White Horse with the return of Folk Night.

Over a dozen singers and musicians from Stonesfield (and elsewhere) entertained the audience for over 2 hours.

If you missed it then please come to the next one on Tuesday 15 October (or third Tuesday of each month) It starts at 8pm.

White Horse Arts



Our first arts and crafts event took place in the pub garden on Saturday 14 September. This had been several months in the planning and stress levels were high in the final run-up to the event, not least because the storm a few days beforehand almost blew the marquee to Witney! However, our daily sun dance did the trick and we had a glorious day of sunshine.



A great variety of work was on offer including stone-carving, painting on slate, jewellery, ceramics, papercraft, decorated boxes, animal art, sculpture, collage, paintings and prints, homewares, recycled metal decorations, journals and sketchbooks, mixed media works, books and music.

Craig and Barbara ensured that barbeque food was available throughout the day and Nick Hooper was generous enough to treat us to some splendid solo performances on

guitar. It was a most enjoyable afternoon with a lovely atmosphere, a great sense of community spirit and lots of happy people!



A big thank you to everyone who helped in some way to make the event such a success.

Trisha Williams for Pictures @ The Pub
triywynwil003@gmail.com

Claire Renshaw for The White Horse

Board Games Night at The White Horse

This will be at 7.30pm, every second Tuesday of the month... so on the 8 and 22 October. Bring your favourite game, or play the ones supplied; come with friends or join in with others. All ages are welcome, from 10 to 100!

Claire Renshaw

rennie@backthewhitehorse.com



THE WHITE HORSE, STONESFIELD

COMMUNITY OWNED, OPEN TO EVERYONE

Monday-closed

Tuesday-5-11pm (drinks only)

Wednesday 11.30am-11pm, food 12-2.30, 6-9pm

Thursday 11.30am-11pm, food 12-2.30, 6-9pm

Friday-11.30am-11pm, food 12-2.30, 6-9pm

Saturday 10am-11.30pm, food, brunch 10-11.30am, Lunch 12-2.30, 6-9pm

Sunday 11.30-8pm, food 12-4pm

SATURDAY BRUNCH 10AM - 11.30AM

**WE CAN CATER FOR ALL, WHETHER IT'S WALKING OR CYCLING
GROUPS, TEAM MEETING OR JUST A COFFEE GET TOGETHER, LET
US KNOW YOUR REQUIREMENTS AND SEE WHAT WE CAN OFFER.**

COFFEE & CAKES - LUNCH - DINNER - WALLED GARDEN
DOG FRIENDLY - LOCAL ALES - CAR PARK - QUIZ NIGHTS
SUNDAY ROASTS & MORE...

MEAT SUPPLIED BY STEVE BETTS BUTCHERS

CONTACT - 01993 672059

WWW.THEWHITEHORSESTONESFIELD.COM

FACEBOOK - THE WHITE HORSE PUB STONESFIELD

THE WHITE HORSE, THE RIDINGS, STONESFIELD, OX29 8EA



Village Hall news

Back to a busy start after the summer months, so a big thank you to all of you who support all our amazing clubs and events.

We are excitedly already preparing a number of things moving toward the festive period, including the return of our popular Christmas Market on Sunday 1 December, with wreath making the following weekend. Keep an eye out for posters and information over the next few months.

The Woodstock Surgery is running the COVID / Flu Clinic on Tuesday 15 October from 2.30 – 4.15pm. If you are eligible, and want to save a trip into Woodstock, and finding a place to park, please make sure that you prebook your flu jab via the normal surgery number so that you can be on the list when they visit the hall.

There has been a delay with the return of the weekly Seniors Café and Stonesfield Social on Tuesdays, as they are struggling with volunteers to help run them at the moment. We would love to see these return to their regular slot, but that can't happen without the people to support the cause, to give some of their time to plan the meals around the food available that week, and to prepare and cook. If you would be interested in helping, please do get in contact. Without a few more volunteers the most likely scenario will be that the Social will be once a month, with the additional service of prepped freezer meals. The Seniors Café will be moved to The White Horse and run on a Tuesday. See article on p23 for further information.

Taekwondo on Monday and Thursdays are taking on new students! If you would like

your child to develop better listening skills, follow instructions and discipline, martial arts are a great place to start. It will also help develop confidence, dedication, routine and fitness. It is a wonderful all-round exercise and a great way to burn off energy, so if you think your child would like to give it a try, please contact James Kumar for more information on jameskumar@hotmail.co.uk, or give him a call on 07788 583965.

This is the second notification for the AGM for the Village Hall Committee that will be on Monday, 25 November at 6.45pm. We have a lovely committee, full of ideas to improve the hall and add to our list of activities, so if you are interested in the community, there is still time for you to get involved and join us. It's only four meetings a year, so requires very little commitment, and we love what new people can bring to our group – all are welcome, so please do get in touch.

As always, there is still room available if you want to start a weekly group, or a new activity, so please do get in touch and we will try to accommodate you.

Jacqueline Carthew (898919)

Bookings Clerk for Stonesfield Village Hall
stonesfieldvh@gmail.com

Stonesfield Sports and Social Club

Thanks to our members it's been a fantastic summer, but it's that time of year where we say goodbye to the cricket whites and aunt sally sticks and hello to the football boots! This also means the return of Ben's bacon buns on Saturday mornings, to enjoy while cheering on the budding football stars.

Men's football started on 14 September with our 1st team away to Heyford Athletic and our reserves away to Ducklington Reserves. Our first home game was on 28 September, with our reserves hosting Eynsham SSC Reserves.

If you are looking for something warmer, we also have Tuesday dominoes and Wednesday quiz nights – please check the dates, as they are on alternate weeks. Both of the pool teams are going strong on Monday nights and we have had interest in starting the darts team again, so please pop in and let us know if you are interested in playing and joining.

We are planning some refurbishments and decoration over the winter as well as new solar panels, in our strive to reduce our carbon footprint.

We have a number of events and bands over the next few months; the dates are always listed on the Dates for your Diary page of the *Slate*. We also have Sky TV and our large screen showing live sport; all of these are advertised on our Facebook page.

On 30 September we will be moving to our winter hours:

Monday-Thursday:	5-11:30pm
Friday:	4-11:30pm
Saturday:	12-11:30pm
Sunday:	12-8pm

As of 21 September, our Deputy Manager Sam will be assuming the role of Manager; Ben will be reducing his hours and assuming the role of Deputy Manager. We don't anticipate Members will see any impact and we know they will support our brilliant staff team during the transition.

The SSSC Committee

Charity Bike Day, July 2024

We would like to say thank you to everyone who turned up to support this event. We clashed with other events on this day but were still able to raise a total of just short of £700, and to send donations of £250 to each of our 2 main charities as well as smaller donations to several other local charities including the Playing Field, Chrissie's Owls and Stonesfield Primary School.

We would like to express a huge thank you to Sam and her team at Stonesfield Social Club for all their hard work keeping us fed and watered, and to the bands that stepped in at the last minute to keep us entertained.

Lastly – put us in your diaries for next year's event on Saturday 13 September 2025!

The Committee: Andy Gillam, Fred Dore, Roger Evins & George Williams

New local history society is nearly ready to start...

Last month's *Slate* mentioned a new local history society for Stonesfield. We're ready to start things moving and if you're interested, we would like to invite you to coffee and a short, introductory discussion (only one hour). It will be at

St James' Centre
Saturday 5 October
10.30 - 11.30

We have lots to tell you already, including a special event for our members in November, and plenty of ideas for the Society. But we want your ideas too, especially about any particular interests you have – archaeology, social history, local industries of the past, Romans, prehistory, the mediaeval village, fossils, landscape development, geology, local families...

Do come along (and it would help if you could give us a ring beforehand to say you're coming).

Viv Kendall (891803)
Trisha Williams (891960)

Ladies' Breakfast

Our next Ladies' Breakfast is going to be held on Saturday 12 October at 9am in the St. James' Centre and our speaker is Amanda Ford from Combe. Do come and join us for a delicious breakfast, followed by a short talk from Amanda; the cost is £5. If you would like to find out more, please get in touch with Bina (891293), Kathleen (891733), Muriel (891479) or Suzy (891552).

Have you or your family
VISITED the
MUSEUM
before 1990?



Megalosaurus has been an icon of the Museum of Natural History since the 1800s. To mark 200 years since OUMNH's *Megalosaurus* became the first named dinosaur, we are taking a look back at the different ways that the *Megalosaurus* fossils have been displayed at the Museum.

If you have access to any photos taken inside the Museum before 1990, we would love you to share them with us! Just scan or snap an image of your photo and email library@oum.ox.ac.uk, or drop off the photo at the Front Desk. We won't ask you to donate your images but may request permission to use and/or store a digital copy, if appropriate.

Closing date for submissions is 30 November 2024



Any hard copies of photos will be available for collection in person from 13 January 2025. Unfortunately, we are unable to post any photos back to you. OUMNH does not assume copyright permission for use of any images sent to us. If a photograph is of particular interest, the OUMNH will contact you to request permission to use/or store the image/s. No financial reward is offered. The OUMNH does not assume responsibility for physical photographs left at the front desk, however, you may request that we digitise them for you in your presence by appointment, if booked in advance.

Library@oum.ox.ac.uk

www.oumnh.ox.ac.uk



Harvest Quiz Night

Are you ready for a challenge, fun and good company? Come and join in the Harvest Quiz Night on Friday 4 October at 6pm – bring your family, friends, or come on your own to St James' Centre. Everyone is very welcome. Buffet supper is at half time – all free of charge.

It would be helpful to have an indication of numbers, so if you know you would like to come, please contact me.

Lindsey Sellar (898757)

Churchwarden
stonesfield@stonesfieldparishchurch.org

Stonesfield Players: Two Vegetables & A Missed Cue

Or more correctly titled *Peas, Carrot & Late Entry!* Three one act comedies by David Tristram which we will be performing at the Village Hall on November 21, 22 & 23.

Will disco-dancing Daisy & celebrity lookalike Gerry hit it off face to face after meeting online? Can managing director Peter persuade the company union rep of the need to modernise if he offers the right incentive? And will actress, Sarah, win that coveted prize at the drama competition?

Tickets on sale soon. For more information contact rebeccasj@btinternet.com.

Becki Johnson

North Leigh History Society

At our October 1st meeting Dr Simon Townley will be talking about the research on Chipping Norton recently completed by the Victoria County History (now British history online) and on Tuesday 5 November we are learning more about the Vikings with Professor David Griffiths. Do come and join us!

We meet on the first Tuesday of the month in North Leigh Memorial Hall, OX29 6SA at 7.30 (doors open at 7pm). All welcome. Members £20 per year, visitors £4 per talk.

Further details are available from Diana Power (01993 882301) or Robert Kyte at kyterobert@gmail.com and 01993 880368.

Witney Music Society

The 2024-25 series of Witney Music Society concerts starts in October. The opening concert of the new season will be given by the Fibonacci Quartet, performing works for string quartet by Mozart, Schulhoff and Schubert.

The concert is at 7.30pm on Friday 11 October at High Street Methodist Church, Witney. Tickets (£18, £1 for under 19s) will be available at the door from 7pm or in advance online.

Details of all the Witney Music Society concerts are on its website and in the new brochure, obtainable via the website or from the library and other locations throughout Witney.

For more information, please telephone 01993 898020 or visit www.witneymusicsociety.org.uk.

19 October 2024
Asthall Manor, Ashball, Banford, OX18 4HW 14.00 - 18.00

NATURE RIGHTS

Truly inspiring and brilliant. Thank you!
A crucial timely event that anyone concerned with life on earth should attend.
An exceptional deep dive into an understanding of nature rights.

Can you imagine a future where Nature has rights? What's your part in this future? Join us as we unravel the story of humans' relationship with Nature: from ancient times to the present day, be part of a compelling journey where we watch, read, question, talk, listen... and imagine a future where Nature has rights.

Tickets <https://buytickets.at/gregoryandkoffman/1318658> Price €95 €65 £35

[@gregoryandkoffman](https://www.instagram.com/gregoryandkoffman) www.gregoryandkoffman.com

Cows on the Common



Cows with calves will be grazing on the Common from October until the New Year. The Common is an area of unimproved limestone grassland, and is a Site of Special Scientific Interest (SSSI). It has been created over many years of grazing, resulting in the rich flora and fauna that we see today.

Stonesfield Parish Council is responsible for managing the Common, working within guidelines set by Natural England to protect and improve this environmentally sensitive area, for both the wildlife and visitors.

Cattle are one of the best ways of maintaining the grassland and improving the Common. When cattle are allowed to graze freely, they select different plants, and even different parts of the plant, to nibble or browse. Over time, this selective eating by the animals creates a varied structure within the plants and the habitat. It is this that helps create the right conditions for a wide range of plants, insects, birds, reptiles and mammals to exist.



Enjoy the countryside responsibly (Information from the National Farmers Union)

- Cows are nosy and may come to investigate, especially if you have a dog with you.
- Don't panic or run if cattle follow you – stay calm and walk quickly and quietly around the herd.
- Remember cows can be protective of their young. Never get between cows and their calves – go around the herd and rejoin the path as soon as possible.
- Keep your dogs close, under control, in sight and on a short lead around cattle.
- If you are threatened by cattle release your dog so you can both get to safety separately.
- Dog poo can spread disease to cattle. Bag it and bin it – there's a waste bin by the road gate.

If you aren't comfortable walking where there are cattle, there are many other footpaths nearby.

Thank you for controlling your dog while there are cattle on the Common and for ensuring the gates are closed.

For more information contact:
clerk@stonesfieldpc.uk.

Richard Morris

Combe Community Cinema: *Hit the Road*

Hit The Road (subtitled) will be shown at the Combe Community Cinema, The Hub, Park Road, Combe on Friday 18 October. The Hub is at the former Methodist church, next to the playing field.

Hit the Road was directed by Panah Panahi, the son of Jafar Panahi, who has (so far) been arrested and imprisoned twice in Tehran. But far from being a mournful polemic, it is a very funny family drama, with delightful performances from its actors.

Doors and bar open 7.30pm, screening at 8.00 pm. Tickets are £5 on the door.

Combe Mill: Wood Turners and Autumn Market

For our 'In Steam' event on 20 October we have invited Wood Turners Clubs along with vintage demonstrations, spoon carving, a pole lathe and much more. The Autumn Market stalls will have lots to browse, so come along and meet our regular stall holders.

Combe Mill is a late 19th Century restored water mill by the river Evenlode, on Blenheim Palace Estate. All machinery will be running 'In Steam' and volunteers will be on hand to explain them. You can also visit the blacksmiths working in the forge.

The tea room will be open, also a BBQ, gift shop and tombola. Dogs on leads are most welcome. Adults £9.00, seniors £7.50, accompanied children FREE. Open 10.30am to 5.00pm.

Combe Mill

Blenheim Palace Sawmills, Combe OX29 8ET

Combe Women's Institute

It was lovely to welcome our members back, and to welcome one new member, after the summer break. The evening flew by: not only was the talk by Analiza Jones about handwoven bags from the Philippines entertaining and interesting, but being given the chance of some retail therapy was an offer that many of us just couldn't refuse.

At our 14 October meeting Martin Conway, who many of you will know from the village, will be speaking about 'The Quiet Revolution – women's lives in Britain since 1945'. If you're interested, please come and join us for the evening.

Meetings are held on the second Monday of each month in the Reading Room, from 7.30 - 9.30pm. Membership is open to all women over the age of 18 years. Subscription until the end of the March 2025 is now just £24.00. Guests are charged £5 per meeting (max 3 meetings a year as a guest).

Please call or email me if you would like further information about the WI.

Julia Sharpe (891058)

Secretary Combe WI

combewi@oxfordshirewi.co.uk

First World War Family Day



On Saturday 2 November the Soldiers of Oxfordshire Museum, Woodstock will host a First World War-themed family day from 12pm to 5pm. This year, 2024 marks 110 years since the outbreak of the Great War, and the county military museum also celebrates 10 years since it first opened.

First World War activities will be open to all the family, with an illustration workshop focused on wartime animals, and an opportunity to make your own 'Princess Mary' tin, like those given to soldiers from Christmas 1914.

The museum's galleries will be open alongside a range of WW1 living history displays to help immerse visitors in the period. The Great War Society, Britain's longest-running First World War living history group, will portray soldiers from the county regiment (The Oxfordshire & Buckinghamshire Light Infantry) throughout different stages of the conflict.

Those dropping in will also see interpretations of French soldiers from

Volontaires Etrangers, offering a different perspective on the 'War to End All Wars'. The museum's permanent displays cover some of the many different fronts on which the war was fought, from the western front to Mesopotamia (now Iraq), while a re-created trench dugout offers visitors a chance to walk through history, with equipment and clothing for families to handle and even try on.



Those with a family story from the First World War and objects to share will find museum staff and volunteers on hand to discuss these and accept donations to the museum's collections, preserving Oxfordshire's military heritage for future generations. The museum is particularly interested in objects from the First World War with a person or story associated with them that ties to the county itself, or one of the county's regiments: The Oxfordshire & Buckinghamshire Light Infantry or Oxfordshire Yeomanry.



Have your say on women's health services in Oxfordshire!

Healthwatch Oxfordshire would like to hear about your experiences of getting help for women's health issues, such as perimenopause, periods or cervical screening, as well as your experiences of health services more generally.

- What works well and what could be better?
- Is there anything that makes it difficult to get the help you need?
- What ideas do you have for how women's health services could be better?

Please share your experiences and views by completing an anonymous online survey at www.smartsurvey.co.uk/s/womenshealthservices/.

The survey will be open until 31st October.

Healthwatch Oxfordshire is an independent charity for people who use health and social care services. It finds out what matters to local people and makes sure their views are heard by the people who make decisions about those services. It will use your feedback about women's health services to help shape, support and improve services.

If you would rather talk to someone about your experience, or would like a paper copy or translated survey, please contact Healthwatch Oxfordshire on 01865 520520 or at hello@healthwatchoxfordshire.co.uk.

Pension Credit

Are you eligible for Pension Credit?

It is estimated that about 800,000 people over the state pension age who are eligible for this pension top up are not claiming it.

If you'd like to find out if this applies to you, phone 0800 99 1234 or go online at www.gov.uk/pension-credit.

STONESFIELD VOLUNTARY TRANSPORT SCHEME

Our volunteer drivers are available to take you to local medical appointments or to the hospitals in Oxford and Banbury.

We make no charge but welcome a donation towards expenses.
COVID safety precautions are still in place, if you need them.

**Please call or email to book transport in October:
Viv Kendall 01993 891803 or stonesfieldvts@gmail.com**

Politics & local affairs

Stonesfield Parish Council

Decided at the meeting held on Wednesday 4 September:

Chair & Vice Chair: Ursula Rice was elected as Chair, and Claire Renshaw as Vice Chair, for the remainder of the municipal year (to May 2025).

Councillor Resignations: Phil McArdle and Mick Heduan resigned as Councillors. The Parish Council wishes to thank them for their time and contributions to the Council; they will be greatly missed. Applications and questions regarding the two vacancies can be sent to rfo@stonesfieldpc.uk.

Common: Thirteen cattle will be returning to the Common toward the end of September / beginning of October, so please be mindful to keep dogs on leads.

War Memorial: The railings will hopefully be repainted in time for Remembrance Sunday, keeping in mind the Gardening Club's planting timing.

Planning: Councillors discussed application 24/02094/HHD - Orchard Lea, The Ridings, single story rear extension and had no objections.

Neighbourhood Plan: Councillors are hoping to receive the final draft plan in December. They have agreed to review it and make comments back to the Steering Group by January, in time for February's Council meeting, where it will hopefully be approved.

Date of next Council Meeting:

Wednesday 2 October at 7pm, in Stonesfield Primary School.

Cherie Carruthers

Locum Clerk and RFO, Stonesfield Parish Council

rfo@stonesfieldpc.uk

From our District Councillor

Proposed reforms to the National Planning Policy Framework

The consultation process is underway, with a deadline of 24 September. The aim of the changes is to achieve sustainable growth in the planning system, to deliver the Government's commitments to achieve economic growth and build 1.5 million new homes. At WODC, the planning team and members have been drafting a full response, and we have taken the opportunity to suggest a raft of beneficial changes that might be made to safeguard our natural environment, as well as siting housing where it is needed with the infrastructure to support communities properly. If you wish to participate in the consultation, then you can do so, as an individual or member of an organisation, at www.consult.communities.gov.uk/planning/planning-reform/.

Woodstock and Surrounding Areas Local cycling and walking infrastructure plans (LCWIP)

The steering group meeting on Monday 23 September with OCC officers and stakeholders will give OCC the opportunity

to provide a further, more comprehensive update and timeline, and also, provide a platform for input, guidance and feedback from key stakeholders. The ambition is to make walking and cycling the natural choices for shorter journeys or as part of a longer journey.

The geographical scope is: Woodstock Town (including the existing built-up area and approved residential developments), Bladon, Blenheim, Hanborough, Combe, Stonesfield, Fawler, Wootton, Glympton, Tackley and Begbroke.

NB Kidlington is covered by its own LCWIP.

The initial identification and audits of cycling routes were carried out by officers and members of the Village Travel Network (VTN) last year. This information is being collated, reviewed, and mapped to understand the network flows. Key outputs will include a network map and a list of infrastructure improvements. This is due to be completed by September alongside the network planning for walking.

Following the steering group meeting, the infrastructure improvements list, for both walking and cycling, will be prioritised/ranked and the LCWIP will document how it will be used in local planning, including Local Plan preparation and assessing planning applications and transport policy/strategy.

Genny Early
genny.early@westoxon.gov.uk

More news from West Oxfordshire

EV charging points

West Oxfordshire District Council has installed new charging points for electric vehicles at the Council-owned Woolgate car park. This is part of its scheme to provide more charging points throughout the district – there are now 42 charging units in 74 charging bays. The 12 new charging bays, at the north end of the Woolgate car park, will be a mixture of 7.4kW Type 2 chargers and 75kW rapid chargers.

Do you use Witney open-air market?

Or Chipping Norton market? If you use and value these markets you have the chance to help shape them for the future. The District Council is developing ideas to boost the weekly open-air markets and possibly to develop a complementary themed market in Witney's Mariott's Walk.

To take part in the Council's survey on this, please go to www.yourvoice.westoxon.gov.uk/en-GB/projects/west-oxfordshire-markets. Your responses will help understand how to serve the community better and make the markets an even more enjoyable place to visit.

Environment partnership projects

A new funding partnership between West Oxfordshire District Council, Wild Oxfordshire, Wychwood Forest Trust and the Low Carbon Trust will help these organisations tackle local habitat loss and fragmentation, climate change and pollution in line with the Council's priorities. The aim is to protect the county's rich biodiversity and to reduce the

impact of accelerated housing growth, increased traffic, hedgerow removal and river pollution.

Projects to be supported include Wild Oxfordshire's work in the Evenlode Catchment Partnership, which is working to improve natural flood management, water quality and wetland creation, including wider public engagement in citizen science. The Wychwood Forest Trust will work on protecting the Windrush in Witney, and to expand the Gibbets Close Hill reserve. Wild Oxfordshire will support local communities towards increasing the number of green spaces being managed for nature. And the Low Carbon Hub will receive funding to support a community action plan for zero-carbon energy in the Cuckoo Lane area – the first of its kind in the UK.

Community Grants

Calling Oxfordshire grass roots organisations - applications are now open for this year's community grants programme.

Does your group help people to live well and independently in your community?

Could you do with some extra funds to make your organisation even stronger and help more people?

One of our community funds could be for you!

Option 1 - our connected communities fund offers groups quick access to grants of up to £5,000 and is administered by Oxfordshire Community and Voluntary Action and Community First Oxfordshire.

Option 2 - looking to significantly increase your reach? Our community

capacity grants could be for you. Oxfordshire Community Foundation administers the fund and will consider applications from organisations looking for £5,000 to £20,000.

You can only apply for one fund, so have a think about which might be most suitable.

Due to the sizeable sums of money involved in the community capacity grants scheme and the high number of applicants, requests are subject to an assessment panel and generally have a lower chance of receiving funding compared to the connected communities fund.

More info about the funds, including application links, can be found on our newspages: www.lnkd.in/e3-Srmih.

Andy Graham
Oxfordshire County Councillor
Andy.Graham@Oxfordshire.gov.uk

Our MP

Starting in the November Slate, it is hoped that our new MP, Calum Miller, will be contributing an update of relevant Parliamentary affairs four times a year.

Thames Valley Police

Herbert Protocol

People with dementia do sometimes get lost and go missing. If you care for someone with dementia, you can fill in a 'Herbert Protocol' form which can be found on the Thames Valley website, containing information to give to the police if the person goes missing. This means you don't have to remember the information when you are under stress if someone goes

missing. And it saves time, so the police can start the search sooner.

The protocol is named after a war veteran of the Normandy landings named George Herbert, who lived with dementia in a care home. Mr Herbert went missing and sadly died while searching for his childhood home. You can fill in the form on your computer or print it out and fill it in by hand. Keep it somewhere safe where you can easily find it if the person goes missing, and you could give a copy to friends, family and neighbours. You only need to give the form to police if the person goes missing.

You can find the form by searching for Thames Valley Herbert Protocol form.

Thefts from cars

There have been a number of thefts from local cars recently, particularly in or near Charlbury, Chadlington and Leafield, and they are mainly from cars left by walkers or dogwalkers. If you are unlucky enough to suffer a theft from your car, call police as soon as possible (or Crimestoppers 0800 555 111) and cancel any cards which have been taken.

More scams

Two new types of scams have come to light. Rental scams involve someone posing as a landlord or property manager to make potential renters pay out money upfront for a property that isn't available, doesn't exist, or isn't theirs to rent out. Police advise that if you are considering renting a property, take care when entering an agreement to rent, make sure the property is available as advertised and meet the landlord in person before paying any deposit.

The other new style of scam is to send by email a message requiring you to pay a

parking charge – giving no details as to where or when an offence occurred or a car registration number. As for any suspected scam, the advice is not to click on the links in the message.

Police and community support

For information or advice on security concerns, please call 101 or, contact woodstockNHPT@thamesvalley.pnn.police.uk

Woodstock Neighbourhood Police Team

Stonesfield says 'Slow Down'*

*72% of respondents to the Neighbourhood Plan survey said that reducing traffic speed was important or very important.

Stonesfield Community Speedwatch (CSW) is looking for more volunteers.

CSW is organised by Thames Valley Police as part of TVP's objective to reduce speeding and accidents.

You need to be able to give an hour or so a month, at times that suit you. You will be given full training and work as part of a group of three.

Email if you would like to volunteer to help your village or want more information.

SAFER@stonesfieldpc.uk

SAFER is a Stonefield Parish Council Working Group



Education, culture & more

Stonesfield Library

The Library (telephone 898187) is open as follows:

Monday	2.30-7pm
Wednesday	10am-12 noon
Thursday	2.30-5pm
Saturday	10am-12 noon.

Val Phillips. (891455)

Friends of Stonesfield Library

Home Library Service

The Home Library Service is free and there is no charge for requests or late returns. To register for this service or for further information, telephone your local library or the Home Library Service on 01865 810259, or email homelibraryservice@oxfordshire.gov.uk

Deborah Wilson (898187)

Library Manager

I'm a reader

Emma Stone moved to the village in 2002. She works freelance with celebrities on charity campaigns.

I grew up in Headington, she says, and my nearest library was in Bury Knowle Park, on the ground floor of quite a grand, large Georgian house – which was a great setting for a child's imagination. We visited the children's section regularly but my main memory of that library was crossing the hall to the adult section when I was about ten and I found the Agatha Christie books. I read every one they had and absolutely loved them - my favourites were probably *And Then There Were None*, and anything with Miss Marple. I loved that she was underestimated as a silly old lady and then outsmarted the criminals *and* the police.

Stonesfield library was a godsend when my three children were small - it was an easy outing with the bonus of being right by the park. I took them regularly and they loved getting medals for the reading challenge each summer.

When I was young, my favourites were *Topsy and Tim*, Disney annuals and *The Tiger who came to Tea* – I still have my very battered old copy. My older sisters enjoyed the *My Naughty Little Sister* books, which I felt unfairly branded me, as the youngest, but when I had measles (aged 5) my middle sister packed me a shoebox full of little get well toys and activities, and I *knew* she stole the idea

from one of those books, so it wasn't all bad.


A bit later on I remember reading *When Hitler Stole Pink Rabbit*, and Anne Frank's diary – which was devastating. I scared myself silly with ghost stories and loved spy stories too. After Agatha Christie I moved on to my dad's war thrillers - Alistair Maclean's *The Guns of Navarone* and *Ice Station Zebra*, and Jack Higgins' *The Eagle has Landed*.

I didn't read much traditional literature at school. Pulling apart Thomas Hardy's *The Mayor of Casterbridge* in English lessons ruined it for me. I don't want to think about the writing to be honest, and it annoys me when there's too much description or lots of flowery words – I don't want a writer to show me how clever they are; I just want them to get on with the story.

I worked near a book shop in my 20s and discovered Jane Austen and Daphne Du Maurier. I went to Austen for the comedy value and romance, and Du Maurier for the atmosphere of suspense. I enjoy the spookiness of Susan Hill's books and Kate Moreton's storytelling.

I joined a book club here in Stonesfield about 20 years ago with some of the other mothers from toddler group and it's still going strong - so most of the books I read now are chosen by book club members. Recently I've enjoyed *Romantic Comedy* by Curtis Sittenfeld – which is a good holiday read and gives a fascinating insight into TV comedy writing. Laughing out loud when reading is priceless. I no longer waste time finishing a book I'm not enjoying. I used to feel obliged to finish but realised that this was insane. I've abandoned some of the books most beloved by others – like *Oliver Twist*, which I found depressing, slow and wordy. Give me the film with songs, any day!

Eleanor Bailey



YOUR LIBRARY NEEDS YOU!

Time to spare?
Looking for a new opportunity?
Friends of Stonesfield Library would like to meet you!
We support the library service by sharing the opening hours with the professional manager.
If you enjoy reading and helping people, this is the volunteering opportunity for you!
We work in pairs and carry out a variety of tasks during a session (usually one session of 2-3 hours per month).

Interested?
Come along to Stonesfield Library to find out more or contact Mike Pollitt on 01993 891856.

Clubs, societies & sport

Stonesfield Gardening Club



We had a welcome return visit from Rosy Hardy of Hardy's Cottage Garden Plants last month, bringing with her some examples of perennials that we can plant in our gardens to encourage all sorts of different pollinators. These plants will cater for the needs of beetles, flies, moths and butterflies as well as bees and wasps. *Brunnera* are very good for spring insects, as they flower early and are happy in shade. She also recommends *Heuchera* for the shade, which also have attractive flowers. She brought with her an attractive perennial *Lobelia*, tiny and prostrate, which will grow in mossy areas.

Other highlights were *Coreopsis*, *Oreganum*, *Echinacea* and *Achillea*, as well as *Gypsophila*, *Erigeron*, *Anemone* and *Persicaria*. All of these will be food for a wide range of insects and give great colour to the garden in all seasons. Having brought with her a van full of plants, members made sure she didn't have to take them all home, by buying at least half of what she came with!

At the Community Café last month, club members sold second-hand books and raised £70, which boosted the Café's funds.

October's meeting will be a tour of the Harcourt Arboretum, guided by committee member Dr Lauren Baker. We will meet there at 11am. Members free, Visitors £5 (pay on day by card or cash).

Happy gardening,

Diane Bates

Secretary Stonesfield Gardening Club

www.stonesfieldgardening.info

STONESFIELD GARDENING CLUB

Stonesfield Gardening Club is a friendly, sociable club with a full programme of events (see website). You can meet fellow members, listen to interesting and knowledgeable speakers talking about a wide variety of gardening topics and enjoy organised visits to various gardens.

Membership is open to anyone interested in gardening on payment of the **annual subscription (£10 per adult or £18 for a couple at the same address)** and all members receive a membership card entitling them, amongst other benefits, to discounts at local garden centres.

Visitors are welcome to attend a meeting for a fee of £4, deductible from membership if you join at the meeting.

More details at
www.stonesfieldgardening.info



Stonesfield Food Group

Emergency Food help

One of the aims of the Food Group is to support Stonesfield residents who are struggling to afford nourishing food. We are able to do this using the funds raised by the Community Cafés run alongside the Repair Café, and through other generous donations.

We are currently able to offer food parcels or emergency supermarket vouchers. If you, or someone you know, could benefit, contact Kate Harris, on 01993 898781 or via email at kateharris58@yahoo.co.uk.

If you are able to, you can support the food parcel initiative by donating tinned meat pies, hotdogs, meatballs, chicken, or ham. They can be left in the brown box on the doorstep of 6 Brook Lane.

Seniors' Café is back

Great news! The Seniors' Café is back in operation from 24 September. We have a **new location: the café will now be held at our community pub, The White Horse**. All other arrangements remain the same, 3pm till 4pm with a self-service of hot drinks and home baking supplied. We are very grateful and glad that Craig and Barbara have been so enthusiastic about hosting the café and look forward to seeing you there!

The Stonesfield Social

We have been working hard behind the scenes to plan for the year ahead. There is likely to be a change in frequency and also in location. We are meeting imminently to chat all this through, so please watch out for notifications on Nextdoor Stonesfield and also on the Facebook page of The Stonesfield Social for information.

As ever, if you would like to be involved in any of this in any capacity, you would be incredibly welcome!! Let me know.

Julie Curran (07973 730907)
juliecurran0@gmail.com

Stonesfield Environment Group

Water quality and river pollution

You may have heard about the new legislation introduced to Parliament to crack down on water company performance and accountability. The Water Special Measures Bill is promising much tougher enforcement and penalties for the water companies and more powers for the Environment Agency to regulate.

We are focused on collecting the most impactful data to discover the state of The Evenlode; this is both *E. coli* testing and the sampling and recording of the riverfly population. Our vision is to see the river's regeneration.

Political activities have been ramping up since the change in government and we have a raft of excellent data produced by Windrush Against Sewage Pollution and also our friends at Ilkley Water that will help us in our campaign. We'll report back on developments.

As ever, there is much to do so, please join us...

Julie Curran
juliecurran0@gmail.com

Stonesfield Community Orchard

Over the last five months, as many of you have noticed and stopped for a chat, we have been steadily progressing the management of the orchard / limestone grassland site. As advised by Filipe Salbany from Blenheim (see report on the village website; Community Action News) we have been removing blackthorn, hawthorn and blackberries from the site with as little disturbance to the grassland as possible. This is nearly complete, and we have also targeted the *Clematis vitalba* (old man's beard) which has been spreading all over the site and neighbouring area this year. You can also see that we have been removing old man's beard from the surrounding trees and shrubs on the southern border.

We continue to evaluate the site to have a detailed baseline to monitor progress, as we aim to enhance and promote the habitat, ensuring environmental benefit and increasing biodiversity.

Our first detailed report is on the limestone grassland (again, see village website) – this calcareous grassland is nationally scarce, with over 90% having been lost since the mid-20th century.

Hence we have had a lot of specialist interest and discussions on how best to manage the site for the longer term. In response to the findings, we have reduced the number of orchard trees in our funding applications to 17, and positioned them away from the key grassland area. We should hear the funding outcome by the time the *Slate* is published. Fingers crossed.

The site will soon be cut and the cuttings moved away – please let me know if you would like to help with hay raking.

We will get further detailed reports for insects and moths in the coming year. We will also monitor male glow worms, thanks to discussions with the National Trust lead on glow worms and also the lead on national glow worm surveys.

A big thank you to everyone who has been involved so far, and we hope to have more news for the November Slate.

John Sampson

Stonesfield Tennis Club

Another summer Wychwood League season has drawn to a close with the end-of-season one-day tournament.

The league we compete in is self-organised, involving 6 clubs in the area: ourselves, Charlbury, Moreton in Marsh, Bourton on the Water, Chipping Campden and (new to the league this year) Hook Norton. Some clubs struggled to put out teams this year and in fact Stonesfield were the only side that managed to play all ten fixtures. Despite this advantage we could only manage 4th place in the league, which was won by newcomers Hook Norton.

The end-of-season tournament hosted by Charlbury saw 4 clubs competing for the trophy. Stonesfield were the tournament winners last year but couldn't repeat that success, finishing joint third with Charlbury. Chipping Campden were the runners-up but comfortable winners were our newcomers Hook Norton, who have therefore taken all this year's silverware.

As mentioned, the Wychwood League is a self-organised league which has been

running since the mid 90s. Last year the Oxfordshire Tennis Association got to hear of our efforts and encouraged us to enter for their Connecting Communities Award. We did so and were a bit surprised to learn earlier this year that we had won the award. As winners we were automatically entered into the regional awards, which we also went on to win. We just failed to win the national awards but even so, it was a nice accolade for all the efforts by many people over nearly 30 years to keep the league going.

Although our competitions are over for the year, remember that our courts are playable year-round so there's no excuse not to keep playing over the winter months. If anyone is interested in playing some league tennis for the club next year, we'd be delighted to add you in to our small squad of players – just give us a call.

Andrew Tacon (891217)

Stonesfield Tennis Club

Stonesfield Football Club

The most observant of readers will have noticed that the leaves around our gorgeous village are turning from a luscious green to a beautiful vibrant russet reddish-brown and that can only mean one thing: yes, the footie is back! Our boys are once again strutting their stuff and trying to bring glory and silverware to Stonesfield.

Now, I know it's the wrong time of the season for cup finals, but The Firsts had a shot at glory in The Fred Ford Cup Final against Charlbury, which was held over from last season. The game was played in mid-September under floodlights and sadly our boys fluffed their lines, losing 3-0. I guess all I can say is, the less said

about that game the better: it's this season that counts! The Firsts are now under a new management dream-team of Tom Green (known as 'Greener' and forever-young Pete Searle (known as 'Searley'). Welcome back to the fold guys, we wish you every success and hope that you have huge dollops of juicy luck! They started the new league campaign with a draw (2-2) at Heyford Athletic. It is good to get a first point on the board, that's something to build on.

It is a similar story for The Reserves, who after a good pre-season, also opened their quest for glory in League Division 3 with a draw (2-2) at Ducklington. The Reserves have some good young players and are developing into a good team which, at least, should be hard to beat this season.

So, a reasonable start from both our teams and while there have been opportunities to grab the illusive First Fredo Award for season 2024-25, sadly no one grasped it. C'est la vie, there's always next month!

Tom Flanigan (891979)



earn your building badge

The Hut is coming and we need your help
Electrics. Plumbing. Flooring. Painting.
Shelving. Landscaping. Fundraising.

You name it, count us in.

Give time or materials
chair@stonesfield-scouts.org.uk



Church news

Church of England Worship at St James the Great, Stonesfield

(Benefice of Stonesfield with Combe Longa)

www.stonesfieldparishchurch.org

Rector: Revd Ralph Williamson,
rector@scbenefice.org, 01993 891872

Churchwarden: Lindsey Sellar
stonesfield@stonesfieldparishchurch.org

St James' Centre bookings:
sjcsbookings@gmail.com

For any enquiries or help, including pastoral support, please do contact us.

From the Rector - Church and Community

As I have got older, I have become more nostalgic about the past. To my delight, I was recently contacted by an old friend, who is trying to get in touch with someone we both knew well at college and have had no contact with since. As that friend very likely changed her name, our options for finding her are limited. But I know that in the early 1980s her father was a Methodist minister, working for the combined URC-Methodist Church in Skelmersdale, a New Town in Lancashire.

I visited them in January 1983, arriving cold and wet on my motorcycle, in the dark, having travelled from Edinburgh (and broken down) in a snowstorm and freezing rain. I remember it clearly. I climbed off my Honda, rang the bell, and was quickly ushered into the hall by my

friend, who seemed very distracted. At that moment a gunshot rang out. I had arrived at the very moment in TV history when JR - the fictional star of the TV series 'Dallas' was shot. As I walked in, the room was silent, with all eyes on the television!

The next day I learned more about Skelmersdale. It was earmarked for development as a New Town in 1961. Old buildings were pulled down, and a small shopping centre built for the projected population of 80,000. New estates and flats were built, and big financial incentives given to companies who moved into purpose-built factories. Families and newly recruited workers settled there, and by 1970 the town was beginning to feel like home. But in the economic downturn of the 1970s the subsidies ended, and all five big employers closed their factories, leaving the people high and dry without work.

The situation when I visited in 1983 was dismal. But the churches remained, and people like my friend's father ministered there through those bleak years, caring for the people struggling to pay their bills, children and teenagers with no viable future in sight, and people whose working lives had been ended prematurely. At the time I was impressed by the dedication I saw in that man and his family, and impressed by the commitment of the people of the church to its suffering community. In times of difficulty, when others have packed up and left, the church has remained, and has not abandoned its

commitment to serve and care in the name of Christ. Although far from perfect, Anglican, Methodist, URC, Catholic and Baptist churches, and others, have held together troubled communities through the darkest times. In the Church of England I remember the reports '*Faith in the City*' and '*Faith in the Countryside*' of the 1980s, which challenged government, church and people to rise to the challenges facing places of deprivation and need on Britain.

Our village is so very different from Skelmersdale New Town in the 1980s. But here the parish church of St James the Great and the Methodist Church still play a vital role in our community, providing a place to worship God and give thanks, a place to pray and seek God's presence, a place for joy, tears and celebration, a community of service, a welcome for all, and a spiritual beacon of hope and love. Materialism has become the creed of modern life, but thankfully the church, for all its challenges, continues to bear witness to a better way for us to live together, and holds dear the values of love and community.

Revd Ralph Williamson - Rector

Church services

Sunday 6 October [Nineteenth Sunday after Trinity]

8am	Stonesfield	Holy Communion [BCP/said]
9.30am	Combe	All Age Worship
11am	Stonesfield	All Age Worship – Harvest Festival

Sunday 13 October [Twentieth Sunday after Trinity]

8am	Stonesfield	Holy Communion [BCP/said]
9.30am	Combe	Parish Communion
11am	Stonesfield	Parish Communion

Sunday 20 October [Twenty-first Sunday after Trinity]

8am	Stonesfield	Holy Communion [BCP/said]
9.30am	Combe	Parish Communion
11am	Stonesfield	Parish Communion

Sunday 27 October [Last Sunday after Trinity]

8am	Stonesfield	Holy Communion [BCP/said]
9.30am	Combe	Parish Communion
11am	Stonesfield	Parish Communion
5pm	Combe	Evensong

Wednesdays

9.30am	Stonesfield	Holy Communion (every week except 16th)
11am	Combe	Morning Prayer (9, 23 October)

Stonesfield Methodist Church

Services for October

Sun 6 11am The Reverend Andrew Biggs
Holy Communion Service

Sun 13 11am To be arranged

Sun 20 11am Peter Allen

Sun 27 11am Keith Crawford

Christmas Shoebox Appeal

It's Shoebox Day here on Saturday 26 October, from 2-4pm. Empty boxes will be ready and waiting; each needing to be filled with goodies for a child.

Do come and bring any items you have, and join the happy afternoon preparing the boxes for their long journey to Eastern Europe in November. They will head to places where gifts can be few and life has its ups and downs.

Give a little time to the shoeboxes and their recipients: remember them often and keep them in your prayers.

Give, and it will be given to you.

*A good measure, pressed down,
shaken together and running over,
will pour into your lap.*

Luke 6:38a

More shoebox details are available; just get in touch.

Come to a Service soon.

Kathleen Albért

k.m.albert14@gmail.com

Roman Catholic Worship

Prayer

How often do we pray? Probably for many of us, not often; maybe more in times of sadness, stress, danger, fear or thanksgiving, but generally not as a part of our daily routine. We all have our excuses: too busy, too tired, too anything. But why not pray?

Wikipedia tells us that: 'Prayer is an invocation or act that seeks to activate a rapport with an object of worship through deliberate communication'. So prayer is communication, and good communication is two-way: we pray, God listens. Jesus knew the power of prayer: he prayed at least 38 times as recorded in the Gospels, so clearly He did not see prayer as a futile action.

Jesus repeatedly taught His disciples to pray in His name (John 14:13-14; 15:16; 16:23-24). Prayer is our method of reaching out to God via Jesus' teaching and example. Jesus gave us template of how to achieve effective prayer:

- Pray in private: Jesus taught that people should pray in private, in their room, with the door closed, and to pray to God as their Father.
- Pray with others: Jesus encouraged people to pray with others, and promised to be present when two or three people gathered in his name.
- Pray with a forgiving heart: Jesus taught that people should pray with a forgiving heart.
- Pray with childlike simplicity: Jesus taught that people should pray with childlike simplicity.

- Pray with faith: Jesus taught that people should pray with faith.
- Pray with persistence: Jesus taught that people should be persistent with their prayer.

Holy Mass

Sunday Mass 9.15am

Weekday Mass

Wednesdays: 9.15am

Fridays: 9.15am

For Parish updates, more information and further support, please go to www.stteresachurch-charlbury.com/ or contact Fr. Clive Dytor, Parish Priest: fr.clive.dytor@rcaob.org.uk

Roman Catholic Community in Stonesfield

STONESFIELD LUNCH CLUB

Stonesfield Lunch Club meets every Weds 11 till 2 (for members) at the St James' Centre.

Lunch Club provides a social occasion, friendship and support for our more mature residents along with refreshments, activities and a freshly cooked 2-course meal each week.

Volunteers are always welcomed for many roles and this is a lovely way to be involved in village life. Contact me if you would like more information on becoming a member or in volunteering.

Kate Harris 01993 898781 or kateharris58@yahoo.co.uk

JUNIOR TAE KWON-DO

The Korean art of Self-Defence

Develop your children's self-confidence, concentration and help them to learn respect for themselves and others.

New lessons developed to be fun and informative for ages 5-17.

Stonesfield Village Hall

Mon and Thur: 5.30-6.30pm

Come and try a complimentary session

ITF registered international instructor
James Kumar CRB vetted

Further information, contact James
01865 772883 07788 583 965
Jameskumar@hotmail.co.uk

Stonesfield Tennis Club

The club was established over 100 years ago with membership open to all at very competitive subscription rates. The two astro-turf tennis courts were re-laid in 2018 and are in excellent condition with plenty of court availability.

Phone: 07795 441986
(Andrew Tacon; Chairman)

Website:
[https://clubspark.lta.org.uk/
StonesfieldTennisClub](https://clubspark.lta.org.uk/StonesfieldTennisClub)

Email: stonesfieldtc@gmail.com
Facebook: [@stonesfieldtennisclub](https://www.facebook.com/@stonesfieldtennisclub)
Instagram: [@stonesfieldtennis](https://www.instagram.com/@stonesfieldtennis)

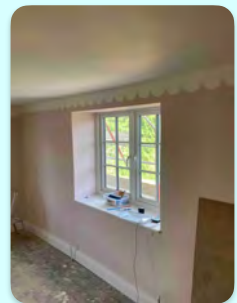


Tel: 07435 261934

www.dexpaintingteam.co.uk

DEX
Painting
PAINTED WITH LOVE
Tel: 07435261934

- Interior
- Exterior
- Artistry
- Lime washing
- Gilding
- Wood restoration





windrushgroup

print | design | web | large format

Celebrating our 50th anniversary, we have been delivering our print expertise to a wide variety of clients from the smallest personal project through to much larger organisations. We pride ourselves in delivering the same level of service for all.



01993 772197

Chris@windrushgroup.co.uk
www.windrushgroup.co.uk

Windrush Group, Windrush House, Avenue Two,
 Station Lane, Witney, Oxfordshire OX28 4XW



Back or Joint Pain?
 Pre or post operative rehabilitation?
 Need to improve strength or fitness?
 Feeling stiff and inflexible?

Address muscle imbalances, improve posture, develop your core and build fitness through individual Pilates sessions in our Stonesfield studio with reformers, tower, chair and more

Call Lucy on 07484901615 or email
 info@resiliencepilates.co.uk



COTSWOLD GARDEN DESIGNER

- Looking to improve your outside space but stuck for ideas on how to make the most of it?
- Want somewhere to entertain?
- A space for your children to play?
- Or maybe you just need a quiet place to relax, a calming, scented corner, just for you?



I can provide a full garden design, planting plans or a simple garden report - some ideas of how you could best use your outdoor space and the types of plants that you like and would suit the environment.



CONTACT LORRAINE:
 lorraine@cotswoldgardendesigner.co.uk
 07516262560
 www.cotswoldgardendesigner.co.uk

best-one 

Suriya Express & Post Office

1 Pendle Court, Pond Hill, Stonesfield
Tel/Fax 01993 898379

—
Bread & Pastries
Fine range of Groceries
Fruit & Vegetables
Beers, Wines & Spirits
New range of Organic Products
Dry Cleaning

—
Opening hours:
Monday to Friday 7am–8pm
Saturday and Sunday 8am–8pm*
Bank Holidays 8am–8pm*

**P.O. closed on Sundays & on Bank Holidays*



All aspects of roof work undertaken

Slates • Tiles • Flat roofs
Chimneys • Valleys • Leadwork
Moss clearance
UPVC fascias • Soffits • Gutters
Advice and estimates free

Freephone
0800 955 5063

Mobile
07817 792194

WOODSTOCK TAXI SERVICE

07766 743081



TOWNHOUSE

—● EXECUTIVE TRAVEL ●—

- Airports & Stations
- Hospitals & Schools
- Theatres & Restaurants
- Day trips & tours
- Weddings & Proms
- Shopping trips

Our friendly team includes female drivers

www.townhousewoodstock.co.uk



Need help with your garden?

*Garden maintenance and design
Planting, pruning and weeding
Advice for free*

Michelle Turkie

Please contact me

07531 717991

michelleturkie@gmail.com

Are you a local business?

You could advertise your
business here for £15 per month
Larger spaces also available

For details email
slate-ads@stonesfield.online

M J Fyson BA BA VetMB MRCVS
The Coach House Veterinary Clinic Ltd
Wroslyn Road
Freeland
Nr. Witney
Oxon OX29 8AQ
E-mail: coachhousevet@outlook.com



We are a traditional independent small animal
Veterinary Clinic

- Opening hours: Mon-Fri 08:00-18:30, Sat 09:00-12:00
- Consultations by appointment only, please phone 01993 880551
- Friendly personal service for dogs, cats and small furies
- Stockists of Symply and Canagan pet foods
- Follow us on Facebook: Coach House Veterinary Clinic

01993 880551

www.coachhousevetclinic.co.uk



Rob Atkinson

Member of the
Chartered Institute of Building

General property
maintenance and
high quality DIY



General repairs
All carpentry - Decorating
Minor plumbing

Prompt, reliable and
recommended service
No job too small

Tel: 07876-275300

robatkinson.ajdw@gmail.com

"A job done well"

Roberts Garden Machinery Ltd



- Professional servicing and repairs of most makes of garden machinery
- New & second-hand machinery supplied
- Collection & delivery by arrangement

18 years' experience with LAWNMOWER SALES & SERVICE

Open 8-5 Monday-Friday, 8-12 Saturday

Unit H5, New Yatt Business Centre, New Yatt, OX29 6TJ

Tel: 01993 881320 or email: robert.milloini@btinternet.com

JEM
CHIMNEY
SWEEPING

- NO FUSS •
 - NO MESS •
 - NO PROBLEM •
- Tel: 01865 772996

Are you a local business?

You could advertise your business here
for £3 per month.

For details email

slate-ads@stonesfield.online





DJR MILES

BATHROOM, PLUMBING & HEATING ENGINEERS LTD

www.djrmiles.co.uk

 BATHROOM & PLUMBING

 GAS & OIL HEATING SYSTEMS

 RENEWABLE HEATING SYSTEMS

t: 01993 891533 m: 07860 142230

e: [djrmpheltd@yahoo.co.uk](mailto:djrmbpheltd@yahoo.co.uk)



THAMES VALLEY TREE CARE LTD

Founded in Stonesfield.
Providing a professional, reliable and
innovative service in all aspects of tree
surgery and hedge management

FREE no obligation quote

Tel: 01993 891381
Mob: 07971018279
Email: info@tvtreecare.co.uk
www.tvtreecare.co.uk

DIRTY CARPETS, UPHOLSTERY, RUGS



Most carpets dry within the
hour
Unbeatable results, removes
almost all spots & stains
call
GRIMEBUSTERS

01993 868924 01865 726983
www.grimebusters.co.uk

Tracey Keeling 

Personal Trainer

The Older Adult Training Specialist

Any age is the right age to exercise.
(Face to face or on-line)

07977 228756
www.hardenhealthandfitness.co.uk

A.L. SOLE & SON


FUNERAL DIRECTORS

Bidston Close · Over Norton · Chipping Norton · OX7 5PP
01608 644112
office@solefunerals.co.uk
www.solefunerals.co.uk



Your local independent funeral director since 1948.
Providing a considerate and appropriate service
with a refreshingly normal approach.

*24hr Service
*Private Chapel of Rest
*Pre-paid Funeral Plans

Lighting Your Way Into The Future

STEPHEN J. WILEY

ELECTRICIAN

Additions • Alterations • Rewiring
Surveys • Security Lighting
Cookers • Showers
Telephone Points

NO JOB TOO SMALL

Tel (01993) 882778/881409

90 Main Road, Long Hanborough, Witney, OX29 8JY
Stephen.Wiley@btconnect.com

OXAD

Stonesfield's new Architecture and Design Studio

- All planning applications
- Listed building consents
- Building Surveys
- Renovations, conversions and new build projects
- Full design packages from concept to construction

Need advice? We are happy to help, feel free to call us



<https://www.instagram.com/oxa.design/>



Andrew 07462879191

Andrew A. Adams FCCA

Chartered Certified Accountant

Quality personal service for your
Accounting, Taxation and Business needs

Competitive fees agreed in advance

Free initial meeting

Telephone: 07790 854574

01993 891280

Email: aaadams@TalkTalk.net

onevillage.com

**One place to go
for interiors**

**Online & On the A44
in Woodstock**

The social choice

WORKING WITH
CRAFTMAKERS' CO-OPS
IN ASIA & AFRICA
SINCE 1979

PJR Plumbing & Heating

- * Installation
- * Maintenance
- * Repair & Service
- * Gas Appliances & Safety Certificates




Tel: 01993 881069

MOB: 07515 733398

500807

We care, when it matters most.



An award-winning local family business
trusted by families for over 60 years
with a first class reputation for quality,
value and service.

“Invaluable support”
“Seamless arrangements”
“Nothing was too much”
“Sympathetic and professional”

Above are just some of the many touching
comments we have received about our service.

Learn more about us at

www.jerramsbrothers.co.uk or call us at any time.

Jerrams Brothers

Funerals Funeral planning Memorials Support Est. 1949

33 High Street Woodstock OX20 1TE 01993 811491
18 The Kidlington Centre, Kidlington OX5 2DL 01865 374444





Professional, local tree care

Removals, pruning, stump grinding and
hedge cutting

Insured and qualified

Chris Murphy FdSc (Arb) NdArb
07738 151880

chris@ashdowntreemanagement.co.uk
www.ashdowntreemanagement.co.uk



Maeve O'Donnell
Acupuncture

**Acupuncture for stress reduction,
pain relief, arthritis, migraine, fatigue,
hormone imbalance, and more.**

Appointments available at my Stonesfield
clinic or in your own home.

To find out more or arrange an initial
consultation please contact me on 01993
898102 / 07791 278618

maeve@maeveodonnellacupuncture.co.uk
or visit

www.maeveodonnellacupuncture.co.uk

 @maeveodonnellacupuncture

Woodstock Solicitors

WILLS ~ PROBATE ~ POWERS OF ATTORNEY

INHERITANCE TAX PLANNING

Tel. 01993 811 792

Email info@woodstocklaw.co.uk

Woodstock Solicitors - 1st Floor - 32 New Road - Woodstock - OX20 1PB



Hypnotherapy

For help with anxiety, stress, pain control, insomnia, phobias, unwanted habits, confidence and self-esteem, exam and interview nerves.

Contact: Linda Flanigan
Clinical Hypnotherapist
GHR Registered & Member (Lic.) of National Council for Hypnotherapy

Tel: 07866 360359
Email: linda@lfhypnotherapy.co.uk
www.lfhypnotherapy.co.uk



**WINDOW DESIGN
INTERIORS**

BLINDS, CURTAINS, FABRICS

**Made to Measure
Curtains and Blinds**

Fabric Showroom

**Measurement and Fitting
Service**

www.windowdesigninteriors.co.uk
01993 870606
Call us to make an appointment

**Bed and Breakfast
at Combe**

For details
please view
www.greenclose.net
or call 01993 891223

**MICHAEL PRICE & SON
PLASTERING**

58 Ticknell Piece Road
Charlbury, OX7 3TW

Tel 01608 811642
Mobile 07710 170049

Foot Health Professional

Joanna Attridge
MCFHP MAFHP



Foot problems?
I will visit you in
the comfort of
your own home

07961 620 292
joannafoothealth@gmail.com
www.joannafoothealth.co.uk

Based in Combe
Fully qualified and insured

GEOFF BOOTH

Landscaping • Paving • Walling
Driveways • Fencing • Brickwork
Building maintenance
Garden maintenance
Free quotations

Mob: 07710 628248
Email: geoffboothlandscaping@hotmail.com

Enjoyable and friendly art classes

Drawing and painting
Still Life

For more information contact
gabrielekern31@gmail.com

PROBLEM FEET ?!

NAIL CUTTING. CORNS. CALLOUS.
HARD/DRY SKIN. FOOT MASSAGE.

**TREATMENT IN THE COMFORT
OF YOUR OWN HOME!**

Sharon Davies MCFHP/MAFHP
01993 891132/ 07941843353

OVER 20 YEARS EXPERIENCE

**REGISTERED MEMBER OF THE
BRITISH ASSOCIATION OF FOOT
HEALTH PROFESSIONALS**

Rita Johnson

(was Hutchings)

Painter & Decorator

Internal & External.

Quality work.

Clean, efficient, friendly worker.

Contact me for free estimates.

01993 772078 or 07826 011560

Sewing & Alterations

... to make that garment fit you!

Fittings, hem levels, and a varied range of
alteration and sewing work carried out.

Dresses, Skirts, Tops, Shirts, Jackets,
Trousers, Curtains, Cushions and beyond!

Louise Everett-Brown

lou.smiley1@gmail.com
01993 813873



PRICE LIST

1 BUILDERS BAG £90.00

2 BUILDERS BAGS £175.00

3 BUILDERS BAGS £250.00

**PRICE INCLUDES VAT AND DELIVERY WITHIN
10 MILES OF LONG HANBOROUGH**

☎01993 880 500

✉ info@bowards.co.uk

A. K. P. DIXON

Home & Garden Maintenance
& General Handyman

For all those jobs you need doing
inside & outside – I'm your man!

Call Ade on 01993 813873

or 07825 631111

email: handymanade65@gmail.com

D S JONES

BUILDING & ROOFING

All aspects of building, & roofing undertaken

For all enquiries call or email

07496149990

djsmaintenance@hotmail.com

Instagram: @dsjonesbuilding



**1 Cotswold Business Park.
Range Road, Witney.
Oxfordshire OX29 0YB.**

Oxfordshire based company bringing great local building services to your door...

- ✚ Boiler service and repair.**
- ✚ Gas, Lpg, Oil, and Heat pumps.**

- ✚ Plumbing and heating services.**
- ✚ Repairs and installations.**

- ✚ Building renovations & maintenance.**
- ✚ New builds, extensions, repairs.**

- ✚ Electrical services.**
- ✚ Repairs and installations.**
- ✚ Solar panels & batteries.**



01993 771754



Info@gandoengineers.co.uk

www.gandoengineers.co.uk



TOWN & COUNTRY TREES LIMITED



A tree surgery company with
the integrity you can trust.

Tel: **0845 458 2980**

Mobile: **07976 261850**

Email: **info@townandcountrytrees.co.uk**

www.townandcountrytrees.co.uk

PELLMANS Solicitors

- **Business, Agricultural and Employment Law**
Contracts, Legal Compliance & Disputes
- **Property**
Buying & Selling Homes, Commercial & Agricultural
- **Wills, Probate and Trusts**
Tax Planning, Lasting Powers of Attorney & Elderly Client Advice

01865 884400

www.pellmans.co.uk

1 Abbey Street, Eynsham, Oxford OX29 4TB

Home visits and evening appointments available



Perfect Finish

Hand Ironing Service

- Fully Insured
- Collection & delivery
- Shirt ironing and hanging service
- Clothing, bedding and linen
- Based in Stonesfield

Contact Marie: 07969 685 479

perfectfinishironing@hotmail.com

www.perfectfinishironing.co.uk

HALLOWEEN

AT BLENHEIM PALACE

25 OCT - 3 NOV

YOU'RE IN FOR A
FRIGHTENINGLY
GOOD TIME

New characters to meet - if you dare

New lights for more frights

Spooktacular Halloween afternoon teas

Day, dusk and night time slots available

Christmas at BLENHEIM PALACE

15 NOV - 1 JAN

YOUR MOST MAGICAL
CHRISTMAS YET
STARTS HERE

Neverland in the Palace

A brand-new Illuminated Trail

Christmas Market in the Great Court

The Great Skate

...and so much more

WHAT'S ON



Find out more here





WHO LOVES
A GARDEN LOVES
A GREENHOUSE TOO

WILLIAM
COWPER



A GARDEN
BELIEVE IN
TOMORROW
AUDREY
HEPBURN

IF YOU HAVE A
GARDEN AND A LIBRARY
YOU HAVE EVERYTHING
YOU NEED

CICERO



AND THE SECRET
GARDEN BLOOMED AND
BLOOMED AND EVERY
MORNING REVEALED
NEW MIRACLES

HODGSON
BURNETT

WHAT IS THIS LIFE
IF, FULL OF CARE,
WE HAVE NO TIME
TO STAND AND STARE.

W H DAVIES

I AM NOT AFRAID
OF STORMS,
FOR I AM LEARNING
HOW TO SAIL MY SHIP.

LITTLE
WOMEN

THE LOVE OF
GARDENING IS A SEED
ONCE SOWN
THAT NEVER DIES

GERTRUDE
JEKYLL

20% STONESFIELD
DISCOUNT. ONLINE SHOP:
ABLACKBIRDSANG.COM
OR CALL 01865 600926



CHRISTMAS DECORATIONS: LEAF QUOTES, MISTLETOE, CAROLS, I SAW THREE SHIPS,
HOLLY & IVY, PARTRIDGE & A PEAR AND SO MUCH MORE...