



Issue No 547 June 2024

Welcoming Craig & Barbara



We may soon be raising a glass at the White Horse with the new tenant Craig and his business partner Barbara. At the time of writing they've been working hard alongside the pub committee towards the successful conclusion of the tenancy agreement and, subject to completion, are looking forward to fully reopening the pub as soon as possible.

We spoke to the busy pair earlier in May and their enthusiasm is clearly evident. 'Thank you for choosing us!' they said. 'We're thrilled to be coming to the White Horse and to Stonesfield. We've been working together for many years since first meeting at the Boat Inn in Thrupp, and we have a very similar mindset on what we believe a great pub should be.'

'Our attraction to running a community pub is exactly that – the community. You are the

heartbeat of the White Horse and our mission is to provide reasonably priced great food, local ales and a warm and friendly welcome – whether it's for a bite to eat, a pint with friends, a coffee and cake, or just to pop in for a chat. Our doors are open to all.'

'We want to create a proper pub that's accessible to everyone, something there seems to be very few of these days!'

Both have a long history in the hospitality industry. 'Catering is in my blood,' said Barbara. 'My late father was an RAF Chef and later head of department at what's now the City of Oxford College. I've been working as a chef in the Oxfordshire area, most recently at the Black Prince in Woodstock, where Craig and I took it from strength to strength to be number one on review sites for several years.'

Continued on p4

Do you want to send in an article but have no email?

Just call the editor (see below) who can arrange to collect your handwritten copy.

Do you want to advertise?

An advertisement in *The Stonesfield Slate* starts from as little as **£3 per month**.

Please email **slate-ads@stonesfield.online**, or call the Publishers on 01993 898841, for full details of availability, sizes, requirements and cost. We can also help with design if required.

Any new advertisements, or changes to existing advertisements, should be emailed to **slate-ads@stonesfield.online** **by 10th of the month**.

All advertisements must be **paid for in advance**.

Disclaimer

The Stonesfield Slate is a village amenity, produced and distributed by volunteers. It cannot be held responsible for any of the views expressed in its pages nor does it endorse any of the products or services advertised.

Articles are solely the responsibility of the writers and their opinions do not necessarily accord with those of the editors or publishers.

Whilst we strive to ensure all information is correct, we are not responsible for anything that happens as a result of you using the information. If you find any errors or omissions then please contact the Publisher and we will endeavour to correct them.

Dates for your diary are always subject to change. Please check with event organisers.

The editor and the publishers reserve the right to edit, shorten or omit any article submitted.

Publishers

Diane & Paul Bates,
Waterloo Barn, Laughton Hill,
Stonesfield, OX29 8DY
(898841)
slate-pub@stonesfield.online

Editor for July issue

Fiona Dangerfield
(07814 112437)
slate@stonesfield.online

Copy:

Deadline for next issue 15 June

Please email copy to
slate@stonesfield.online
or contact the Editor by phone.

Editor

Fiona Dangerfield
(07814 112437)
slate@stonesfield.online

Printer

Windrush Press, Witney
©TheStonesfieldSlate 2024

Advertising:

Deadline for next issue 10 June

Advertisements to
slate-ads@stonesfield.online

Current and past copies of the *Slate* are available at www.stonesfield.online

Dates for your diary: June

1	Community and Repair Cafe	Village Hall	10am-2pm
2	Grey Cat Open Studio,	Woodlands Rise	10am-4pm
3,10,17,24	Monday Coffee	St. James' Centre	8.45-11.30am
3,6,10,13,17	Taekwondo	Village Hall	5.30-6.30pm
4	Youth Group Meeting	Village Hall	TBA
4,11,18,25	Seniors Café	Village Hall	3-4pm
4,11,18,25	Stonesfield Social	Village Hall	5-6.30pm
4,11,18,25	Zumba	Village Hall	7-8pm
4,11,18,25	Strong Nation HIIT	Village Hall	8.15-9.15pm
5,12,19,26	Gatehouse Pilates	Village Hall	9.30-10.30am
5,12,19,26	Hannah Bathe HIIT Class	Village Hall	7.15-8pm
5,12,19,26	Folk Dancing	Village Hall	7.45-10pm
6,13,20,27	Upholstery Club	Village Hall	9.30-12noon
6,13,20,27	Book Break	Stonesfield Library	12.30-2pm
6,13,20,27	Hannah Bathe HIIT Class	Village Hall	7.15-8pm
7-9	Folk Dance Weekend	Village Hall	
7,14,21,28	Baby & Toddlers Group	Village Hall	10-12noon
7-30	'Our Megalosaurus'	The White Horse	pub hours
8	Olly Charles	S S & S Club	8.30-11pm
9	Garden Open Day	Bridewell Garden	11am-4pm
15	Chrissie's Owls Coffee & Cake	St James' Centre	9am-1pm
16	Environmental Day	Combe Mill	10.30am-5pm
16	England Opening Euro Match	Sports and Social Club	TBC
19	Oxfordshire Cycling Group	Village Hall	8.30am-6pm
20,24,27	Taekwondo	Village Hall	5.30-6.30pm
20	England Euro Match	S S & S Club	5pm
21,22	Much ado about nothing	Sarsden Glebe	As per tickets
22	Glam Resurrection	S S & S Club	8.30-11pm
23	June Open Gardens	St. James' Centre	2-5.30pm
24	Neighbourhood Plan Open Meeting	Village Hall	7.30pm
25	England Euro Match	S S & S Club	8.30pm

Notices & news

Thank You!

A huge thank you for the fundraising support received for our Race for Life in Falmouth on Saturday 12 May, for Cancer Research UK, with our total raised so far £1,347 including Gift Aid.



I ran 5km while Emma ran 10km for the second year. Next year, we will both run the 10km distance along the Falmouth coast and up around Pendennis Point, hopefully continuing to raise vital funds for the many in need. Thank you!

Dan & Emma O’Gorman

Welcoming Craig & Barbara (from p1)

Craig is equally experienced. ‘I’ve been working in hospitality for 26 years. I’ve always had a passion for this industry since

a very young age, and started my career at a Spanish restaurant in my home town of Burton-on-Trent, moving to Oxfordshire in the early 2000s to continue my journey to learn about all aspects of the industry.’

The pair are keen to emphasise that the pub will be available for a wide range of meetings and events. ‘We’re looking forward to welcoming all groups to the pub including local cycling and walking clubs, work get-togethers, family parties and all kinds of community groups. Come and talk to us about any specific catering you would like, or feel free to just pop in for a chat! We want to support the Stonesfield community in any way we can, and I’m sure that by supporting each other we can create something special.’

We wish Craig and Barbara our very best for this next chapter of the pub’s history. It’s still a very tough economic environment for running any kind of successful pub, and work on safeguarding the White Horse for the future continues. The committee are still very much committed to a long-term timetable of repair, improvement and investment, and we’ll be in touch soon about future plans and funding.

Thanks again to you all for your continuing support, and we pay tribute to all the efforts of our wonderful pub volunteers who’ve once again gone the extra mile in preparing the building and grounds for reopening.

Stonesfield Community Pub Ltd

Open Studio - Sunday 2 June

Grey Cat Studio will be open for visitors on Sunday 2 June between 10am and 4pm. On display will be paintings and prints by Rachael Sherlaw-Johnson and Jenny Lines. Grey Cat Studio, Woodlands Rise, Stonesfield OX29 8PL.

Pictures @ The Pub gets crafty ...

In order to give our craftspeople and designer-makers the opportunity to showcase their work, we will be holding the first 'White Horse Arts' event on Saturday 14 September in the pub garden. This will complement our September exhibition which will show artworks on a literary theme.

This will be an all-day event and we would like to offer a wide variety of handmade work including (for example) ceramics, glass, textiles, jewellery, woodturning, dressmaking, stone-carving, quilting, metalwork, upholstery, blacksmithing, mixed media works, sculpture, floristry, papercraftWhat else do you make?

Arrangements will be finalised in the coming weeks but at this stage we wish to ascertain the level of interest from those who are resident in Stonesfield, after which we may extend the invitation to our neighbouring villages. If you are interested in participating and would like to discuss, please get in touch by 21 June at triywnwilo03@gmail.com.

We look forward to hearing from you.

Trisha Williams for Pictures @ The Pub

Claire Renshaw for the White Horse

Committee

Community and Repair Cafe

Our next cafe is on Saturday 1 June at Stonesfield Village Hall with repairers starting at the new time of 10am. Do bring all your items which need some care and expertise. We can repair furniture, computers, clothes and all electrical items as well as sharpen your knives and garden tools. We look forward to welcoming you but to make sure your item will be looked at, please do try to arrive by 12.30 latest. If you can let us know what you are bringing that would be very helpful (stonesfieldrepaircafe@gmail.com). All your generous donations for our work go to good causes in the village.

While you wait the community cafe will be serving tea, coffee and delicious cakes (10am onwards) and a light lunch too (from 12.00 noon until 2pm). Where possible we work with Oxford Food Hub to repurpose surplus food. This not only stops perfectly good food going to landfill, but significantly helps us keep our costs down, so that any money we make can be channelled towards helping villagers survive the current cost of living crisis. The Village Hall generously sponsors the club room. We work on a pay-as-you-feel basis (cash only), that means you can contribute however you can to the success of our project: donating your time, skills, money, or something even more imaginative! We will have a menu with indicative costs on it so that you can gauge what to give, but ultimately it's up to you.

Mike Sofroniou and Susan Rudlin

Stonesfield Village Hall

A big thank you to everyone who has been in contact with us as a result of last month's Slate entry – we really do appreciate all the help and recommendations for contractors. Moving on from the incident that caused damage to the hall, we have been very busy getting building repair quotes to get the work done.

We had a successful Committee Meeting on 13 May, where we discussed many of the projects we are working on at the moment, one of those being the creation of a local Youth Group. There will be a separate meeting to discuss this at the hall on Tuesday 4 June.

Please do not forget that we have the Community Repair Cafe running again on Saturday 1 June from its new time of 10am!

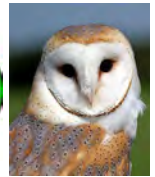
The 52nd Stonesfield Folk Dance Weekend 7 to 9 June 2024. Wychwayz Border Morris has confirmed that they will be able to join us for the Saturday lunch break. Could anyone wishing to order food at the weekend please go to www.stonesfieldfolkdance.danceorg.uk and open the Folk Dance Weekend page and scroll down the Food Order Form. Any queries to r.stewart.nicholls@googlemail.com

On Wednesday 19 June we are again hosting the start and finishing point for the Oxfordshire Cycling Group – Please be aware that there will be a lot of cyclists completing a marked route from and back to the village hall on this date, so do give them a wave and a cheer when you see them.

On Monday 24 June the Neighbourhood Plan team is holding a meeting with a village presentation from 7.30pm.

We would like to apologise to anyone who has tried to reach us by phone as we have had an issue with the Booking Line number not forwarding the calls but BT are working to resolve this as soon as possible.

Jacqueline Carthew (898919)
Secretary & Booking Clerk
stonesfieldvh@gmail.com



JOIN US FOR TEA, COFFEE & CAKE!

ENJOY A CUPPA WITH FRIENDS OR POP ALONG FOR TAKEAWAY CAKE!

09.00AM TO 13.00 PM

SATURDAY 15TH JUNE 2024

St JAMES CENTER, HIGH ST, STONESFIELD

A FUNDRAISER FOR STONESFIELD BASED

CHRISSIE'S OWLS & STONES-
FIELD OWL RESCUE



IN ADDITION TO CAFÉ:



**MEET CHRISSIE & SOME OWLS!
FIND OUT HOW TO ADOPT AN OWL,
NEW/NEARLY NEW BRIC-A-BRAC STALL**

Stay Safe!

After a number of near misses at the newly resurfaced Duke of Marlborough / A44 junction, residents are reminded to take extra care when using the junction.

The grass on the verges makes visibility difficult (thank you to the local resident who took a sickle to it!) and drivers are encouraged to be vigilant when turning off the A44 and giving way to traffic turning right onto the Charlbury Road. Stay safe everyone!

Fiona Dangerfield
Editor

Neighbourhood Plan Steering Group

We have been keeping you up to date with frequent articles in the Slate. But it is time you had the chance to ask us questions about the progress we are making. We are therefore holding an open meeting on Monday 24 June at 7.30 pm in the village hall. There will be slides, explanations, and invitations for people to challenge our methods and hold us to task.

We will be sharing examples of the policies we have drafted (based on data compiled from your responses to last year's survey); we'll show you excerpts from our Landscape Assessment, our Character Assessment and our Housing Needs Assessment; and we'll indicate our likely time frame for completing the draft and the subsequent consultation phase.

We look forward to seeing you there.

Caroline Friend
info@stonesfieldplan.com

A colorful poster for 'Stonesfield Open Gardens' featuring a floral border. The text is centered and reads: 'Stonesfield Open Gardens', 'Sunday 23rd June 2024', '2.00pm – 5.00pm*' (with a sub-note '* Gardens open until 5.30pm'), 'Tickets £6 (cash or card) (accompanying under 16 children free)', 'Tickets purchased at St James' Centre OX29 8PU plus Homemade teas & cake plus Book and plant sale', 'Limited car parking available at Primary School Dogs only allowed with garden owners' permission', and the website 'www.stonesfieldgardening.info'.

**Stonesfield
Open Gardens**

Sunday 23rd June 2024
2.00pm – 5.00pm*
* Gardens open until 5.30pm

Tickets £6 (cash or card)
(accompanying under 16 children free)

Tickets purchased at
St James' Centre OX29 8PU
plus
Homemade teas & cake
plus
Book and plant sale

Limited car parking available at Primary School
Dogs only allowed with garden owners' permission

www.stonesfieldgardening.info

Pub AGM



There was a good turnout of shareholders at the AGM of Stonesfield Community Pub Ltd on Monday 20 May.

Lots of lively debate and questions.

Full report in next month's *Slate*.

Save the date! Summer Fete

Stonesfield Primary School's Summer Fete will take place on Saturday 6 July 2024 from 12 noon until 4pm. If you would like to be involved and/or have your own stall for your charity or business, please get in touch with the Friends of Stonesfield School (FoSS) via email to sarah@fossteam.org.

Sarah Lydiat

Charity Bike Day

Saturday 13 July at Stonesfield Playing Field 2-11pm.

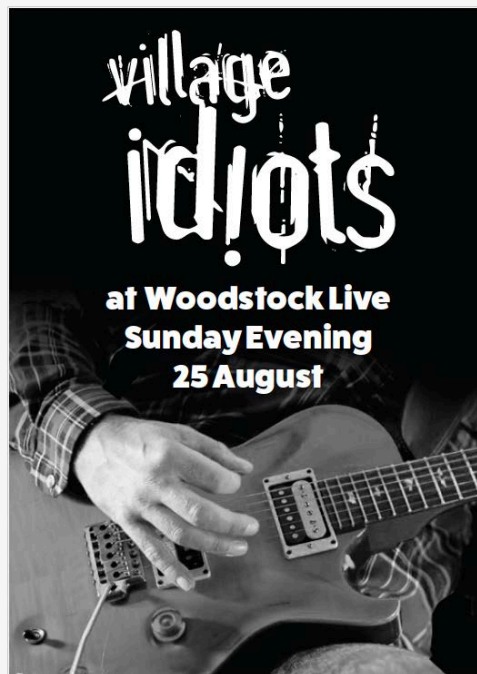


Put this date in your diaries, please join us and bring your bikes and families. This is a free event but we will be making a collection in aid of the British Heart Foundation, Cancer Research and several local charities.

Bands will be playing throughout the event so bring along your dancing shoes. Food will be available and the Social Club will be open for drinks.

We are hoping this year that the weather will be kinder so we can all enjoy a great day.

The Organisers: Andy, Roger, Fred & George



Keep up the great work!

Would you like to borrow the Stonesfield Parish Council (SPC) litter pickers and help keep the local environment litter free?

SPC have 11 litter pickers available for all Stonesfield residents to use whilst out litter-picking. To book the litter pickers, simply:

- Email, text or call Jess Huband on jesshuband@hotmail.co.uk or 07970 107805 to check availability and arrange collection. (Please allow at least 24 hours' notice.)
- Collect the litter pickers (and bin bags, if required) from 5 Busby Close.
- Whilst litter-picking, please wear (if possible) a hi-vis tabard and gloves.

- After your litter pick, please return the litter pickers to 5 Busby Close.



Litter picking on Stonesfield Straight - Easter 2024

What do you do with the litter collected?

- Please sort the litter collected in to your appropriate household recycling and rubbish bins
- Large or hazardous waste items should be left where found and reported directly to West Oxfordshire District Council (WODC) via: Fixmystreet: www.fixmystreet.com or WODC: www.westoxon.gov.uk or 01993 861000

Please **do not** leave bags of collected litter next to the village waste bins. (This is considered fly-tipping!)

Thank you for helping to protect our environment and keeping Stonesfield tidy!

Jess Huband

Bridewell Gardens: Open Day 9 June

Bridewell's walled garden and organic vineyard will be open on 9 June 11am-4pm. Learn about Bridewell's work, gardening and working with nature to support people who have experienced serious mental health issues.

There will be a pop-up cafe in the garden for tea and cake. High quality plants will be on sale along with home-produced jams and chutneys, and our acclaimed organic



sparkling wine. Make a day of it and bring a picnic blanket and relax in the vineyard with friends and family. Dogs on leads are very welcome and families and children are encouraged to explore the site. No booking is required and there is a suggested donation of £5.

Bridewell Gardens, Wilcote OX7 3DT
www.bridewellgardens.org

Combe Mill ‘In Steam’ Environmental Day

Combe Mill is a late 19th Century Grade II listed water mill on the River Evenlode which, in its day, was the workshop for the Blenheim Palace estate.

Combe Mill steaming events are well under way, we are now looking forward to our next event on 16 June which is a themed ‘*Environmental Day*’.

The Mill will be open ‘In Steam’ with all machinery working and being demonstrated by our volunteers. The Tea Room will be open for refreshments which can be enjoyed in the picnic area by the Evenlode. There is a mini-market to browse, a barbeque, gift shop and tombola. Dogs on leads are most welcome and parking is free. Admission charges for ‘in steam days’: adults £9, seniors £7.50 and children free.

Self-guided tours: Combe Mill is open every Wednesday until the end of October for self-guided tours. Tea room is open. Admission: adults £5, seniors £4 and accompanied children free.

Margaret Gruber
Blenheim Palace Sawmills,
Combe, OX29 8ET
www.combemill.org

Combe Women’s Institute

WI Membership is open to all women over the age of 18 years and this year the annual membership subscription is £48. Throughout the year there are 11 monthly meetings with a range of interesting speakers, outings and social events.

Meetings are held on the second Monday of each month in the Reading Room,

Combe, from 7.30-9.30pm. Guests are charged £5 per meeting (maximum of three visits per year as a guest).

Please call or email me if you would like further information about the WI.

Julia Sharpe,(891058)
Secretary, Combe WI
combewi@oxfordshirewi.co.uk

Healthwatch Oxfordshire Share your experiences of leaving hospital

Have you, or an adult that you look after, stayed in hospital during the last 12 months? If so, Healthwatch Oxfordshire would like to hear from you! The county’s independent health and social care watchdog would like to hear about your experience of leaving hospital, and any care and support you got in the first few weeks afterwards.

Healthwatch Oxfordshire would particularly like to understand what worked well and what could be improved, so it can help shape the support people receive when they leave hospital. The survey also includes an option to leave your contact details so that Healthwatch Oxfordshire can get in touch with you for a more in-depth conversation about your experience.

If you would like a paper copy of this survey to complete, would like it in another format or language, or would prefer to speak to someone about this, please contact Healthwatch Oxfordshire on 01865 520520 or at: hello@healthwatchoxfordshire.co.uk

For more information about this work see: www.healthwatchoxfordshire.co.uk/news/leaving-hospital

Politics & local affairs

Stonesfield Parish Council

From the Parish Clerk

Stonesfield Parish Council would like to share that Councillor Jim O'Brien has stood down as a long standing councillor. We would like to thank Jim for everything he has done for the village and council over the 24 years he has been a councillor. He will be very much missed by the Parish Council.

At the annual meeting of the council on 8 May no Chair was elected. A parish council is not legally constituted without a chairman. Someone must take on the role, or the council cannot function. This is implicit in the Local Government Act section 14(1). If no chairperson can be elected the meeting cannot continue beyond this agenda item. Although the Chair has no power to make decisions alone without the resolution of the Council, a council without a Chair is also legally unable to make any decisions. For clarity, at this moment in time council cannot adopt, sign off any policies and no resolutions can be made (this may impact our working groups who are Parish Council led – SAFER and Neighbourhood plan).

The council will attempt to elect a Chair again in a meeting in June – date to be confirmed.

Vacancies: The council can confirm there are two councillor vacancies at the moment. The latest one (following Jim O'Brien resignation) has been advertised by WODC, the other vacancy has

previously been advertised and has been open for some time. We encourage residents to come forward to become councillors.

In addition to the councillor vacancy there is a clerk vacancy following the resignation of the Parish Clerk, we are looking for another experienced clerk to fill this part time role. Full details and advertisement of this will be published but do reach out to the current clerk for further information if this is something you may be interested in.

Annual Parish Meeting:

The outgoing Chair – Cllr Phil McArdell presented this report at the Annual Parish Meeting on 8 May.

Chair's Report 2023/24 'I would like to start by thanking the clerk and councillors for their contributions over the last 12 months. The Councillor role is a voluntary role and your time and commitment is appreciated and without which the village of Stonesfield would not be able to function. I would also like to take this opportunity to thank and recognise Jim O'Brien, who has sadly resigned as Parish Councillor after 24 years. This is a phenomenal contribution to the village of Stonesfield. While we will miss your sense of humour during meetings, the biggest loss will be your behind-the-scenes work - talking and listening to the parishioners.

Financially, we have had a healthy year, and have been able to financially support numerous organisations around the village including the Septembeerfest, Food Bank,

the Church, Stonesfield Mutual Aid, Playing Fields Association and the Scouts. As well as continuing to support the SAFER Road Safety team and maintain Stonesfield Common.

The Neighbourhood Plan Sub-Committee has also been progressing well towards the goal of a Neighbourhood Plan for Stonesfield by this time next year.

Most importantly I wanted to mention the re-opening of the White Horse pub and thank all who helped make this dream a reality – in particular the Back the White Horse team.

The thing in common with all of the organisations and sub-committees I have mentioned above, and from the many groups represented here tonight, is that they are run by volunteers. And in today's demanding society, where volunteers are hard to come by, I would like to thank you all on behalf of the council for making Stonesfield a special place to live.'

The full minutes of the APM will be published online. Thank you to those of you who attended the meeting, over 60 members of the public came along.

Date of Next Meeting: TBC

Karen East, Parish Clerk
clerk@stonesfieldpc.uk

West Oxfordshire District Council

West Oxfordshire Alliance continues the partnership administration at WODC.

Following the local elections on 2 May, the governing alliance of West Oxfordshire District Council has reinforced their commitment to working together in leadership of the Council for the next 2 years.

The Liberal Democrat, Labour and Green groups agreed to form an administration to run the Council in 2022 known locally as the 'West Oxfordshire Alliance'. This included an Executive made up of councillors from each of the three parties that have run the Council over the last two years.

At the local elections on 2 May 2024, no single political party gained an overall majority. A total of 25 of the 49 seats are required to form a majority and no one individual party reached this number.

Councillor Andy Graham, Leader of the Council, said, 'I am really pleased that this strong alliance of councillors from across the political spectrum will continue to deliver the best for West Oxfordshire. It is incredibly important to me that we maintain the stability that we have built over the last two years, and we remain committed to delivering on our ambitious council plan for the benefit of residents and businesses in our district'.

West Oxfordshire District Council
Communications Team
communications@westoxon.gov.uk

Oxfordshire County Council

Oxford United Stadium: ‘Heads of terms’ have been agreed between Oxfordshire County Council and OUFC for the lease of land near Kidlington owned by OCC and proposed to be the site of OUFC’s new home. A number of other key legal and partnership agreements still need to be made, including planning permission from Cherwell District Council and the production of a net zero carbon plan.

Boost to cycling: OCC has approved its map for a ‘Strategic Active Travel Network (SATN)’. The map has straight line walking and cycle routes between settlements in Oxfordshire and towns/villages in neighbouring counties.

Mission to eliminate road deaths: A package of measures aimed at eliminating deaths and serious injuries on Oxfordshire’s roads by 2050 (‘Vision Zero’) have been approved. Every 2 years there are approximately 30 deaths and 245 serious injuries on Oxfordshire’s roads. The programme has £4 million in funding for projects to be delivered by 2026.

Community transport grants

2024-25: OCC is inviting parish/town councils to bid for community transport grants from a pot of £150,000. Last year, Watlington Parish Council was awarded a grant for a transport study. Applications from successful bidders in 2023-2024 will not be considered, to give opportunity for other areas to benefit.

Road closures: As we approach the summer season, we will see increased work to the road network. You can keep up to date with One Network and OCC’s map tool for major highway maintenance.

Household Waste: HWRCs will no longer be open Thursday evenings

Andy Graham

Your County Councillor

andy.Graham@oxfordshire.gov.uk

Neighbourhood Watch

We are still having vehicles stolen ranging from Range Rovers, Land Rovers to high performance cars. Advice for owners is to put keys in a Faraday pouch (this can be bought cheaply from the internet) and keep keys in a metal tin indoors.

With the weather becoming warmer, we need to remind people to make sure their windows are closed when they leave their homes. Finally, a survey is being carried out for Woodstock and surrounding villages to see which are our priorities.

Information on Neighbourhood Watch is available at: www.ourwatch.org.uk/

Anyone interested in joining the Neighbourhood Watch Scheme may find details and register at: www.member-registration.neighbourhoodalert.co.uk/30/join. Clicking on ‘Join a scheme’ and selecting ‘Stonesfield’ will complete the request.

Deanna Asplundh

Stonesfield Neighbourhood Watch
Coordinator

Oxfordshire County Council Impersonation Scam

We have learned of a new scam which is affecting older people in Oxfordshire. The basis of the scam is that someone calls saying they are from the County Council and are completing a means test as part of a care assessment. The 'assessment' is completed on the phone and at the end of it the caller asks for a fee of £150. We know of one person who has experienced this but scammers make their living from doing these kinds of things over and over.

Please be vigilant to such things. Means tests are a standard part of a council assessment which make this approach particularly credible. If you have any concerns please call the Oxfordshire County Council Adult Social and Health Care Team on 0345 050 7666 Option 2.

Stonesfield says 'Slow Down'*

*72% of respondents to the Neighbourhood Plan survey said that reducing traffic speed was important or very important.

Stonefield Community Speedwatch (CSW) is looking for more volunteers.

CSW is organised by Thames Valley Police as part of TVP's objective to reduce speeding and accidents.

You need to be able to give an hour or so a month, at times that suit you. You will be given full training and work as part of a group of three.

Email if you would like to volunteer to help your village or want more information.

SAFER@stonesfieldpc.uk

SAFER is a Stonefield Parish Council Working Group



Thames Valley Police

As part of our ongoing commitment to inform the public of the work we do, Thames Valley Police has released statistics on activity from the last financial year, from 1 April 2023 to 31 March 2024.

It has been another busy year with over 400,000 calls to 999, over 470,000 calls to 101, and over 108,000 online reports to our contact management centres.

We have attended 160,000 incidents, made 33,000 arrests, and helped find 5,687 missing people. On top of that, we policed the King's Coronation in Windsor, which was another of the most significant policing operations in the history of the Force, additionally we helped people to stay safe at many other events such as Reading Festival, Royal Ascot and Henley Regatta.

Police and community support: For information or advice on security concerns, please contact by calling 101 or woodstockNHPT@thamesvalley.pnn.police.uk

Woodstock Neighbourhood Police Team

Education, culture & more

Stonesfield Library

The Library (telephone 898187) is open as follows:

Monday	2.30-7pm
Wednesday	10am-12 noon
Thursday	2.30-5pm
Saturday	10am-12 noon.

Val Phillips (891455)

Friends of Stonesfield Library

Home Library Service

The Home Library Service is free and there is no charge for requests or late returns. To register for this service or for further information, telephone your local library or the Home Library Service on 01865 810259, or email homelibraryservice@oxfordshire.gov.uk

Deborah Wilson (898187)

Library Manager



Making the most of each and every moment

We have a fully extended childcare provision running from Pre-School.

Here is what is currently available:

Breakfast Club

Monday to Friday; 7.30 – 8.50am

(£7.10 per session) Cereal, toast and fruit juice included

Pre-School Sessions

9am – 3pm daily for children aged 2–4 years (£19.35 per session)

After School Club

Monday, Tuesday, Wednesday & Thursday; 3.15 – 6pm

(£18.00 per session)

If you would like registration forms for any of the above, please contact our administrator, Mrs Zena Rozee (tel. 01993 898012 or email: stonesfieldpsad@outlook.com)

Update from Pictures @ The Pub



At the time of writing, we are ten days into our Artweeks exhibition. We have had lots of visitors, 100-150 on some days, and some very appreciative comments on our artists' work. If you have not yet seen it or would like another look, there is the chance to do so on its last weekend - Saturday and Sunday 1 and 2 June.



We will then be mounting the Megalosaurus project undertaken by the children in Years 3-6 at the School and this will be in place through June until mid-July. Please come and see the children's work – they are very excited about having their own exhibition.

The new information board on the Megalosaurus, and the fossils and geology of Stonesfield, is planned for installation

during June. We are also hoping to host a geology-and-fossils walk-and-talk around Stonesfield this summer, led by the Oxfordshire Geology Trust, and more details will follow.

We are pleased to say that we now have a full programme of planned exhibitions for the rest of the year and monthly updates of 'what's on' and what is in the pipeline will appear in *The Slate*.

In the meantime, if you are interested in showing your work at The White Horse, please do get in touch:
trwynwil003@gmail.com

Trisha Williams for Pictures @ The Pub

The Stonesfield Spirit

What makes a community like Stonesfield so special? Since moving here in 2020 I have been truly inspired by the spirit of volunteering that personifies the residents of Stonesfield. The time, commitment, creativity and efforts of all our unsung heroes in the village should be celebrated.

As we approach National Volunteer Week 3-9 June, I wish to showcase our community heroes over the next three editions of *The Slate*. This month, as the new tenants open the doors on our community pub, it is fitting to reveal the monumental efforts by Claire Renshaw and her volunteer army to give us all a pop-up pub that raised profile, profit and pints as we sought our new White Horse tenant.

After a nearly 3 year battle, on 8 September 2023, our indefatigable volunteer committee finally took possession of the keys to our community pub. Hundreds of hours of work resulted in the win and immediately the next phase began. With a vision to open the 'pop-up

pub' on 29 September, Claire Renshaw, Julie Curran and the committee sent out a 'call to arms' to the residents of Stonesfield to make it happen. With true Stonesfield Spirit, the residents and local tradespersons responded, arriving in droves to assist with clearing out, cleaning, painting, building, plumbing, planting, polishing and PAT testing! New friendships were formed, laughter and memories shared, tea and biscuits consumed - all with one common goal, to make the opening deadline.



What an opening weekend it was, volunteers lining up to take their turn pulling pints, washing up and arriving with loaves of bread, delicious soups and cakes to die for! The community came together to celebrate our new pub, and still the volunteers kept coming tirelessly over the next few months, ensuring the pop-up pub was a great success.

As I thought about this article I asked Claire - 'what does this volunteer effort look like in numbers?' Our residents should congratulate themselves on their efforts because at the current count the volunteer army stands at 145 strong with a recorded 4450 hours of labour provided! Breaking that number down highlights the mammoth work and talent of our unsung community heroes:

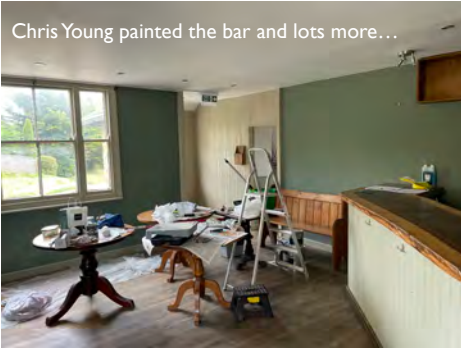
- 550 hours getting the pub ready for opening night.
- 2350 hours volunteering at the pop-up pub pulling pints, making and serving food, cleaning (beer drinking hours not totalled!).
- 600 volunteer hours for the revamp in early 2024 - not including the roof work by Neil Godfrey and his team.
- 200 hours for Art Weeks.
- 15 hours arranging flowers.
- 690 committee hours since purchase of pub.
- 130 litres of soup, 78 loaves of bread and 96 cakes made and delivered by volunteers.
- 50 hours of extras on curtains and upholstery.

The incredible Stonesfield Spirit of volunteering permeates all our residents; young and old alike stepped up to help bring the pub to life. Whilst I cannot list everyone involved, there are a few special individuals and groups that need to be highlighted for their involvement in the pub's revamp and success.

The Stonesfield Gardening Club volunteers have transformed the White Horse garden from a wilderness into an oasis. It looks amazing and the guests love it.



Chris Young painted the bar and lots more...



Behind the scenes, true unsung heroes are Chris and Alison Young, from the first day scrubbing the kitchen to building the new interim cellar and serving food most weekends, they have been integral to its success. Special mention must also go to Claire's daughter, Mould, every weekend there she was at the bar creating gourmet coffees in 'Charleston' the coffee machine!

Assembling and painting the new benches



On behalf of the whole community I would like to say thank you to Claire Renshaw for her tireless efforts to make the pub so successful. Her drive and vision ensured its success and the final words regarding the White Horse volunteer army are hers (sent out 1 January 2024 via whatsapp and printed with permission):

'A huge huge thank you to each and everyone of you that helped make the pub a success over the past few months. I had a vision but it wouldn't have been possible

without you all, from baking bread, cakes, making soups, organising the rota, cleaning, all the behind the scenes kitchen jobs, serving and bar staff to art work, our weekly flowers, Christmas decorations and decorating, the gardening club, handyman jobs, and many more!! You all made it happen!!! But also a huge thanks to our star barista and my right-hand support Mould'.

As a community we are blessed to have such a wealth of talent and creativity among our residents, but more than that, our residents embody the Stonesfield Spirit by stepping up and offering their time to support and help others. Next month I will be showcasing the incredible efforts of our volunteers that support activities at the Village Hall, Sports and Social Club and Playing Field.

Fiona Dangerfield

Editor

P.S. See pages 32-33 for more pictures of the transformation

I'm a Reader

Susan Rudlin, 56, is a food scientist. Every quarter, she runs the Community Café, in the village hall, where the door to the library is open, for villagers to feast on books as well as homemade food.

Susan moved to Stonesfield aged six, where her grandparents were already living legends. "Olive, my gran, started a play school in the village hall that became the pre-school and Gordon, my granddad, started The Slate, pre-computer era, in his study.

My earliest reading memories are at my gran's, she had a whole drawer of Ladybird books (which we still have). I loved the

fairly tales - *Cinderella*, *Snow White*, and *Beauty and the Beast* - I am the sad muppet that loves a happy ending; I couldn't imagine any girl that didn't want to marry the prince. No one talked about the patriarchy in those days.'

Susan attended the village school, but it was the move to secondary that turned her into a library lover. While all her primary school friends went to the school in Charlbury, Susan was sent to The Marlborough, which meant making new friends: 'I was completely unprepared. It was very painful. We didn't watch TV at home, so I had no idea...kids can be very cruel.'

'The school library was a sanctuary for me. Nell Haines, from the village, a friend of my grandparents, worked in the library office, and trusted me to cover book jackets with sticky backed plastic. I virtually lived in the library, it was warm and welcoming.

'I rinsed through Agatha Christie – I loved Miss Marple, so shrewd but so easily overlooked by the dastardly doer.'

Susan's attraction to Jane Marple is perhaps no coincidence, since she overlooked her own talents in her school days, and, like Miss Marple, is a late bloomer. By her own admission, Susan 'bombed at school', yet now she's working on a PhD. How? After 25 years as a business facilities manager, a legacy from her grandmother in 2009 afforded her 'the greatest gift, a chance to do something different'. Knowing Gran would have approved, Susan started studying science at the Open University. She focused on chemistry. She achieved a BSc, an MSc and now is working through a PhD in Food Science at Reading University. 'As a funded PhD student, I have to spend an enormous

amount of time reading scientific papers. I'm researching the house cricket (*Acheta domestica*) and working out how to incorporate them as a powder into other foods. If the world population continues growing, we're going to need sustainable sources of protein, and this could be one of them. I can hear all your stomachs churning in disgust but, even though it's a member of the shellfish family, rest assured we don't serve them at the community café...yet!'

Susan still loves to escape with a story. 'It's always fiction, I want to read and be swept up in a story, not analyse every word on the page. I thought perhaps I should read some classics, so my latest read is Stella Gibbons' *Cold Comfort Farm*. Eleanor told me it's a spoof.' (Susan means me, your trusty interviewer.) *Cold Comfort Farm* is a brilliantly funny 1932 pastiche novel, telling the doom-laden rural tale of the cursed Starkadder family. But I fear for Susan, a scientific empiricist, the humour is too leftfield. 'Flora (the bossy heroine) annoyed me and *why* don't I know what Ada Doom saw in the woodshed? Give me a book that wraps things up neatly!'

Eleanor Bailey

Sustainable Stonesfield

If you want to help make sure that potential housing developments in Stonesfield meet any need for affordable housing without spoiling our priceless rural character, please consider joining Sustainable Stonesfield. No fee, no hassle, just get alerts and information. There are already 170 members who have joined because they want to hear the latest news and help if they can. Write to us at sustainable.stonesfield@gmail.com

Nature Notes: Swifts return



A returning swift.: Amanda Miller

Favourable weather conditions meant that the swifts returned to Stonesfield around the expected time with a notable arrival from 6 May. This was in contrast to last year when persistent northerlies disrupted their return. It was wonderful to see them over the village and hear that call again. Stonesfield swift conservation continues with thirteen sites added with possibly up to another eight to be installed and further jobs pencilled in for the autumn. Thank you to everyone who requested sites.



Juvenile swift in Stonesfield 2023: Paul Wren

Last year I noticed swifts around the White Horse. After speaking to Steve Callaghan, he agreed to retain this natural site with just a tidy up of the entrance and also gave the go ahead for two S-Bricks and a box. I'm grateful to Steve for this and my thanks to Neil Godfrey for installing the bricks and nest hole. It was very pleasing to see on 16 May two swifts enter the

modified nest hole showing that if people work together nest sites can be saved.

Even though there's always more that can be done it seems for now that the future of the swifts in Stonesfield is positive.

Paul Wren

pmwren52@gmail.com

Shakespeare at Sarsden Glebe

Six weeks to go until Much Ado About Nothing at Sarsden Glebe on Friday 21 and Saturday 22 June. The students at the Oxford School of Drama are well into their rehearsals under the directorship of Cordelia Monsey. The mainstay of Cordelia's career was working with Sir Peter Hall and his company as an assistant director. So we are in for a real treat. We do hope you can join us.

To book tickets, please respond to glebevents@hotmail.com as mentioned on the invitation.

Rupert and Amanda Ponsonby

MUCH ADO ABOUT NOTHING

At Sarsden Glebe



Students of the **Oxford School of Drama** will be performing local man William Shakespeare's play **Much Ado About Nothing** in the garden at Sarsden Glebe, Churchill, OX7 6PH on:

- ❖ Friday 21st June: Doors open at 5.00pm for drinks on the lawn. Performance will start at 5.45pm.
- ❖ Saturday 22nd June: Doors open at 4.00pm for tea on the lawn. Performance will start at 5.00pm.

Tickets £20.00 per head.

All proceeds go to the Oxford School of Drama Hardship Fund.

Please RSVP: Glebevents@hotmail.com with your request for the number of tickets required and the evening you would like to attend. Confirmation of tickets and payment details will then be sent to you by email.

The performance is 'Open Air' so please do wear warm weather-appropriate clothes. Chairs are provided. You are welcome to bring a picnic (if you wish) to eat in the garden after the performance.

For any further information, please contact glebevents@hotmail.com or call Amanda Wordsworth on 07879 818620

Stonesfield heritage orchard

This is the developing plan for the heritage orchard. We have had considerable advice and discussions getting us to this point. We will apply for funding in June.

Rabbits are numerous and we will apply for a two bar fence with rabbit netting. A gate and also an information board. The trees will have a guard and support.

The site will be managed for the wildflowers and you can see the plan for a path for access and an area for seating. Currently we are deciding on the choice of apple trees. A range of cooking and eating apples that ripen over the apple season from August through to December.

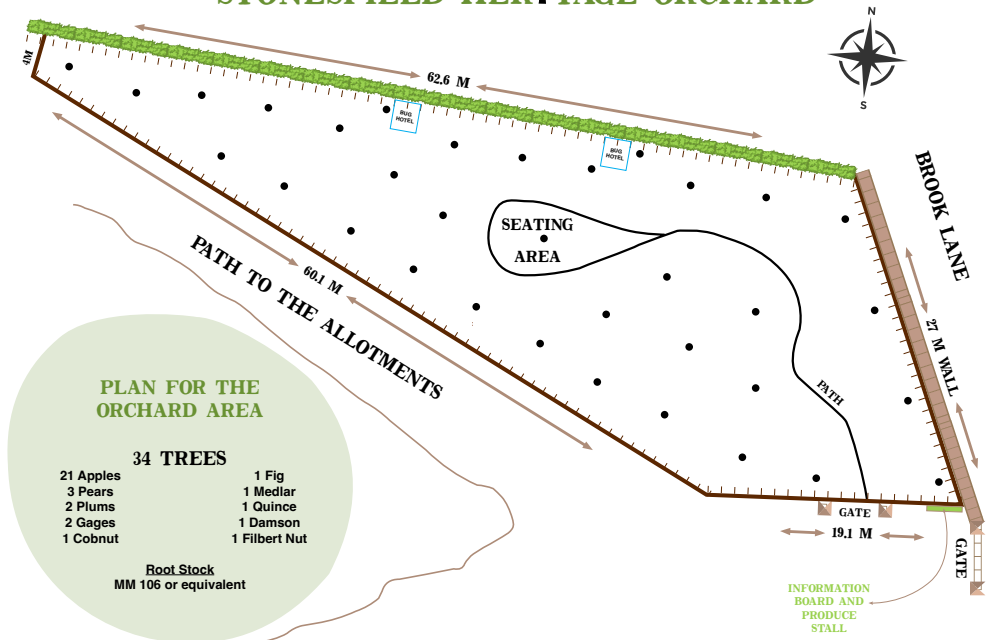
Please get in touch if you would like to be actively involved. We will provide more details once we know about funding.

John Sampson

john.sampson9@btinternet.com



STONESFIELD HERITAGE ORCHARD



As I was a-walking

On Saturday 18 May we went to FarmED for a performance walk as part of Chipping Norton theatre's 50th anniversary programme. It was a short walk punctuated by six performances, an opportunity to try straw crafting and a talk from Ian Wilkinson, the co-founder of FarmED.



Paul Ansdell reading from *Lifting the Latch*

We started with extracts from *Lifting the Latch*, the book by Sheila Stewart, which details the life of Mont Abbott, an inter-war years Enstone farm worker. Then on to readings of Romola Parish's poetry. Romola used to be a Stonesfield resident before she moved to Wales and will be remembered for her readings at many Stonesfield folk evenings. We were treated to extracts from *Lark Rise* by Flora Thompson and *The Village News* by Tom Fort, reflecting the change in characters of

an Oxfordshire village, followed by a spirited enactment of part of Michael Morpurgo's *Farm Boy*. Michael is more famous for *War Horse* but this sequel is equally fascinating and will be performed in full next spring by Chipping Norton Theatre.



Louis Thurman and Josh Newman

Music and song were provided by Louis Thurman and Josh Newman from The Oakstone Trio and, finally, from Opera Della Luna.



Opera Della Luna

This was followed by an opportunity for lunch at FarmED's excellent café which is normally only open Monday – Friday.

Paul and Diane Bates

STONESFIELD VOLUNTARY TRANSPORT SCHEME

Our volunteer drivers are available to take you to local medical appointments or to the hospitals in Oxford and Banbury.

We make no charge but welcome a donation towards expenses. COVID safety precautions are still in place, if you need them.

Please call or email to book transport in June:
Viv Kendall 01993 891803 or stonesfieldvts@gmail.com

Clubs, societies & sport

Stonesfield Gardening Club

Our May meeting was a very jolly talk from garden writer and lecturer Val Bourne. She is a lifelong gardener herself and passionately interested in organic gardening, which she has always practised. She now feels that the gardening world is beginning to catch up, with more and more media and print garden writers espousing the no-chemical way of life. This was kick started by EU research into pesticides in the early 2000s which in turn led to many popular products being banned from the garden centre shelves, due to their adverse effect on insects. We all know how important insects are to our bird life, but she made us see the intricate web of different species of insect that all rely on each other to thrive. Next time you see aphids on your plants, look to see what other insects are also there, using them as fodder!

Her main tips are to diversify your planting – trees, shrubs, perennials and annuals all have a different part to play. Secondly, think ‘right plant, right place’ and make sure your plants are happy where you’ve put them.

She also advocates planting densely with lots of ground cover, which helps protect wildlife. Early flowers are very good for solitary and bumble bees and our hawthorn hedges, so prevalent in the village, can attract up to 149 different species of insect. While hazel has 79 regular visitors and apple trees 93. The main take away was that we need to be

very careful in the garden even if we get fed up with a few plants being nibbled!

June will see our biennial Open Gardens event, this year on Sunday 23 June from 2 to 5.30pm. Tickets will be on sale at the St James’ Centre, where we will also be selling teas. Anyone wishing to help out with cakes or staffing on the day please get in contact.

Diane Bates

Secretary Stonesfield Gardening Club

www.stonesfieldgardening.info

diane@bateshome.co.uk

Stonesfield Scouts

The return of the better (!) weather has meant that Beavers and Cubs have moved back outside to join the Scouts in enjoying the countryside. The Beavers in particular have been very busy with loads of events, including making clay gargoyles, learning how to safely light fires, lighting fires, cooking on fires, building dens, etc. There will also be a local village litter pick coming soon, and we are keen to be involved with the community as much as we can. Looking ahead there are plans for summer activity camps involving climbing and caving. The Scouts have been testing their pioneering skills by putting up A frames and racing each other to move these enormous structures across the school playing field.

It was very rewarding to see so many of our young people at the County Awards ceremony. Whilst there were lots of Chief

Scout's Bronze and Silver awards to Beavers and Cubs who have completed the core badges in their sections over two or three years, it was the three Gold Award recipients who have been with the group all the way through that deserve special mention. Tate, Lyra and Chloe have been great representatives of the Scout Group and we are proud to see how they have gained, and given back, to the group over the years. Well done!

If you want to be involved then joining in has never been easier. We offer lots of support and help, and it really is a fun thing to do. It can be as much or as little as you are able to give, but you too can be part of this 75 year old Scout group.

The Duck Race returns... The annual Stonesfield Scout Duck race will return on 13 July from 5pm. Please come and support our local group, buy a few ducks and enjoy our BBQ. This is always a lovely event to mark the start of the summer holidays. Ducks will be for sale from outside the shop, from any of the Beavers, Cubs or Scouts or from our special duck race website - just search Stonesfield Scouts Duck Race (or go to stonesfieldduckrace.square.site)

Scout Hut Shopping List - could your company help? As you hopefully know, we are in the middle of building the Scout Hut. Work is going on at pace and you can follow the various updates on our website. We have also just started another round of fundraising. This is so exciting and we hope to welcome the village to have a look round when we get a little nearer completion of the first phase later on this year.

We have enough funds to get us to build the shell of the hut, but we are looking for



Hut foundations in place

direct support from local individuals and organisations. We have a shopping list of items ranging from £500 to £5000 and we are looking for help to get everything on the list! From flooring to lights, it is all available. Contact chair@stonesfield-scouts.org.uk for info. Follow our story on Instagram (@stonesfieldscouts), Facebook (facebook.com/stonesfieldscouts) or www.stonesfield-scouts.org.uk

For more information, please see our website, Facebook or Instagram page by searching for Stonesfield Scouts.

If you want to get in touch with us, please email

Ben (chair@stonesfield-scouts.org.uk)
Gary (gsl@stonesfield-scouts.org.uk) or
Paul (scouthut@stonesfield-scouts.org.uk)

Ben Whitworth

earn your building badge

Scouts
1st Stonesfield

The Hut is coming and we need your help
Electric's. Plumbing. Flooring. Painting.
Shelving. Landscaping. Fundraising.

You name it, count us in.

Give time or materials
chair@stonesfield-scouts.org.uk

Stonesfield Football Club

If you know your history, you'll be aware that Stonesfield won The Fred Ford Memorial Cup way back in 1964, yes 60 years ago! Having waited all this time for another appearance in the final, you'd think that they'd be patient while the authorities sort out who their opponents will be after Enstone protested against Charlbury fielding an ineligible player in their semi-final. Our boys are indeed impatient as they fear that the longer this saga drags on the more unlikely that the final will be played this season: what a farce! Meanwhile, they crashed out of The Ted Young Senior Cup in the quarter-finals at Hanborough (2-1). In the league they've had mixed fortunes losing at home to Charlbury (1-3) but won a 7-goal thriller, also at home against Enstone (4-3). With just one league game to play they can't finish any higher than 6th. Fingers crossed that the Fred Ford Final goes ahead before June and that our boys land the silverware!

The Reserves also made it to a cup final! This time it was The Hughes Supplementary Cup which they won 63 years ago and what a journey they embarked on to get to it! In the 2nd round they won (2-0) at Heyford Athletic, setting up a thrilling quarter-final against Leaffield. The game ended in a 2-2 stalemate, but our boys proved deadly from the spot, winning the penalty shoot-out (4-2). In the semi-final against Sherbourne Harriers they looked dead and buried but recovered from 2-down, equalising with the last kick of the game. Again, it was decided by the tense drama of penalty kicks. Player-manager Ben Franklin sparked mayhem in the Stonesfield ranks as he scored the winner (7-6)! A fairytale ending beckoned in the final against Tower Hill, but despite our

boys taking the lead in the first minute, it wasn't to be. It could've been 2-0 after 25 minutes but they missed a penalty kick (no names, no pack drill), though in hindsight it might've been wiser if it had been taken by an 'old head'. After a tightly fought match Tower Hill finally won it (2-1) with a penalty and a clever free-kick. Hopefully our boys won't have to wait another 63 years to win it again. In the league they performed well against the top two sides, Deer Park (Champions) and Aston, losing 2-1 and 2-0 respectively. Their final home league game against Faringdon Town 'A' was another goal-fest which they eventually won (4-3)! It's been an eventful season for The Reserves, they've done well.

Finally to The Fredo Award: I overheard two old codgers chatting at the end of the Reserves' Cup Final who remarked that, had it not been for the keepers, it could easily have been 8-6 to Tower Hill. Stonesfield's keeper, Max Quartley, had a great game making some stunning saves. So, the old codgers called it: step forward, young Max, this month's Fredo Award winner!

Tom Flanigan (891979)

Stonesfield Players Safari Supper

Saturday 6 July at 7 pm

The Stonesfield Players are holding another Safari Supper. Do join us for an evening of gastronomic delights and lots of fun all mingled with a wander around the village to a different venue for each course. The evening will begin at The Old Bakery, Boot Street and throughout the evening you will enjoy a four course meal ending together with cheese and biscuits. All are welcome, we need guests and hosts, if anyone is interested in hosting please contact Ros.

Attendance is by booking only. Tickets are £18.50 per person and can be booked with Ros Mengech by Saturday June 29th.

Ros Mengech (07852 584688)
ros_mengech@yahoo.co.uk

Stonesfield Players to Wychwood Players

Peas and The Extraordinary Revelations of Orca the Goldfish - Theatrical Soirée with Canapés

Three members of the Stonesfield Players are contributing to a Wychwood Players production by producing *Peas*, one of two short plays by award winning playwright, David Tristram, shown together and with a selection of canapés to be enjoyed during the performance.

Peas is a delightful, comic exploration of a blind date set in a local pub. Will the couple find anything in common at all?

The Extraordinary Revelations of Orca the Goldfish reveals the boring lives of Henry and his wife, Alice, may not be quite as dull as they seem! *Orca* bears witness to

a frolic through the pair's fantasy world in this hilarious, sparkling comedy. Adult themes and moderate language.

This promises to be a sell out event so book early to avoid disappointment!

Performances daily at 7.30pm from Thursday 20th - Saturday 22nd June at The New Beaconsfield Hall, Shipton under Wychwood, OX7 6BQ. Bar available. Tickets £15 from www.wychwoodplayers.com. Please note, tables and seats for this production will not be allocated.

Stonesfield Players Auditions for November Production

On Sunday 7 July at 2pm at the St James' Centre we will be auditioning for parts in our November production (see below). Ages from 10 to 100 are welcome.

Raiders of the Lost Valley by Becki Sherlaw-Johnson

Some of you will remember *To The Ends of the Earth* (an *Indiana Jones* spoof) which we liked so much we did twice. Now comes the sequel. Once again our plucky hero and his companion seek to save the world from evil forces and their quest takes them all over the world. Comedy and songs abound in this *Indiana Jones* meets 'Allo 'Allo spoof. There are spies, flamenco dancers, evil henchmen, ghosts and many more. Opportunities for main parts, cameos and chorus, so something for everyone.

The performance dates are 22 & 23 November. If you want more info or cannot make the audition but want to be considered for a part please contact me.

Becki Sherlaw-Johnson
rebeccasj@btinternet.com

Stonesfield Sports and Social Club

If you are new to the village or just want to try something new we have plenty of things going on. We have dominoes on alternate Tuesdays - pop up on the night and I'm sure someone will be keen to show you how it works from 8pm.

Something to keep your brain active with the Quiz every Wednesday, teams of up to six people, 8pm start and £1 per person. Our pool league starts again in June, the lads are currently practising every Monday night and are always happy to sign on new players, or sit in the sun and watch the Oxfordshire game of Aunt Sally every Thursday, as well as the Band nights, bingo and other events listed in the dates section.

With the Crawford Cup starting soon on Friday nights, our amazing pizza man is going to be very busy so we recommend ordering via WhatsApp or phone early.

We are also happy to accommodate birthday parties, fundraisers and other events, come in and see us or contact the social club on 01993 891359.

In June, we will be showing UEFA Euro Football on the big screen; dates of the games will be published on our Facebook page.

Thank you for your continued support - we look forward to welcoming you over the summer.

Stonesfield Sports and Social Club

Stonesfield Food Group

Emergency Food help: One of the aims of the Food Group is to support Stonesfield residents who are struggling to afford nourishing food. We are able to do this using the funds raised by the Community Cafés run alongside the Repair café, and through other generous donations.

We are currently able to offer food parcels or emergency supermarket vouchers. If you, or someone you know, could benefit, contact Kate Harris, on 01993 898781 or via email at kateharris58@yahoo.co.uk.

If you are able to, you can support the food parcel initiative by donating tinned meat pies, hotdogs, meatballs, chicken, or ham. They can be left in the brown box on the doorstep of 6 Brook Lane.

Repair and Community Café: See p 5.

Seniors Café: Held on a Tuesday, from 3-4pm, this is a friendly group which all are welcome to join. We meet in the Village Hall Club Room and enjoy hot drinks and home-made cake.

Stonesfield Social: After the Seniors Café, the Club Room turns into the venue for Stonesfield's Social meal, running from 5-6.30pm. Guests range from small babies to more mature guests who are served with a nutritious two course meal. All are welcome and we cater for vegetarians as well as meat eaters. If you have concerns about allergies, you can check the menu on our Facebook page the day before, or if you're not a Facebook user, contact Julie Curran to ask about the current week's menu.

We source much of our food from the Oxford Food Hub, to whom we are very grateful as they contact a wide variety of

food suppliers across Oxfordshire to rescue good food which would otherwise go to waste. The quality is unbelievable, and the food is often not even close to its 'best before date' but has simply been oversupplied. Our volunteer cooks turn this into delicious meals. Many of our Social meals have saved over 30kgs of food in a session!

If you would like to join the friendly team, please get in touch with Julie to discuss how it works.

Julie Curran, Co-Chair, Stonesfield Village Hall
juliecurran0@gmail.com

Stonesfield Environment Group

You may remember the article a few months back about Riverfly. Looking at the numbers of Riverfly in the Evenlode is a key indicator of the health of the ecosystem. Monitoring the Riverfly population and reporting any changes to the Riverfly population is one of the really crucial metrics that the Environment Agency will react to. A number of us, three at present, are trained in Riverfly sampling. It is a fascinating process, so if you see us in the shallows kicking about in the river, you will know what we are doing. As part of our aim to get a picture of what is happening along the length of the Evenlode, we are working with groups and individuals in our neighbouring villages to coordinate our testing and sampling. This will give us better data, more 'clout' when it comes to showing the impact of the pollution of the river.

You may also have seen in the news, the new Bathing Status sites in the UK. This is a complex issue and it's not fully clear yet the merits in applying for Bathing Status but we continue to work with other groups, further ahead in this process to understand its relevance to us.

As ever, there is much to do, so if you want to get involved please join us.

Julie Curran

STONESFIELD LUNCH CLUB

Stonesfield Lunch Club meets every Weds 11 till 2 (for members) at the St James' Centre.

Lunch Club provides a social occasion, friendship and support for our more mature residents along with refreshments, activities and a freshly cooked 2-course meal each week.

Volunteers are always welcomed for many roles and this is a lovely way to be involved in village life. Contact me if you would like more information on becoming a member or in volunteering.

Kate Harris 01993 898781 or kateharris58@yahoo.co.uk

Church news

Stonesfield Methodist Church

Services for June

- Sun 2 11am To be arranged
Sun 9 11am Andrew Maisy
Sun 16 11am Jenny Bywaters
Sun 23 11am The Reverend Andrew Biggs

Holy Communion Service

- Sun 30 11am To be arranged

The rhythm of life!

Teach me to dance to the beat of your heart,
teach me to move in the power of your spirit,
teach me to walk in the light of your presence,
teach me to dance to the beat of your heart.
Teach me to love with your heart of compassion,
teach me to trust in the word of your promise,
teach me to hope in the day of your coming,
teach me to dance to the beat of your heart.
Graham Kendrick and Steve Thompson.

Come to a Service soon.

Kathleen Albért (891733)

Roman Catholic Worship

Some reflections (part 1) by Pope Francis on John Chapter 15, 1-11

I am the true vine, and my Father is the vinedresser. Every branch in me that bears no fruit he cuts away, and every branch that does bear fruit he prunes to make it bear even more. You are clean already, by means of the word that I have spoken to you. Remain in me, as I in you. As a branch cannot bear fruit all by itself, unless it remains part of the vine, neither can you unless you remain in me. I am the vine, you are the branches. Whoever remains in me, with me in him, bears fruit in plenty; for cut off from me you can do nothing. Anyone who does not remain in me is thrown away like a branch -- and withers; these branches are collected and thrown on the fire and are burnt. If you remain in me and my words remain in you, you may ask for whatever you please and you will get it. It is to the glory of my Father that you should bear much fruit and be my disciples. I have loved you just as the Father has loved me. Remain in my love. If you keep my commandments you will remain in my love, just as I have kept my Father's commandments and remain in his love. I have told you this so that my own joy may be in you and your joy be complete.

Jesus needs us, like the vine with the branches. Perhaps to say this seems audacious to us and so we ask ourselves: in what sense does Jesus need us? He needs our witness. Like the branches, the fruit we

must give is the witness to our lives as Christians. After Jesus ascended to the Father, the task of the disciples – it is our task - is to continue to proclaim the Gospel in words and in deeds. And the disciples - we, Jesus' disciples – do so by bearing witness to his love: the fruit to be borne is love. Attached to Christ, we receive the gifts of the Holy Spirit and in this way we can do good to our neighbour, we can do good to society, to the Church. The tree is known by its fruit. A truly Christian life bears witness to Christ.

Pope Francis, Rome, 2 May 2021

Holy Mass

Sunday Mass 9.15am

Weekday Mass

Wednesdays: 9.15am

Fridays: 9.15am

For Parish updates, more information and further support, please go to www.stteresaschurch-charlbury.com/ or contact Fr. Clive Dytor, Parish Priest: fr.clive.dytor@rcaob.org.uk

Aid to the Church in Need

Pilgrimage: Durham and Lindisfarne, 22-27 July 2024. For further information please contact Suze Mathews: suzemathews899@btinternet.com

Roman Catholic Community in Stonesfield

Church of England Worship at St James the Great, Stonesfield

(Benefice of Stonesfield with Combe Longa)

www.stonesfieldparishchurch.org

Rector: Rev Ralph Williamson, rector@scbenefice.org, 01993 891872

Churchwarden: Lindsey Sellar stonesfield@stonesfieldparishchurch.org

St James' Centre bookings: sjcsbookings@gmail.com

For any enquiries or help, including pastoral support, please do contact us.

From the Rector: Wisdom

I have always been fascinated by the three 'Wisdom' books in the Bible, which offer ideas about how to live well, and how to make sense of human experience. The Book of Ecclesiastes is rather philosophical, and includes the popular passage, 'There is a time for everything', as well as reminders to enjoy yourself while you are young, before the challenges of old age come along. The Book of Job is a long story about a man who had everything taken away from him, and received little comfort from his friends. It attempts to answer the question, 'Why do good people suffer?' The third of the Biblical wisdom books is Proverbs, an extensive collection of writings about how to live a life which is fulfilled, intelligent, prosperous, happy and just. Some of these Proverbs are reminders that a lazy person will never do well in life. The phrase, 'Go to the ant, you sluggard,' uses the industrious insect to inspire us not only to work, but also to work collaboratively with others, as a young child in a school assembly recently pointed out. Another proverb likens a lazy person

turning on their bed to an old door creaking on its hinges. Many other Biblical proverbs are about getting along with one another, treating others well, being a good friend or neighbour, or avoiding them if necessary.

A large number of these wise sayings have found their way into everyday usage, alongside more modern favourites like, 'All work and no play makes Jack a dull boy', 'A stitch in time saves nine', and the Shakespearean favourite, 'All that glitters is not gold'. But the Book of Proverbs makes the very serious point that wisdom, and the sort of knowledge which leads to a good life, comes from God, and is fully known to those who live with reverence for God and for all that God has made. As Christians we come to worship God together in church, humbly recognising that our life is God's gift, that new life is his gift in Jesus Christ, and that the wisdom to live well is the gift of the Holy Spirit. Please join us!

Rev'd Ralph Williamson

Church services:

Sunday 2 June [Second Sunday after Trinity]

8am	Stonesfield	Holy Communion [BCP/said]
9.30am	Combe	All Age Worship
11am	Stonesfield	All Age Worship

Sunday 9 June [Third Sunday after Trinity]

8am	Stonesfield	Holy Communion [BCP/said]
9.30am	Combe	Parish Communion
11am	Stonesfield	Parish Communion

Sunday 16 June [Fourth Sunday after Trinity]

8am	Stonesfield	Holy Communion [BCP/said]
9.30am	Combe	Parish Communion
11am	Stonesfield	Parish Communion

Sunday 23 June [Fifth Sunday after Trinity]

8am	Stonesfield	Holy Communion [BCP/said]
9.30am	Combe	Parish Communion
11am	Stonesfield	Parish Communion

Sunday 30 June [Sixth Sunday after Trinity]

8am	Stonesfield	Holy Communion [BCP/said]
9.30am	Combe	Parish Communion
11am	Stonesfield	Parish Communion

Wednesdays

9.30am	Stonesfield	Holy Communion (5th, 26th) Morning Prayer (19th)
11am	Combe	Morning Prayer (5th, 19th)

A record of recent funerals:

14 May: Samuel Miller

Our prayers are for family and friends at this time

Progress @ The Pub





May 2024



May 2024



best-one 

Suriya Express & Post Office

1 Pendle Court, Pond Hill, Stonesfield
Tel/Fax 01993 898379

Bread & Pastries
Fine range of Groceries
Fruit & Vegetables
Beers, Wines & Spirits
New range of Organic Products
Dry Cleaning

Opening hours:
Monday to Friday 7am–8pm
Saturday and Sunday 8am–8pm*
Bank Holidays 8am–8pm*

**P.O. closed on Sundays & on Bank Holidays*



All aspects of roof work undertaken

Slates • Tiles • Flat roofs
Chimneys • Valleys • Leadwork
Moss clearance
UPVC fascias • Soffits • Gutters
Advice and estimates free

Freephone
0800 955 5063

Mobile
07817 792194

WOODSTOCK TAXI SERVICE

07766 743081



TOWNHOUSE

EXECUTIVE TRAVEL

- Airports & Stations
- Day trips & tours
- Hospitals & Schools
- Weddings & Proms
- Theatres & Restaurants
- Shopping trips

Our friendly team includes female drivers

www.townhousewoodstock.co.uk



Katrina Moss Inner Peace Reiki

Treatment in the comfort of your own home
Level 2 Reiki practitioner
Treatment and public liability insurance
Reiki complementary healing can be
beneficial in many ways
Gift vouchers available

Please contact me for a consultation

07824 357690

katrinamoss1979@icloud.com

Need help with your garden?

*Garden maintenance and design
Planting, pruning and weeding
Advice for free*

Michelle Turkie

Please contact me

07531 717991

michelleturkie@gmail.com

JUNIOR TAE KWON-DO

The Korean art of Self-Defence

Develop your children's self-confidence, concentration and help them to learn respect for themselves and others.

New lessons developed to be fun and informative for ages 5-17.

Stonesfield Village Hall
Mon and Thur: 5.30-6.30pm

Come and try a complimentary session

ITF registered international instructor
James Kumar CRB vetted

Further information, contact James
01865 772883 07788 583 965
Jameskumar@hotmail.co.uk



Resilience
PILATES

Back or Joint Pain?

Pre or post operative rehabilitation?

Need to improve strength or fitness?

Feeling stiff and inflexible?

Address muscle imbalances, improve posture, develop your core and build fitness through individual Pilates sessions in our Stonesfield studio with reformers, tower, chair and more

Call Lucy on 07484901615 or email
info@resiliencepilates.co.uk



COTSWOLD GARDEN DESIGNER

- Looking to improve your outside space but stuck for ideas on how to make the most of it?
- Want somewhere to entertain?
- A space for your children to play?
- Or maybe you just need a quiet place to relax, a calming, scented corner, just for you?



I can provide a full garden design, planting plans or a simple garden report - some ideas of how you could best use your outdoor space and the types of plants that you like and would suit the environment.



CONTACT LORRAINE:

lorraine@cotswoldgardendesigner.co.uk
07516262560
www.cotswoldgardendesigner.co.uk

**Enjoyable and friendly
art classes**

Drawing and painting
Still Life

**For more information contact
gabrielekern31@gmail.com**

Sewing & Alterations

... to make that garment fit you!

Fittings, hem levels, and a varied range of alteration and sewing work carried out.

Dresses, Skirts, Tops, Shirts, Jackets, Trousers, Curtains, Cushions and beyond!

Louise Everett-Brown
lou.smiley1@btinternet.com
01993 813873



windrushgroup

print | design | web | large format

Celebrating our 50th anniversary, we have been delivering our print expertise to a wide variety of clients from the smallest personal project through to much larger organisations. We pride ourselves in delivering the same level of service for all.



01993 772197

Chris@windrushgroup.co.uk
www.windrushgroup.co.uk

Windrush Group, Windrush House, Avenue Two,
Station Lane, Witney, Oxfordshire OX28 4XW



BLINDS AND CURTAINS

by

WINDOW DESIGN

01993 870606

**Made to Measure
blinds and curtains**

**Complete home service
from measure to fitting**

Huge range of fabrics

**Fabric showroom open
by appointment**

WWW.WINDOWDESIGN.CO

M J Fyson BA BA VetMB MRCVS
The Coach House Veterinary Clinic Ltd
Wroslyn Road
Freeland
Nr. Witney
Oxon OX29 8AQ
E-mail: coachhousevet@outlook.com



We are a traditional independent small animal
Veterinary Clinic

- Opening hours: Mon-Fri 08:00-18:30, Sat 09:00-12:00
- Consultations by appointment only, please phone 01993 880551
- Friendly personal service for dogs, cats and small furries
- Stockists of Symply and Canagan pet foods
- Follow us on Facebook: Coach House Veterinary Clinic

01993 880551

www.coachhousevetclinic.co.uk



Rob Atkinson

Member of the
Chartered Institute of Building

General property
maintenance and
high quality DIY



General repairs
All carpentry - Decorating
Minor plumbing

Prompt, reliable and
recommended service
No job too small

Tel: 07876-275300

robatkinson.ajdw@gmail.com

"A job done well"

Roberts Garden Machinery Ltd



- Professional servicing and repairs of most makes of garden machinery
- New & second-hand machinery supplied
- Collection & delivery by arrangement

18 years' experience with **LAWNMOWER SALES & SERVICE**

Open 8-5 Monday-Friday, 8-12 Saturday

Unit H5, New Yatt Business Centre, New Yatt, OX29 6TJ

Tel: 01993 881320 or email: robert.milloini@btinternet.com

JEM
CHIMNEY
SWEEPING

- NO FUSS •
 - NO MESS •
 - NO PROBLEM •
- Tel: 01865 772996

Are you a local business?

You could advertise your business here
from £3 per month.

For details email

slate-ads@stonesfield.online




DJR MILES

BATHROOM, PLUMBING & HEATING ENGINEERS LTD

www.djrmiles.co.uk

 BATHROOM & PLUMBING

 GAS & OIL HEATING SYSTEMS

 RENEWABLE HEATING SYSTEMS

t: 01993 891533 m: 07860 142230

e: [djrmpheltd@yahoo.co.uk](mailto:djrmbpheltd@yahoo.co.uk)



THAMES VALLEY TREE CARE LTD

Founded in Stonesfield.
Providing a professional, reliable and
innovative service in all aspects of tree
surgery and hedge management

FREE no obligation quote

Tel: 01993 891381
Mob: 07971018279
Email: info@tvtreecare.co.uk
www.tvtreecare.co.uk

DIRTY CARPETS, UPHOLSTERY, RUGS



Most carpets dry within the
hour
Unbeatable results, removes
almost all spots & stains
call
GRIMEBUSTERS

01993 868924 01865 726983
www.grimebusters.co.uk

Tracey Keeling 

Personal Trainer

The Older Adult Training Specialist

Any age is the right age to exercise.
(Face to face or on-line)

07977 228756
www.hardenhealthandfitness.co.uk

A.L. SOLE & SON


FUNERAL DIRECTORS

Bidston Close · Over Norton · Chipping Norton · OX7 5PP
01608 644112
office@solefunerals.co.uk
www.solefunerals.co.uk



Your local independent funeral director since 1948.
Providing a considerate and appropriate service
with a refreshingly normal approach.

*24hr Service
*Private Chapel of Rest
*Pre-paid Funeral Plans

Lighting Your Way Into The Future

STEPHEN J. WILEY

ELECTRICIAN

Additions • Alterations • Rewiring
Surveys • Security Lighting
Cookers • Showers
Telephone Points

NO JOB TOO SMALL

Tel (01993) 882778/881409

90 Main Road, Long Hanborough, Witney, OX29 8JY
Stephen.Wiley@btconnect.com

OXAD

Stonesfield's new Architecture and Design Studio

- All planning applications
- Listed building consents
- Building Surveys
- Renovations, conversions and new build projects
- Full design packages from concept to construction

Need advice? We are happy to help, feel free to call us



<https://www.instagram.com/oxa.design/>



Andrew 07462879191

Andrew A. Adams FCCA

Chartered Certified Accountant

Quality personal service for your
Accounting, Taxation and Business needs

Competitive fees agreed in advance

Free initial meeting

Telephone: 07790 854574
01993 891280

Email: aaadams@TalkTalk.net

STONESFIELD GARDENING CLUB

Stonesfield Gardening Club is a friendly, sociable club with a full programme of events (see website). You can meet fellow members, listen to interesting and knowledgeable speakers talking about a wide variety of gardening topics and enjoy organised visits to various gardens.

More details at
www.stonesfieldgardening.info

onevillage.com

**One place to go
for interiors**

**Online & On the A44
in Woodstock**

The social choice
WORKING WITH
CRAFTMAKERS' CO-OPS
IN ASIA & AFRICA
SINCE 1979



TOWN & COUNTRY
TREES LIMITED



A tree surgery company with
the integrity you can trust.

Tel: **0845 458 2980**

Mobile: **07976 261850**

Email: **info@townandcountrytrees.co.uk**

www.townandcountrytrees.co.uk

PELLMANS
Solicitors

- **Business, Agricultural and Employment Law**
Contracts, Legal Compliance & Disputes
- **Property**
Buying & Selling Homes, Commercial & Agricultural
- **Wills, Probate and Trusts**
Tax Planning, Lasting Powers of Attorney & Elderly Client Advice

01865 884400

www.pellmans.co.uk

1 Abbey Street, Eynsham, Oxford OX29 4TB

Home visits and evening appointments available



Perfect Finish

Hand Ironing Service

- Fully Insured
- Collection & delivery
- Shirt ironing and hanging service
- Clothing, bedding and linen
- Based in Stonesfield

Contact Marie: 07969 685 479

perfectfinishironing@hotmail.com

www.perfectfinishironing.co.uk

We care, when it matters most.

An award-winning local family business
trusted by families for over 60 years
with a first class reputation for quality,
value and service.

“Invaluable support”

“Seamless arrangements”

“Nothing was too much”

“Sympathetic and professional”

Above are just some of the many touching
comments we have received about our service.

Learn more about us at

www.jerramsbrothers.co.uk or call us at any time.

Jerrams Brothers

Funerals Funeral planning Memorials Support Est.1949

33 High Street Woodstock OX20 1TE 01993 811491
18 The Kidlington Centre, Kidlington OX5 2DL 01865 374444





Professional, local tree care

Removals, pruning, stump grinding and
hedge cutting

Insured and qualified

Chris Murphy FdSc (Arb) NdArb
07738 151880

chris@ashdowntreemanagement.co.uk
www.ashdowntreemanagement.co.uk



Maeve O'Donnell
Acupuncture

**Acupuncture for stress reduction,
pain relief, arthritis, migraine, fatigue,
hormone imbalance, and more.**

Appointments available at my Stonesfield
clinic or in your own home.

To find out more or arrange an initial
consultation please contact me on 01993
898102 / 07791 278618

maeve@maeveodonnellacupuncture.co.uk
or visit

www.maeveodonnellacupuncture.co.uk

 @maeveodonnellacupuncture

Woodstock Solicitors

WILLS ~ PROBATE ~ POWERS OF ATTORNEY

INHERITANCE TAX PLANNING

Tel. 01993 811 792

Email info@woodstocklaw.co.uk

Woodstock Solicitors - 1st Floor - 32 New Road - Woodstock - OX20 1PB



Hypnotherapy

For help with anxiety, stress, pain control, insomnia, phobias, unwanted habits, confidence and self-esteem, exam and interview nerves.

Contact: Linda Flanigan
Clinical Hypnotherapist
GHR Registered & Member (Lic.) of National Council for Hypnotherapy

Tel: 07866 360359
Email: linda@lfhypnotherapy.co.uk
www.lfhypnotherapy.co.uk

Imagine Life

if you had your own...

Gardener
Decorator
Babysitter
De-clutterer

I can help you clear your clutter, weed out your wardrobe and find new homes for your unwanted items.

Dog Walker
Spring Cleaner
Moving House Help
House & Pet Sitter...

all rolled into one!

For one-off events or regular help please contact Lindsey
hatsoffstudios2@gmail.com or call
01993 898620 07941 561471

Stonesfield Tennis Club

The club was established over 100 years ago with membership open to all at very competitive subscription rates. The two astro-turf tennis courts were re-laid in 2018 and are in excellent condition with plenty of court availability.

Phone: 07795 441986
(Andrew Tacon; Chairman)

Website:
[https://clubspark.lta.org.uk/
StonesfieldTennisClub](https://clubspark.lta.org.uk/StonesfieldTennisClub)

Email: stonesfieldtc@gmail.com
Facebook: [@stonesfieldtennisclub](https://www.facebook.com/stonesfieldtennisclub)
Instagram: [@stonesfieldtennis](https://www.instagram.com/stonesfieldtennis)

MICHAEL PRICE & SON PLASTERING

58 Ticknell Piece Road
Charlbury, OX7 3TW

Tel 01608 811642
Mobile 07710 170049

GEOFF BOOTH

Landscaping • Paving • Walling
Driveways • Fencing • Brickwork
Building maintenance
Garden maintenance
Free quotations

Mob: 07710 628248
Email: geoffboothlandscaping@hotmail.com

Rita Johnson

(was Hutchings)

Painter & Decorator

Internal & External.

Quality work.

Clean, efficient, friendly worker.

Contact me for free estimates.

01993 772078 or 07826 011560

PROBLEM FEET ?!

NAIL CUTTING. CORNS. CALLOUS.
HARD/DRY SKIN. FOOT MASSAGE.

**TREATMENT IN THE COMFORT
OF YOUR OWN HOME!**

Sharon Davies MCFHP/MAFHP

01993 891132/ 07941843353

OVER 18 YEARS EXPERIENCE

**REGISTERED MEMBER OF THE BRITISH
ASSOCIATION OF FOOT HEALTH
PROFESSIONALS**



PRICE LIST

1 BUILDERS BAG £90.00

2 BUILDERS BAGS £175.00

3 BUILDERS BAGS £250.00

**PRICE INCLUDES VAT AND DELIVERY WITHIN
10 MILES OF LONG HANBOROUGH**

☎01993 880 500

✉ info@bowards.co.uk

Bed and Breakfast at Combe

For details
please view

www.greenclose.net
or call 01993 891223

A. K. P. DIXON

Home & Garden Maintenance
& General Handyman

For all those jobs you need doing
inside & outside – I'm your man!

Call Ade on 01993 813873

or 07825 631111

email: handymanade65@gmail.com

PJR Plumbing & Heating

- * Installation
- * Maintenance
- * Repair & Service
- * Gas Appliances & Safety Certificates



Tel: 01993 881069

MOB: 07515 733398

500807

D S JONES

BUILDING & ROOFING

All aspects of building, & roofing undertaken

For all enquiries call or email

07496149990

dsjmaintenance@hotmail.com

Instagram: @dsjonesbuilding

FLOWERS

ESTATE AGENTS



"The Agent of choice in Woodstock and the surrounding villages"

Call 01993 627766 for confidential advice on all property matters.

RESIDENTIAL SALES & LETTINGS | LAND & NEW HOMES

woodstock@flowersestateagents.com | flowersestateagents.com

LONDON HOUSE, 16 OXFORD STREET, WOODSTOCK, OX20 1TJ



BLenheim PALACE

Palace and Play Pass

Access to all areas, all year*

Enjoy a fun-filled day across the Palace, Park and Gardens and unlimited access to Adventure Play with our brand-new Palace & Play Pass.

Our Palace and Play Pass allows you to enjoy everything that our 300-year old Palace, Park and Gardens has to offer, as well as unlocking access to Adventure Play.

Visit our website for full T&Cs: blenheimpalace.com/adventure-play/palace-and-play-pass/

Icons of British Fashion - 23rd March - 30th June

Don't miss out on a chance to see our biggest ever exhibition, Icons of British Fashion. The exhibition features an incredible line-up of world-class British designers and labels, with each fashion house taking over one of our significant rooms, and will celebrate fashion from the past through to the present day. The designers include Barbour, Bruce Oldfield, Jean Muir, Lulu Guinness, Stella McCartney, Stephen Jones Millinery for Christian Dior, Temperley London, Terry de Havilland, Turnbull & Asser, Vivienne Westwood and Zandra Rhodes. Entry is included with an Annual or Privilege Pass or a Palace, Park and Gardens day ticket. Find out more and book at:

blenheimpalace.com/whats-on/events/icons-of-british-fashion/

Blenheim Palace Flower Show - 21st to 23rd of June

The fabulous three-day show is back between Friday 21st - Sunday 23rd June 2024 to showcase the best of British gardening.

Featuring more stands and entertainment than ever before, this year's show also welcomes the return of the magnificent Grand Floral Pavilion, as well as incredible outdoor floral displays in 'Floral Street', talks and demonstrations from gardening experts, fabulous food and drink, homeware and crafts, plus live music throughout the weekend. Green-fingered enthusiasts can delight in plant shopping, marvel at incredible floral displays and receive expert tips and advice from plantsmen at the show. Find out more about this year's show:

blenheimpalace.com/whats-on/events/flower-show/

Keep up-to-date with our news and latest events by signing up to our newsletter at

blenheimpalace.com



The Names of a Hare:

A free-standing sculpture featuring dialect, regional and riddle names for the beautiful European Hare often seen around Stonesfield.