



Nice weather for ducks

The phrase 'nice weather for ducks' was severely tested as the 2023 1st Stonesfield Scout Duck Race was held in the middle of a severe weather warning. 1,700 ducks graced the waters of the Evenlode, providing the community an opportunity to win a handsome prize, as well as support their local group in their efforts to build a new Scout Hut and carry on the 75-year tradition of having Beavers, Cubs and Scouts in the village.

The BBQ and bar did a brisk trade once again, providing sustenance to the many families who came down to the river. The gusty wind, recent rain and added 'fertiliser' for the plants from Thames Water made this year's course a tricky one for ducks to navigate, with many of them being trapped in the reeds along the edge or blown into the bank under the trees just metres from the finishing line.

The unlikely winner was one that was almost fully submerged, being at less risk from the crosswind and using the strong stream to its full advantage. At the time of writing, well over £2,100 was made on the day, creeping upwards as late donations come in.

Thank you again to everyone who makes this event possible, including duck shovers, duck scoopers, duck sellers, duck counters, BBQ flippers, bar servers and a friendly farmer who saved the day on multiple occasions by getting all the kit there and back. But the biggest thanks of all go to all the opportunist duck race punters. This event is firmly part of the calendar, and we thank you for coming to support it every year, no matter what the weather brings.

Continued on p24

Do you want to send in an article but have no email?

Just call the editor (see below) who can arrange to collect your handwritten copy.

Do you want to advertise?

An advertisement in *The Stonesfield Slate* starts from as little as **£3 per month**.

Please email **slate-ads@stonesfield.online**, or call the Publishers on 01993 898841, for full details of availability, sizes, requirements and cost. We can also help with design if required.

Any new advertisements, or changes to existing advertisements, should be emailed to **slate-ads@stonesfield.online** **by 10th of the month**.

All advertisements must be **paid for in advance**.

Disclaimer

The Stonesfield Slate is a village amenity, produced and distributed by volunteers. It cannot be held responsible for any of the views expressed in its pages nor does it endorse any of the products or services advertised.

Articles are solely the responsibility of the writers and their opinions do not necessarily accord with those of the editors or publishers.

Whilst we strive to ensure all information is correct, we are not responsible for anything that happens as a result of you using the information. If you find any errors or omissions then please contact the Publisher and we will endeavour to correct them.

Dates for your diary are always subject to change. Please check with event organisers.

The editor and the publishers reserve the right to edit, shorten or omit any article submitted.

Publishers

Diane & Paul Bates,
Waterloo Barn, Laughton Hill,
Stonesfield, OX29 8DY
(898841)
slate-pub@stonesfield.online

Editor for Sept issue

Fiona Dangerfield
(07814 112437)
slate@stonesfield.online

Copy:

Deadline for next issue 15 Aug

Please email copy to
slate@stonesfield.online
or contact the Editor by phone.

Editor

Viv Kendall
(891803)
slate@stonesfield.online

Printer

Windrush Press, Witney

©TheStonesfieldSlate 2023

Advertising:

Deadline for next issue 10 Aug

Advertisements to
slate-ads@stonesfield.online

Current and past copies of the *Slate* are available at www.stonesfield.online

Dates for your diary:

July

31	Monday Coffee	St James' Centre	10-11.30am
----	---------------	------------------	------------

August

1,8,15,22,29	Zumba	Village Hall	7-8pm
1,8,15,22,29	Strong Nation HIIT	Village Hall	8.15-9.15pm
1,15	Carers Café	Village Hall	10am-12noon
2	Gatehouse Pilates	Village Hall	9.30-10.30am
2	Roman Villa Open Day	North Leigh	11am-5pm
2,3,9,10	Hannah Bathe HIIT Class	Village Hall	7-8pm
3,7,10,14,17	Taekwondo	Village Hall	5.30-6.30pm
4,11,18,25	Baby & Toddlers Group	Village Hall	10am-12noon
7,14	Monday Coffee*	St James' Centre	10-11.30am
9,23	Folk dancing	Village Hall	7.45-10pm
19,20	Roman Villa Open Day	North Leigh	11am-5pm
21,24,28,31	Taekwondo	Village Hall	5.30-6.30pm
21	Fossil Fun for 7-11s	St James's Centre	11am
21	Village Hall Committee Meeting	Village Hall	6.45-8pm

* There is no Monday Coffee on 21 or 28 August

September

2	Repair Café	Village Hall	11am-2pm
3	Stonesfield Players Cream tea & play	Village Hall	2-4pm
3	Afternoon tea	Combe Reading Room	2.30-5pm

Contributions to The Slate

The editorial team and publishers are conscious that not everyone has access to email and/or a computer. If you are in this situation and would like to submit something for publication, please get in touch with the Editor in order to make

alternative arrangements. We are happy to collect something handwritten from you or to take it down over the phone. The Editor's name and contact number appear on page 2 of each issue.

Notices & news

Clive Sutton

Mary, Simon and Katie would like to thank everyone for their love and kindness following Clive's death on 30 May.

We sincerely appreciate all of the help we received during Clive's illness and we are very grateful for everyone's support at such a difficult time. Thank you.

Mary Sutton

St James the Great Restoration Appeal



Thank you to everyone for your most generous donations towards the restoration of our wonderful church, the oldest building in the village. There will be a slightly later start date than originally planned, not least in order to ensure that weather conditions are suitable for the special materials to be used, but it will be worth the wait!

Lindsey Sellar

St James the Great Church 800th anniversary



The 800th anniversary was celebrated in style on 17 and 18 June, with a lovely display of Christening gowns which was enjoyed by many. Then followed a special service of celebration, and the weekend was completed by a wonderful concert of folk music by Jarisel.

Beautiful mugs have been specially designed for the 800th anniversary, and are now for sale - £12 for one, and £10 each if buying more than one. Come and have a look in the church, which is open every day; or email stonesfield@stonesfieldparishchurch.org, or telephone 898757.

Lindsey Sellar

Repair Café

The next Repair Café will be on Saturday 2 September, from 11am - 2pm in Stonesfield Village Hall. Do volunteer to this address if you'd like to help as a repairer or on reception:
stonesfieldrepaircafe@gmail.com.

School Fete

Stonesfield School Fete, organised by the Friends of Stonesfield School (FoSS), took place on the school field on Sunday 4 July and was a huge success, raising an incredible £3,545.58 for the school. A massive thank you to everyone in the village who supported this cause, with hundreds of locals enjoying the big day.



The day kicked off at 12pm with the start of the BBQ and Bar, live music and a very popular bouncy castle. Charlbury Morris Dancers kept us entertained in the main arena, with tea on tap from our wonderful volunteers in the tea & cake tent. The sun was still shining for tug of war, tractor rides and hook a duck, which meant the whole community could get involved. We had a variety of stalls including local entrepreneurs; Ruby Doyle selling jewellery and the Tuck Sisters (Freya & Lily Harris) selling sweets. Chrissie kindly brought her owls, which were very popular with all ages.



Special thanks go to:

- All the parents and volunteers from our community who helped with the organising and running of the Fete
- Stonesfield Scouts for setting up and providing equipment
- Stonesfield Gardening Club for donating towards our total raised
- Stonesfield Pre-School for running the Coconut Shy; donated by Brecon and Brecon
- Muriel Barrett, Kathleen Albert and Jane Rust
- And finally, the wonderful people in FoSS who put in so much effort into making the event successful.

We are looking forward to next year!

Sarah Lydiat

FoSS Co-Secretary



BBC Radio Oxford's Cost of Living Clinic comes to Witney

BBC Radio Oxford is hosting a Cost of Living Clinic in Witney Market Square on Thursday 27 July, 10am - 1pm. It will be an opportunity for those who may be struggling with the cost of living, to drop in and have a conversation with representatives from Citizens Advice, local food groups, housing providers and a team from West Oxfordshire District Council who will offer advice and support. Radio Oxford will cover the event on air.

If you know someone who needs support, please contact West Oxfordshire's Resident Support Worker on **01993 861077** or email Community.Support@westoxon.gov.uk.

YouMove – Low-cost and free family activities



Active Oxfordshire is working with Oxfordshire County Council Public Health, district councils, leisure providers, schools and local communities to launch YouMove across the county and provide families with low-cost and free activities to enjoy together.

By signing up to YouMove, local families can benefit from low-cost or free fun activities including swimming, badminton, activity packs and a wide range of community activities near to where you live. Local Activators in each district provide advice, support and guidance about what's on offer.

If your child or children are in receipt of benefits-related free school meals, then

there is a fantastic range of activities to enjoy together, including during weekends and school holidays. In addition, YouMove is here for children in need of support; this includes refugee children, young carers and children in or on the edge of care.

Visit here to sign up to YouMove:

www.getoxfordshireactive.org/you-move and more information on what's available in West Oxfordshire is at:

www.getoxfordshireactive.org/youmovewestoxfordshire.

Kids eat free

Money Saving Central is carrying information about supermarkets and food chains including Sainsbury's, Asda, Tesco, which have offers for the summer holidays where children eat free or for £1 alongside a purchased adult meal. For details look at www.moneysavingcentral.co.uk/kids-eat-free.

Village Hall News



As the summer holidays roll on, we quieten down in the hall. With more people away, and some of our regulars taking a well-earned break, we find ourselves in a relatively peaceful lull preparing for the autumn months and the lead-up to Christmas! Sorry to mention that, but we

have gone through the midway point of the year now, so we know it will come round quickly, and any events organisation for the winter period starts now. With that in mind, why not take advantage of the lazy summer days to plan a new activity or weekly group and see what availability we have?

Community Café – We have one more space left this year for the Community Café which will fall on 7 October. If you want to book to raise money for a group or charity, please get in touch. Also if you are thinking about running one, but you aren't ready yet, we are now booking for next year's dates, which are the first Saturday of each month.



Committee Meeting – Have you got some spare time and would like to be involved in a worthy cause? We have our next Village Hall Committee Meeting planned for Monday 21 August at 6.45pm. Everyone is welcome: just come along to see what we do.

Enjoy the summer break, and thank you to everyone for your continued support.

Jacqueline Carthew (898919)

Secretary & Booking Clerk for Stonesfield Village Hall

stonesfieldvh@gmail.com

Stonesfield Social and Seniors Café

Our first season as a community social venture finished with a party, and like all our sessions it was open to everyone.

We have continued to see new faces as well as welcoming regulars. The afternoon café has a steady group of regulars coming along and the evening social has been serving up to 80 portions of healthy, home cooked food, every Tuesday in term-time.

Much of the fresh produce is rescued by our friends at The Oxford Food Hub, who save it from being wasted so that we can turn it into yummy dinners.

We're also grateful to the Stonesfield Village Hall Committee, and Oxford Community Foundation, WODC and Oxford Community and Voluntary Action for grant funding. It wouldn't be possible without our many volunteers, too numerous to mention but special thanks to our younger workers, Leland and William, Mould, Aoife and Mar.

We're taking a break now till September. If you'd like to be part of these social activities, look out for dates in the September Slate and on NextDoor Stonesfield, and come along. If you have any ideas about how we can be even better or would like to volunteer, please get in touch.

Thanks too, to all our guests, we've loved getting to know you all and waving to you when we see you round the village!

Julie Curran (07973 730907)

Co-Chair, Stonesfield Village Hall Committee and Food Group Chair

juliecurran0@gmail.com

West Oxfordshire Community Choir

WOC Choir is opening its doors to new members once more from Wednesday 13 September. The choir meets once a week at St James' Centre from 7:30 - 9:30pm. The first night is a free trial for all potential new members, so why not come along and discover what being a member of WOC Choir is all about?

The choir is open to singers from all local WO areas, and music reading ability or previous singing experience is not a requirement to become a member. We sing an eclectic mix of genres from pop to musical theatre; rock to swing.

I founded Stonesfield Community Choir (now WOC choir) over 10 years ago, with the aim of creating a community singing group for all abilities and for anyone with a passion for music and singing. These ten+ years have been joyous and I feel very privileged to run the group. Being unable to operate for such a long time during the pandemic really was difficult for all choir directors/vocal coaches and I missed teaching the group hugely. Luckily, we now have the freedom to sing together to our hearts' content each week and we certainly make the most of it! Why not join us for some much needed musical joy on a Wednesday evening? We'd love to welcome you.

Laura Rudge
WOC Choir director

St James' Centre – available for hire

St James' Centre (opposite the school) is available for hire for both regular and one-off bookings.

It is an ideal venue for children's parties, family gatherings, adult education classes, meetings, workshops, fundraising events etc.

The Centre comprises a light, spacious main hall (with folding tables and stacking chairs) and a large rear room with sitting room and art areas. There is also a fully equipped kitchen and a beautiful garden.

Rates are calculated on an hourly basis, and depend on the number of rooms used. Weekday hourly rates range from £14 - £24; for weekends they range from £16 - £26.

If you would like further information or to book, please do get in touch – email sjsbookings@gmail.com.

Ruth Sellar
St James' Centre Bookings Administrator

North Leigh Roman Villa

The next Open Days at the Roman Villa at North Leigh will be on Wednesday 2 August, Saturday 19 and Sunday 20 August.

Full details are on the English Heritage website: www.english-heritage.org.uk/visit/places/north-leigh-roman-villa/.



ENGLISH HERITAGE

NORTH LEIGH ROMAN VILLA

Mosaic Open Days

Plaza Suite

Performing a two-hander is a huge challenge. There are a lot of lines to learn, and the actors are very exposed. Mounting *three* comic two-handers in one evening is an even tougher project, but Director David Stevenson and the Stonesfield Players tackled it with enthusiasm and hard work, and delivered plenty of laughs.



Beth Binnian, Mark Saville & Alison Richards

They were helped by Neil Simon's brilliant script, which sparkles with wit and sharply defined characters. In the first play, Karen (Alison Richards) came across loud and clear as a feisty woman who is hell-bent on getting her husband to step back in time and re-live their wedding night. Alison's performance brought out her character's sense of humour, her short temper and her feminine intuition. Mark Saville's Sam toed a dogged line of stubborn resistance, which morphed movingly into bewilderment when he confessed to having an affair with



Gareth Meager & Becki Sherlaw-Johnson

his secretary, coolly played by Beth Binnian.

The second play involved a famous film producer – Jesse – seducing an old flame: Muriel. It is interesting to reflect on how tastes have changed since the 1960s, following the #MeToo movement. Gareth Meager brought conviction and skill to Jesse's advances, while Becki Sherlaw-Johnson (who coped splendidly in a last-minute change of cast) nicely conveyed the ambivalence of Muriel's role in the eventual outcome. Between them they managed to steer clear of anything that, post #MeToo, might have seemed offensive.



Andy Tacon & Ruth Thornburn

The final play was a hoot, with frantic parents (Ruth Thornburn and Andy Tacon) each as desperate as the other to get their daughter out of the hotel bathroom and down to her wedding ceremony. Andy clearly enjoyed playing the money-fixated father, while Ruth's palpitations and parental self-doubt provided the female counterpart.

Well done to the set designers, set dressers, lights and sound: it looked and sounded great. The costumes were a triumph of 1960s realism, and as for the hair - a special mention has to go to those heated rollers that had clearly worked so hard behind the scenes.

Caroline Friend (Photos: Geraint Lewis)

Same Table Next Week: The Stonesfield Players

Come to the Village Hall at 2pm on Sunday 3 September for a one-act play served up with a cream tea. *Same Table Next Week* by Nicky Holland is set in a tearoom and is a light-hearted comedy following one woman's pursuit of friendship and a new meaning in life after early retirement. The village hall will be transformed into the tearoom so the audience will feel they are part of the drama – but don't worry, no participation is required!

Tickets are £10 and include a cream tea. If you have specific dietary requirements, please contact us by 29 August so that we can cater for you. Tickets are available from 3 August from Suriya Express (payment by cash or cheque only) or from Andy Tacon 01993 891217, 07795 441986 or andrew.tacon@outlook.com, .

Pre-School 100 Club

We are pleased to announce our 100 Club winners for the July draw.

1st Prize - Number 45- Ryan John £25.00

2nd Prize - Number 73 - Mr and Mrs Higginson £10.00

Congratulations to you all.

This was the last draw for 2022/2023 membership. We are now selling numbers for 2023/2024 membership – please contact Simon Hopkins at sphgolf66@gmail.com or call into Pre-School and you can pick up a registration form.

Zena Rozee (898012)

Pre-School Administrator

Book Break's Break

Book Break is taking an August break and will start again on Thursday, 7 September. It has been another year of good reading and lively discussion. Our continued focus has been upon the shared reading aloud of the shorter novel, starting with *The Third Man*. Few of us realised that Graham Greene had written this as the script for the Carol Reed/Orson Welles film in the first place and only adapted it into a novel after the success of the film. This gives us permission to say that we thought the film was better than the novel! We did enjoy the book, however, noticing the ways in which it differed from the film.

Staying On is the sequel to Paul Scott's Raj Quartet which many may remember as *The Jewel in the Crown*, serialised on television in 1984. A vivid portrait of the final years of the Raj, we found it impossible not to warm to the curmudgeonly Tusker, who is described with great humour.

We have just finished reading *To Kill a Mockingbird* by Harper Lee, appreciating the issues raised within the context of its time and trying to make sense of the reasons why the book has been banned in schools in many US states. We are looking forward to watching Gregory Peck taking on the role of Atticus in the film. As always, we are grateful for the use of Stonesfield Library as our venue throughout the year.

Wendy Lynch (891107)

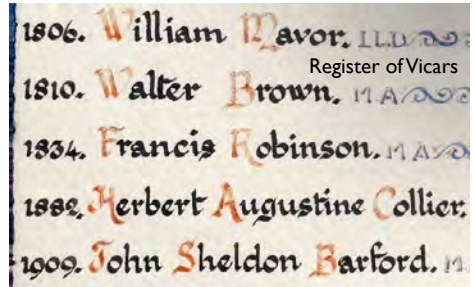
Stranger than fiction

Rachael Naylor and I, two library volunteers, were on duty in Stonesfield Library in early July when a lady and her husband called in. From their accent it was clear that they were Australians. She introduced herself to us as Merete Smith and handed me a package containing two small booklets. The booklets, each about postcard size, were entitled *The Lion* and the other *The Tiger* and *The Wolf*. Merete had discovered a package wrapped in frayed brown paper, located in the Morgan Collection of Children's Books at the University of Melbourne.

The package contained the manuscripts of two anonymous, undated and untitled early 19th century children's books, written in 17 separate notebooks of various sizes on writing paper mainly watermarked 1827. All the books were in the same handwriting. Merete recognised the second book as a draft of *Children As They Are*, a children's book published in London in 1830 and a book she had previously researched.

This coincidence allowed the author of both books to be identified as Eliza Brown (1785-1831), a parson's wife from Stonesfield and mother of twelve children, of whom the youngest was called Laura. Eliza was the anonymous author of three children's books published between 1828 and 1830. The first book is currently being published by the Primrose Press of Melbourne as an illustrated edition with the title *Laura's Animal Stories*. It consists of thirteen individual animal stories which will initially be published separately, with the first being *The Lion*. The stories are in dialogue style between Laura's elder sister

Mary and Laura, and written in a style that a six-year-old child would understand.



Merete went on to explain that in Stonesfield parish church there is a plaque in memory of Walter and Eliza Brown – it's in the north transept, just to the left of the altar. Walter is also included on the *Register of Vicars*, being our vicar from 1810-1834. We are hoping that the Oxford Library Service will be acquiring all 13 stories in the series and that they will be placed in Stonesfield Library for the benefit of us all.

Mike Pollitt

Afternoon tea at Combe Reading Room

We are holding our afternoon tea event again this year in the garden of the Combe Reading Room on Sunday 3 September from 2.30 to 5.00pm. All proceeds will go to the Cystic Fibrosis Trust.

We will be serving cream teas, homemade cakes and hot drinks. We will also be selling a new range of handmade gifts and will be holding a raffle.

If you are not able to be there but would like to support the Cystic Fibrosis Trust, please contact me to purchase raffle tickets; price £5 for a book.

Libby Hanks (07958 595668)

Neighbourhood Watch Attempted break-in on The Ridings

There was an attempt to break into a garage on 7 July between 1.40 and 1.48 am, at a home on The Ridings. The owner heard, as the drive is gravelled, and went out with a bright light, shouted at them and caused them to run away. There were three of them; they then got into a car and drove off. The police were called. Please be vigilant.

Anyone interested in joining the Neighbourhood Watch Scheme can find details and register at: www.member-registration.neighbourhoodalert.co.uk/30/Join. Click on 'Join a scheme' and select 'Stonesfield'.

Deanna Asplundh

Stonesfield Neighbourhood Watch
Coordinator

Police and community support

For information or advice on security concerns, please call 101 or contact woodstockNHPT@thamesvalley.pnn.police.uk

More police officers

The number of police constables in Thames Valley Police's neighbourhood teams is set to double, increasing the number of officers available to deal with local crime across the region.

Eighty additional neighbourhood officers, funded by the Police and Crime Commissioner are to be brought in and local policing teams restructured. The increased resource in neighbourhood teams, together with a central community policing programme will re-establish neighbourhood policing at a local level. The changes for Oxfordshire will take place in 2024.



STONESFIELD SEPTEMBERFEST

Sat 9th September 2023

Septemberfest is a family friendly music & beer festival raising money for good causes – Cancer Research UK, BBO Wildlife Trust & Stonesfield Village Playground

HOW TO GET INVOLVED

Volunteer: We need bar staff, first aiders, clean-up crew and anyone with fundraising experience. Please get in touch if you can lend a hand!

Sponsor us: You can help in making Septemberfest possible by sponsoring a beer barrel (£150) or even being a Headline Sponsor (£1000) with your name above the main stage!

There are various sponsor packages available which include advertising and complimentary tickets. – please contact Karen Payne on 07769948075 or email us: hello@septemberfest.org.uk

If sponsorship is not for you but would still like to make a contribution we have set up a 'Just Giving' page: <https://www.justgiving.com/crowdfunding/karen-payne-2>
A donation (however small), would be very much appreciated

Volunteers: Please get in touch with a committee member, via our webpage www.septemberfest.org.uk or  Facebook

Politics & local affairs

Boundary Commission changes

The Boundary Commission for England has concluded its 2023 Review of Parliamentary constituencies in England, to rebalance the number of electors in each, and has submitted its final report and recommendations. These, together with an interactive map of the recommendations, are available on www.bcereviews.org.uk.

The recommended Parliamentary constituency for Stonesfield is Bicester and Woodstock; and no longer Witney.

The Government will draft an Order containing the recommendations of all four Parliamentary Boundary Commissions (for England, Scotland, Wales and Northern Ireland). Once that draft Order is approved by the Privy Council, the new constituencies will be used for the next general election following that date. Existing constituencies will be used for any by-election that may take place beforehand.

Boundary Commission for England
www.boundarycommissionforengland.independent.gov.uk



Stonesfield Parish Council

Parish Council meeting - 5 July Community Grants

Cllr Tim Sumner from WODC attended the Council meeting on 5 July and advised Council that Community Grants have been realigned, and when things were clearer he would report back on the detail. Council asked Cllr Sumner to establish whether the village hall could qualify for funding for a new kitchen, which is where a lot of meals are cooked for the Community Café etc.

Verge cutting frequency

A member of the public had contacted the clerk regarding the frequency of verge cutting. The Council understands that there are mixed views on frequency of cutting – some would like the verges kept neat, some prefer them wilder. Both views are important to us. We do keep the land proposed for future cemetery use as a wildflower area, while any verges close to highway junctions usually have to be kept short for visibility. The Parish Council at the moment contracts West Oxfordshire District Council to arrange four main cuts a year in addition to those junction cuts.

White Horse Pub

A few questions had been raised about Council involvement in the White Horse Pub. The Council would like to make it clear that Cllr Brown has not been instructed by the Parish Council and is not acting in his position as a councillor to liaise with the owner of the pub. The Parish Council continues to support the pub as an asset of community value, but it is not able to advise on the pub and is not able to give planning or legal advice for this. The pub owner should be speaking to West Oxfordshire District Council if he requires advice on these matters.

Grant applications

The Council considered and unanimously approved a £350 grant for Stonesfield Mutual Aid. This amount is £200 towards a freezer and £150 towards staple foods to help stock it.

Neighbourhood Plan

The Neighbourhood Plan Group has recommended an independent assessment following advice from WODC. The clerk will apply for a grant for the cost of this; anticipated to be about £5,000.

Planning applications

Council considered the following planning applications:

Application No. 23/01394/HHD – single storey extension, 11 Cockshoot Close. There was no comment or objection on this application.

Application No. 23/01451/HHD – solar panels and heat pumps, Waterloo Barn. There was no comment or objection on this application.

Application No. 23/01361/FUL – Expansion of Marlborough C of E School, Woodstock. Exhibition of the plans at school on 17 July 2023 between 6 - 8pm. The Parish Council supports the school expansion.

Other working groups

Litter Picking group – the Council supports this remaining as a working group and will try to arrange a litter picking day and give this action a push.

Common group – Several councillors and the clerk had met at the Common with Richard Morris and Alan Kendall and had come up with a plan of actions which includes putting in kissing gates and some tree work.

Date of the next full Council meeting: 6 September 2023 at Stonesfield Primary School at 7pm. There is no August meeting.

Stonesfield says 'Slow Down'

98% of respondents to the Neighbourhood Plan survey said that reducing traffic speed was important or very important.

Community Speedwatch is organised by Thames Valley Police as part of their objective to reduce speeding and accidents.

Stonesfield Community Speedwatch is looking for more volunteers.

You need to be able to give an hour or so a month, at times that suit you. You will be given full training and work as part of a group of three.

If you would like to volunteer to help your village then email

SAFER@stonesfieldpc.uk

SAFER is a Stonesfield Parish Council Working Group



News from West Oxfordshire

Planning – contributions from developers

West Oxfordshire District Council has put forward its supplementary proposal for how contributions from housing developers will be sought to mitigate the impact of new housing developments. The planning document is likely to be adopted by the full Council in July. It follows consultation with communities on the measures that are most important, including provision of green spaces, school places, water quality and transport improvements, and it will complement the Council's Local Plan.

Developer contributions may be made under Section 106 legal agreements (Section 106 of the Town and Country Planning Act 1990 (as amended)), to provide new on-site facilities or contributions towards off-site improvements. Alternatively Section 278 agreements are used to make permanent alterations or improvements to a public highway. The Community Infrastructure Levy (CIL) is an optional charge that can be set on new development in order to raise more general funds to help improve infrastructure, facilities and services - such as healthcare and community facilities.

This Developer Contributions Supplementary Planning Document has been prepared to help explain how the various mechanisms are intended to co-exist and complement each other and specifically what contributions will be sought in West Oxfordshire. It is aimed at landowners and developers, statutory providers, partners, stakeholders, service providers, Town and Parish Councils and the local community.

Further information is available on www.westoxon.gov.uk/planning-and-building/planning-policy/supplementary-planning-documents/.

Council Chamber

West Oxfordshire District Council is about to refit its council chamber. The improvements will include a new system to stream all Council meetings online so everyone can see local decision-making without having to attend meetings in person. The new council chamber will be available for varied uses including meetings, weddings, community functions and business events – which will bring in funds to pay for local services. The Council

will hold an open day when works are complete (by the end of the year) to explore how local groups may want to use the new facilities.

West Oxfordshire's Local Plan

The District Council has agreed to next stage of developing the Local Plan and a further consultation will take place in late summer. An earlier consultation held in autumn 2022 established the sort of issues that people want the Local Plan to address and a summary report is on the WODC website: www.westoxon.gov.uk/about-the-council/plans-and-policies/our-plan-for-west-oxfordshire/.

The responses to the consultation showed a strong level of support for many of the initial themes and ideas that were put forward, including tackling climate change, improving the health and well-being of our local communities, ensuring vibrant communities and providing new housing and job opportunities. It was also clear that communities valued the consideration of supporting infrastructure, at an early stage of any development.

The next consultation will help the District Council consolidate its overall objectives and potential policies as well as starting a discussion around the future pattern of development across the district. It also includes a 'call for sites', ideas and opportunities and how sites or areas of land might be used in the future such as nature recovery, renewable energy, green space provision and new housing or employment

The consultation will be held online and supported by a number of in-person events. Other various pieces of evidence will be taken into account alongside the consultation responses. The final draft plan

will then be prepared and published in late spring 2024.

To sign up for more information on the forthcoming Local Plan consultation please visit www.yourvoice.westoxon.gov.uk/en-GB/.

Services for health and wellbeing

West Oxfordshire District Council is to conduct a study of the district's leisure services towards establishing what the district should offer residents in future to help improve their physical and mental wellbeing. The Council has already examined its provision of playing pitches and will now look at leisure centres and other options. The study will be carried out by national leisure consultants in cooperation with Sport England to produce a strategy and recommended actions. It will involve consultation with residents and a wide range of groups and organisations.

Greenlight

The District Council has launched the Greenlight platform, an online forum on which organisations, groups and individuals can share ideas and ask advice to tackle climate and nature issues, including what can be done in domestic gardens. It will include an interactive local map of climate- and nature-related events and opportunities, and a directory of environmental groups, together with competitions, tips and a library of best practice guidance.

You can see the platform and get involved on www.yourvoice.westoxon.gov.uk/en-GB/folders/greenlight.

From our County Councillor

Holding utilities companies to account

Oxfordshire County Council is seeking permission from the government to adopt a 'lane rental scheme'. The scheme aims to reduce disruptive roadworks by utilities, incentivising them to keep to schedule and work off-peak. Fees of up to £2,500 per day can be collected and reinvested in the road network. The surplus could be upwards of £2 million a year from 2024-2025.

Pothole trial

A trial in Steventon and East Hanney tested seven different methods of repairing minor defects in the road surface. Some of the methods are already in use in Oxfordshire, while others are new types of repair. The trial will inform how defects are repaired in the future.

Fees for DIY waste

The Government has announced that charges for DIY waste collected at household waste and recycling centres should be abolished. OCC is awaiting instruction from the Government on when this change should be made. The charges currently help to subsidise the cost of running waste collection centres by £0.5m a year. Government is providing no additional funding to cover the shortfall created, which means that funding will need to be found through savings or increased council tax.

Nature recovery

Oxfordshire County Council has been designated as the lead authority in the country for nature recovery. The responsibility comes with additional funding from a £14 million pot, to be

divided between 48 councils. Local nature recovery plans were made a legal requirement by the Environment Act 2021.

Grants and cost of living

The Councillor priority fund is open for applications, and OCC's hardship fund (Resident Support Scheme) was launched in June: phone 01865 804171 for information.

Home Upgrade Grants

OCC & its partner AgilityEco are directly contacting households who will qualify to benefit from Home Upgrade Grants (to improve energy efficiency for 'off-grid' homes).

Cllr Andy Graham

andy.graham@oxfordshire.gov.uk

From our MP

Thames Water

In the last week of June I asked the Minister to reassure my constituents in West Oxfordshire that – among the questions that surround Thames Water's finances – day to day services will be protected and much needed upgrades delivered.

After rightly acknowledging Thames Water's performance as 'unacceptable' it was concerning to hear the news of Thames Water's CEO, Sarah Bentley, stepping down with immediate effect.

Thames Water needs to focus on bringing about the huge upgrades that are so desperately needed to our country's sewerage system.

The new CEO has a lot of work to do to restore public trust and I will be monitoring developments on this closely.

Botley West Solar Farm – Parliamentary petition

You will, I am sure, have heard a great deal about proposals for a Botley West Solar Farm which would, if approved, impact significantly upon Tackley, Wootton, Glympton, Bladon, Woodstock, Long Hanborough, Church Hanborough, Rousham, Eynsham and Cassington.

I have looked at the plans for Botley West in detail, and as I have explained in detail elsewhere, I am opposed to these proposals. More information is on www.robertcourts.co.uk/botleysolarfarmstatementRC.

As the latest part of our joint campaign against these proposals, **I want to present a constituents' petition to Parliament** to show the strength of feeling on this issue. This is part of our campaign: it will not automatically stop the proposals, but it has a very strong role in showing how strongly we all feel about this, because the petition will be presented in the Chamber of the House of Commons when the House returns after the summer recess, will be recorded on Hansard and – most importantly – will require the Government to respond. This matters, because it is the Government that will be deciding on this proposal, and so a clear demonstration of feeling at this stage is essential.

No to Botley West Solar Farm

Petition to Parliament

[www.robertcourts.co.uk/
botleysolarfarmpetition](http://www.robertcourts.co.uk/botleysolarfarmpetition)

It is incredibly important if you have a view on the proposals for a Botley West Solar Farm, that you engage with this petition so that I am able to accurately reflect the scale of opinion to the Government, thereby ensuring they take this into consideration when the final decision is made by the Secretary of State.

I would urge you to sign this petition through the link below and to share it far and wide so that we can send a clear message from West Oxfordshire's residents.

[www.robertcourts.co.uk/
botleysolarfarmpetition](http://www.robertcourts.co.uk/botleysolarfarmpetition)

Robert Courts
robert@robertcourts.co.uk

STONESFIELD VOLUNTARY TRANSPORT SCHEME

Our volunteer drivers are available to take you to local medical appointments or to the hospitals in Oxford and Banbury.

We make no charge but welcome a donation towards expenses.
COVID safety precautions are still in place, if you need them.

Please call or email to book transport in July:
Viv Kendall 01993 891803 or stonesfieldvts@gmail.com

Education, culture & more

Stonesfield Library

The Library (898187) is open as follows:

Monday 2.30-7pm

Wednesday 10am-12 noon

Thursday 2.30-5pm

Saturday 10am-12 noon

The Library Manager will be in the library every Monday.

Val Phillips (891455)

Friends of Stonesfield Library

Have you signed up for the Summer Reading Challenge?

It's not too late! The challenge is to read six books; you can read anything you like – stories, poetry, fact books, graphic novels or listen to audio books – it's up to you!

Come along to the library and pick up your Collectors Poster (for age 4 & over) and start the challenge. Under 4? The Mini Challenge is for you! What are you waiting for?

More information is on www.summerreadingchallenge.org.uk.

Bryony Mallows



Stonesfield Library, Village Hall, Longore, Stonesfield, OX29 8EF
stonesfield.library@oxfordshire.gov.uk | 01993 898187



I'm a Reader...

Stonesfield school children from years one and two class (six- and seven-year-olds) went on an adventure to our library last month.

Debbie Wilson, Stonesfield's Library Manager says: '26 children visited the library in groups during one of our morning sessions. It was the first time we'd had a school visit since Covid and it was a great success. The children were very well behaved and there was so much excitement; they encouraged each other, there was some healthy book envy, once one child had seen a good book, everyone wanted it!'

Events like these sow the seeds of enjoyment of literature for the future and

hopefully some of the children will drag their parents in to sign them up for this year's Summer Reading Challenge!

Afterwards the children were invited to share their thoughts on the outing in the form of an acrostic, with the word 'library' written vertically as their poetic inspiration. While correcting some spellings for clarity, I have left in particularly charming misspells. The struggles of young English writers always remind us that, while we might not have three words for 'the' like the German language, or an extensive grammatical system to express different levels of politeness like Japanese, the eccentric spelling of English defies logic; several of the attempts written by the children make far more sense than the correct spelling.

L

Look at the books short and tall (Abi)

Leading the library is such a great job (Dexter)

Lovely books all over the place (Henry)

I

In the nooks you can look (Abi).

I went to the fabloos library to read better (Harry H).

Imaginary worlds to visit (Rowan)

B

But remember to be careful with the pages. (Abi).

Books are grait (Rowan).

R

Read more and more, your books can be about enyfuck you want (Isabelle and Madeleine).

Reading is my favourite thing to do (BFF best friends forever: Poppy, Lucy and Fleur)

Rat book (Joe)

A

Amagnashon you let run wild (Ezra).

At the library is exciting (Charlie).

R

Rate the library 10 out of 10 (Harry E).

Rampaging pop-up books (Channon).

Reindeer books are the best (Poppy, Lucy and Fleur).

Y

Yay! The library is the best (Isabelle and Madeleine).

You can learn how to borrow books and use the machine (Abi).

You'll be reading all your life: ready, steady, read! (Henry).

You're laughing at the library (Jack).

Finally, the honorary 'I'm a Reader' award for 'grait' poetry goes to Madeleine and Isabelle who celebrate reading in an acrostic of BOOKS:

Boat and bicycle books

Once upon a time, a magical land began.

On a foggy land a castle stood.

Knigs and Quneens and lots more

So, you know the library, you can borrow more.

I would like to thank Stonesfield teacher Beth Brockall for organising and sending me the children's poems – I wish I could share them all.

Eleanor Bailey

Nature notes: High summer on the Common

If you haven't been down to the Common for a while, do go and have a look while it's brimming with colour. It may appear like just an area of rough grass – indeed it is unimproved limestone grassland (no fertilisers ever) – but if you look more closely it is full of wild flowers right now.

At the end of the Common near the bridge, the grass is close-cropped by rabbits and covered in a mass of yellow flowers – rockrose, ladies' bedstraw, bird's foot trefoil and spikes of agrimony, with pink restharrow in between. Even the old English names are evocative and nostalgic.

The pyramidal orchids will be coming to an end when you read this, and the delicate pink flowers on the banks of blackberries already hold the promise of autumn. Here and there are pale lilac scabious, red and white clover, pink cushion calamint, spikes of mignonette, purple marjoram and the pink and white trumpets of convolvulus.



Mignonette

Further along the top of the Common the taller grasses are dominant, but patches of yellow and purple are appearing and will take over the colour scheme in the next month: yellow ladies' bedstraw again, taller



St John's wort

here, with the purple of knapweed – and big patches of fluffy white from other bedstraw species. More colour comes from the tall wild parsnip (like cow parsley but yellow), yellow trefoil, and delicate lemony toadflax. The majestic purple meadow clary (see July Slate) is in seed now and the wild roses gone; by August the great woolly thistles will be showing their grey and purple golf ball-sized flower heads.



Woolly thistle

At the far end, the rougher shrubby mugwort, nettles and tall russet-seeded docks give way down the slope to a broad stand of yellow hawkbits and hawkweeds, with flowers like small dandelions. And if you explore the lower bank you will be rewarded by wild thyme, rockroses, quaking grass that's impossible to hold still, starry yellow St John's wort and soon, the powder blue of the first harebells.

Viv Kendall

Swifts

Swifts' behaviour is very much dictated by weather. It was a prolonged migration period for them this spring, due to a persistent northerly element in the wind. This meant some birds were much later in their arrival than previous years.

Once here, in good weather they can feed easily without venturing too far from breeding sites. With the high energy that a good food supply brings, comes the spectacle of fast screaming parties on fine summer evenings. On cool weather days, action can be much reduced or non-existent.

Swift on the wing



Swifts try to avoid areas of bad weather, and in doing so can travel long distances to get round areas of rain: sometimes keeping them away from their nest sites. Swift chicks can then rely on their fat reserves, reduce their metabolic rate and become semi-torpid and can survive for several days.

Young non-breeding swifts, looking for nest sites for next year, leave during cool unsettled weather but return when things improve. At the time of writing, which is coinciding with a nice warm spell, these

young prospecting birds have returned to look for sites for next year, while the adults are busy finishing incubating or feeding chicks. These same chicks will eventually make the leap from their Stonesfield nest hole and fly straight to Africa. At some point during our winter they will be feeding over the River Congo, in the centre of Equatorial Africa.

Paul Wren

FoSL:

Friends of Stonesfield Library

Do you enjoy reading?

Could you spare a couple of hours a month?

Come and join the library team. A great volunteering opportunity!

For further details contact
Mike Pollitt (891856)

Marbled White, on the common



Clubs, societies & sport

Stonesfield Gardening Club



There was no talk in July but instead we arranged an outing to Sezincote Garden, near Moreton-in-Marsh. A small group of us (holidays and work getting in the way for some) enjoyed a gentle amble round the sloping landscape that surrounds the surprising, Indian-influenced house.



Like Bourton House Garden up the road, the garden benefits from a spring that feeds the grounds, which has allowed a stream and various ponds to be a recurrent theme throughout. The water is



wonderfully clear and the water lilies were at their best.

It's a very different garden from that of Bourton House, which is full of herbaceous borders, while Sezincote relies on leaf shapes, shades of green and dramatic trees. Both are well worth visiting if you are in the area.

As usual, no talk is arranged for August. Our next talk will be on 4 September on 'Future Proofing' our gardens, by local garden designer Lorraine Brodrick.

Diane Bates

Secretary Stonesfield Gardening Club

www.stonesfieldgardening.info

Stonesfield Football Club

Stonesfield Football Club First & Reserves (16+) are looking for new players for the upcoming season; we play in the Witney & District Premier & Division 3. Training is on a Wednesday from 6 at the Field. If you are interested or want any more information, please contact Jack Barker (07975 863377) or Sammy Hart (07875 625034).

.....

Nice weather for ducks (from p1)



The eagle-eyed amongst you may have noticed slightly fewer families there. This was, in part, due to the Cubs attending the West Oxfordshire District Scout Camp near Stanton Harcourt on the same weekend. They were sending regular updates on their activities that ranged from axe throwing, bingo and even laser-etched woggle-printing. Braving the weather, and 700+ other local Cubs and Scouts, allowed the members of that section the amazing opportunity to see how they are part of something much larger than just their village. A heartfelt thank you to the leaders and parents who gave up their weekend to make this possible.



I always take this opportunity to just remind the readers and residents of Stonesfield that none of these events happen without people to run them. We all love to be involved, and so we are keen to spread that love. Can you bake a cake, or serve some tea? Do you know opportunities through your work to



support local charities or give the young boys and girls an experience they would not normally get? Become a Scout Supporter by joining a mailing list and be part of the fun. There is no commitment, no obligation, but we are always looking for volunteers. Find the form at www.stonesfield-scouts.org.uk/support or Ben at email chair@stonesfield-scouts.org.uk and don't forget you can follow us on Facebook and Instagram - search for [@stonesfieldscouts](https://www.instagram.com/stonesfieldscouts).


Scouts
1st Stonesfield

BECOME A SCOUT SUPPORTER

We are looking for volunteers to help bake cakes, sizzle BBQs, put up marquees and support events from time to time with Stonesfield Scouts.

No commitment.
Just sign up so we know who to ask.

Your help will only be needed a few times a year
but it will be **very** gratefully received.

Sign up at stonesfield-scouts.org.uk/support



Stonesfield Environment Group

Stonesfield Scouts Duck Race

The Environment group members who went to the Duck Race had a great time, and were impressed by the way the Scout Group handled water safety, including advice on avoiding the river due to its worrying state.

Moreton-in-Marsh meeting

The Evenlode Catchment Partnership held a well-attended meeting. Our group was represented there, and found it a valuable networking experience – you can't improve your part of a river in isolation, it requires communities to work together! It was also useful to hear about the experiences in Moreton-in-Marsh, as they are currently living through what can happen if developments are built without infrastructure improvements to cope with them.

Stonesfield River

Members of the group are still testing river water once a month, and submitting the results to Earthwatch, which uses them to facilitate monitoring of river water quality over a wider area.

Inevitably, the group will go quiet over the summer, (though our conscientious river testers will still be at work) but if you are interested in what you have read here and would like to join the group, you will be very welcome. Contact Julie Curran for more details.

juliecurran0@gmail.com

Stonesfield Food Group

Please see Stonesfield Social and Seniors Café, under Notices & News.

Julie Curran

juliecurran0@gmail.com

Tree planters: A Tibetan tree for Sylvia

You may have noticed two new trees planted in the village: a Rowan tree on Pond Hill and a Tibetan cherry tree at the top of Combe Road. They each have several stakes and a metal cage; they were planted by the County Council Highways Department.

The drought before the July rains stressed newly-planted trees and we have been very happy to have had so much rain for the trees we have been planting. The Rowan tree has done well but unfortunately the Tibetan 'birch bark' cherry tree began to drop leaves and has been very stressed. Tibetan cherry trees were first identified in 1908 and have fantastic crimson satin bark between rough brown bands. It takes some time for newly-planted trees to grow roots and make connections with the mycorrhizal fungi that are essential to their health and wellbeing.

An email arrived in my inbox asking if the Stonesfield tree planters could take on the care of the two trees, particularly the cherry tree, so we have extended the mulch around the tree and are watering to support the tree. Fingers crossed it is doing better by August.

We have also found out that the cherry tree has been planted as a thank you to Sylvia Bareham on her retirement, after 46 years working for the County Council Planning Department. Sylvia still lives in the family

home on the Combe Road with her husband Peter and two cats, two parrots and two cockatiels. Sylvia started in the typing pool and worked in numerous roles, with the last five years as the PA to the head of innovation.



'I really enjoyed working for the Council,' she says, 'it was a good place to work, the team were great and above all else the people were lovely.' We wish her all the best for her retirement.

John Sampson

Volunteering at The Repair Café

When I saw the announcement about a Repair Cafe starting in Stonesfield, the whole idea resonated with me. I've always been practical and enjoy fixing all kinds of electrical and mechanical things. As a child I enjoyed taking things apart. The putting it back together in a working condition came later, after much practice! I hate the

idea of something being thrown away when it can be fixed relatively easily and this is the major driving force behind the Repair Café.

Another aspect is the community spirit. It takes a team to run the Repair Café, and cafés like ours are popping up all over the country. They bring together repairers and those bringing in their broken items, each keen to see the item put to use again. Everyone is welcome. There is no charge and the people running the Repair Café readily volunteer their time and skills. I run Forest IT Solutions here in Stonesfield and my specialism in the Repair Café is all things related to computers. As a bit of a general repairer I am also happy to repair anything that comes in that fits my skills set.

If we know what will be brought in beforehand we can prepare in terms of equipment and materials. Then on the day there are the walk-ins. These can be anything, from a simple change of batteries to challenges that are beyond viable repair. It's always satisfying to sit down with someone, diagnose the problems with their item and then finally bring it back to life again. Even when a repair doesn't work out at least we've tried, and if nothing else, we've enriched our lives by coming together as a community. Usually the person bringing the item in will stay with the repairer while it's being fixed, which is a lovely opportunity to get to know people we may not ordinarily bump into. Having the Community Café in the room next door allows people to get together over a drink and some food.

Keith Thornburn

Church news

Church of England Worship at St James the Great, Stonesfield

(Benefice of Stonesfield with Combe Longa)

www.stonesfieldparishchurch.org

Rector: Rev Ralph Williamson,
rector@scbenefice.org, 01993 891872

Churchwarden: Lindsey Sellar
stonesfield@stonesfieldparishchurch.org

St James' Centre bookings:
sjcsbookings@gmail.com

For any enquiries or help, including pastoral support, please do contact us.

From the Rector – Life in its fulness

In June we enjoyed a wonderful celebration of 800 years in the life of St James the Great in Stonesfield. A beautiful display of baptism gowns, photographs and memories on Saturday 17 June was followed by a special service and concert on Sunday, making a fitting celebration of this landmark year. Then we celebrated the Patronal Festival for St James on Sunday 23 July. People have been remarking on the enormous human experience which the church has witnessed over so many years, and how that life continues today.

In July I spent a week of prayer and reading out of the parish, and I returned to hear that several of our community were unwell. There were also funerals in both this parish and at St Laurence, Combe. But that same week we enjoyed a joyful

marriage celebration here at St James, and the beautiful banners in church with multicoloured children's hand prints, made by our school and pre-school children, constantly serve as a happy reminder that the abundant life which Jesus proclaimed and demonstrated includes birth, baptism, childhood and learning, friendship, marriage and family, work and leisure, illness, death and loss, and of course, resurrection. Life, in its fullness.

The central pillar of Christian faith is the Incarnation, the belief that God in his great love came to share the life of his own human creatures. In Christ, God was reconciling the world to himself, sharing our human experience of time and physicality, so that we might also share God's spiritual life, both now and forever. Each day we are grateful for the opportunity to celebrate the gift of life in its fullness. Through our worship and in lives which we aim to live abundantly for others, we offer our thanks, and our worship. Please feel free to join us.

Revd Ralph Williamson
Rector

Services

Sunday 6 August [Ninth Sunday after Trinity]

8am	Stonesfield	Holy Communion [BCP/said]
9.30am	Combe	All Age Worship
11am	Stonesfield	All Age Worship

Sunday 13 August [Tenth Sunday after Trinity/St Laurence Patronal Festival]

8am	Stonesfield	Holy Communion [BCP/said]
9.30am	Combe	Parish Communion
11am	Stonesfield	Parish Communion
7.30pm	Combe	Evening Service on the Green

Sunday 20 August [Eleventh Sunday after Trinity]

8am	Stonesfield	Holy Communion [BCP/said]
9.30am	Combe	Parish Communion
11am	Stonesfield	Parish Communion

Sunday 27 August [Twelfth Sunday after Trinity]

8am	Stonesfield	Holy Communion [BCP/said]
9.30am	Combe	Parish Communion
11am	Stonesfield	Parish Communion

Wednesdays

9.30am	Stonesfield	Holy Communion
11am	Combe	Morning Prayer (9 & 23 August)

STONESFIELD LUNCH CLUB

Stonesfield Lunch Club meets every Weds 11 till 2 (for members) at the St James' Centre.

Lunch Club provides a social occasion, friendship and support for our more mature residents along with refreshments, activities and a freshly cooked 2-course meal each week.

Volunteers are always welcomed for many roles and this is a lovely way to be involved in village life. Contact me if you would like more information on becoming a member or in volunteering.

Kate Harris 01993 898781 or kateharris58@yahoo.co.uk

.....

Stonesfield Methodist Church

Services for August

- Sunday 6 11am Keith Crawford
- Sunday 13 11am The Reverend Fred Ireland
- Sunday 20 11am The Reverend Ian Worrell
- Sunday 27 11am Local Arrangement

Make haste

An experience recently made me think more about the big discrimination subject. Someone travelling in a terrible hurry found me to be very slow and said I was 'playing the age card'. The words were not spoken in jest, but I have passed three score years and ten. It's sad that time is often crucial to life's expectations, and frequently necessarily so.

We hear of discrimination issues daily in the newspapers and on social media,

leading us to question right from wrong, and to pray for a just outcome. Simple words can lighten thoughts, and these written by Rudyard Kipling (1865-1938) in his poem *The Ladies*, are simple enough.

*Colonel's Lady
an' Judy O'Grady
are sisters under their skin.*

*There is neither Jew nor Gentile, neither
slave nor free, neither male nor female,
for you are all one in Christ Jesus.*

Galatians 3; 28

Come to a service soon.

Kathleen Albért (891733)

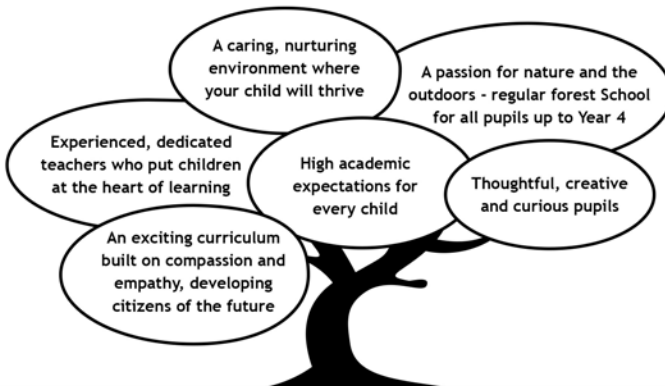
Stonesfield Primary School

Learning together to achieve our best.



Looking for a friendly, inclusive, local school for your child?

Stonesfield Primary School has places in all year groups - we would love to show you around.



To arrange a tour with the headteacher, please contact the school office.

Tel: 01993 891687

Office email: office.2353@stonesfield.oxon.sch.uk

Headteacher email: head.2353@stonesfield.oxon.sch.uk

Roman Catholic Worship

Be not afraid

Life is full of fear and terror for us; there is so much to frighten us: violence, the unknown, change, illness, poverty – fear has always been with us. This is acknowledged in the Bible, where there are many references to fear, or more precisely exhortations of not to be afraid.

Isaiah 41:10: *Do not fear, for I am with you, do not be afraid, for I am your God; I will strengthen you, I will help you, I will uphold you with my victorious right hand.*

Isaiah 41:13: *For I, the Lord your God, hold your right hand; it is I who say to you, 'Do not fear, I will help you.'*

In the New Testament, Jesus continues to encourage us to be brave and not to be fearful. In particular, the linkages of faith and fear are especially powerful with Jesus asking his disciples (and us) why are we afraid? Why don't we trust in him? Why don't we have faith in his teachings and promises?

In the famous episode when Jesus walks on water, we see Jesus calming fear with reassurance:

Matthew 14:26-2: *But when the disciples saw him walking on the sea, they were terrified, saying, 'It is a ghost!' And they cried out in fear. But immediately Jesus spoke to them and said, 'Take heart, it is I; do not be afraid.'*

At the Last Supper, Jesus comforts us in our fear:

John 14:1: *Do not let your hearts be troubled. Believe in God, believe also in me. And in John 14:27: Peace I leave with you; my peace I give to you. I do not give to you as the world gives. Do not let your hearts be troubled, and do not let them be afraid.*

All we have to do is let go of our fear and trust in Jesus.

Holy Mass

Sunday Mass at 9.15 am

Wednesdays and Fridays at 9.15 am

www.stteresaschurch-charlbury.com/

For parish updates, any further information and further support, please see www.stteresaschurch-charlbury.com/ or contact Fr. Clive Dytor, parish priest chair. stteresaschurchcharlbury@gmail.com.

Roman Catholic Community in Stonesfield

best-one 

Suriya Express & Post Office

1 Pendle Court, Pond Hill, Stonesfield
Tel/Fax 01993 898379

=====
Bread & Pastries
Fine range of Groceries
Fruit & Vegetables
Beers, Wines & Spirits
New range of Organic Products
Dry Cleaning

=====
Opening hours:
Monday to Friday 7am-8pm
Saturday and Sunday 8am-8pm*
Bank Holidays 8am-8pm*

**P.O. closed on Sundays & on Bank Holidays*



All aspects of roof work undertaken

Slates • Tiles • Flat roofs
Chimneys • Valleys • Leadwork
Moss clearance
UPVC fascias • Soffits • Gutters
Advice and estimates free

Freephone
0800 955 5063

Mobile
07817 792194

WOODSTOCK TAXI SERVICE

07766 743081



TOWNHOUSE

● EXECUTIVE TRAVEL ●

- Airports & Stations
- Day trips & tours
- Hospitals & Schools
- Weddings & Proms
- Theatres & Restaurants
- Shopping trips

Our friendly team includes female drivers

www.townhousewoodstock.co.uk



JEM CHIMNEY SWEEPING

- NO FUSS •
 - NO MESS •
 - NO PROBLEM •
- Tel: 01865 772996

Are you local?

You could advertise your
business here from
£3 per month.

The Slate is free and 900 copies
are delivered monthly to all
households in Stonesfield and
Fawler.

For details email
slate-ads@stonesfield.online



Your local family run pest control company. Let us take care of your home and make it pest free. Call our office for a free pest control survey. Fully trained and insured pest control experts.

 [07481553551](tel:07481553551)

 sales@oxfordshirepestcontrol.uk

www.Oxfordshirepestcontrol.uk



Back or Joint Pain?
Pre or post operative rehabilitation?
Need to improve strength or fitness?
Feeling stiff and inflexible?

Address muscle imbalances, improve posture, develop your core and build fitness through individual Pilates sessions in our Stonesfield studio with reformers, tower, chair and more

Call Lucy on 07484901615 or email info@resiliencepilates.co.uk



COTSWOLD GARDEN DESIGNER

- Looking to improve your outside space but stuck for ideas on how to make the most of it?
- Want somewhere to entertain?
- A space for your children to play?
- Or maybe you just need a quiet place to relax, a calming, scented corner, just for you?



I can provide a full garden design, planting plans or a simple garden report - some ideas of how you could best use your outdoor space and the types of plants that you like and would suit the environment.



CONTACT LORRAINE:

lorraine@cotswoldgardendesigner.co.uk
07516262560
www.cotswoldgardendesigner.co.uk

Enjoyable and friendly art classes

Drawing and painting
Still Life

For more information contact
gabrielekern31@gmail.com

Dog-walking service

Do you work long hours and feel that your dog is not getting the attention and exercise that it needs? I run a dog-walking service for Stonesfield and surrounding areas. I have public liability insurance for peace of mind. Please feel free to call for a quote.

Katrina 01993 891131 / 07824357690
katrinamoss1979@icloud.com



windrushgroup

print | design | web | large format

Celebrating our 50th anniversary, we have been delivering our print expertise to a wide variety of clients from the smallest personal project through to much larger organisations. We pride ourselves in delivering the same level of service for all.



01993 772197

Chris@windrushgroup.co.uk
www.windrushgroup.co.uk

Windrush Group, Windrush House, Avenue Two,
Station Lane, Witney, Oxfordshire OX28 4XW



BLINDS AND CURTAINS

by

WINDOW DESIGN

01993 870606

Made to Measure
blinds and curtains

Complete home service
from measure to fitting

Huge range of fabrics

Fabric showroom open
by appointment

[WWW.WINDOWDESIGN.CO](http://www.windowdesign.co)

M J Fyson BA BA VetMB MRCVS
The Coach House Veterinary Clinic Ltd
Wroslyn Road
Freeland
Nr. Witney
Oxon OX29 8AQ
E-mail: coachhousevet@outlook.com



We are a traditional independent small animal
Veterinary Clinic

- Opening hours: Mon-Fri 08:00-18:30, Sat 09:00-12:00
- Consultations by appointment only, please phone 01993 880551
- Friendly personal service for dogs, cats and small furries
- Stockists of Symply and Canagan pet foods
- Follow us on Facebook: Coach House Veterinary Clinic

01993 880551

www.coachhousevetclinic.co.uk



Rob Atkinson

Member of the
Chartered Institute of Building

General property
maintenance and
high quality DIY



General repairs
All carpentry - Decorating
Minor plumbing

Prompt, reliable and
recommended service
No job too small

Tel: 07876-275300

robatkinson.ajdw@gmail.com

"A job done well"

Stan Johnston Painter and Decorator

With over 35 years experience in the
trade.

✉ sjohnstonpaint@outlook.com

☎ 07968 865251 or 01993 898730

Roberts Garden Machinery Ltd



- Professional servicing and repairs of most makes of garden machinery
- New & second-hand machinery supplied
- Collection & delivery by arrangement

18 years' experience with **LAWNMOWER SALES & SERVICE**

Open 8-5 Monday-Friday, 8-12 Saturday

Unit H5, New Yatt Business Centre, New Yatt, OX29 6TJ

Tel: 01993 881320 or email: robert.milloini@btinternet.com

ACE

Car Repairs and Servicing
01993 700041

SERVICING, BRAKES, CLUTCHES, AIR CONDITIONING, EXHAUSTS,
DIAGNOSTICS, MOT'S PREPARED AND ARRANGED

Alan Claridge Engineering is a garage in Witney that has been repairing cars for over 30 years. I now live in Stonesfield and will collect your car from your house and deliver it back free of charge. I service and repair all makes of car so please call me to arrange an appointment.

A.L. SOLE & SON

FUNERAL DIRECTORS

Bidston Close · Over Norton · Chipping Norton · OX7 5PP
01608 644112
office@solefunerals.co.uk
www.solefunerals.co.uk



Your local independent funeral director since 1948.
Providing a considerate and appropriate service
with a refreshingly normal approach.

*24hr Service
*Private Chapel of Rest
*Pre-paid Funeral Plans



PELLMANS Solicitors

- **Business, Agricultural and Employment Law**
Contracts, Legal Compliance & Disputes
- **Property**
Buying & Selling Homes, Commercial & Agricultural
- **Wills, Probate and Trusts**
Tax Planning, Lasting Powers of Attorney & Elderly Client Advice

01865 884400

www.pellmans.co.uk

1 Abbey Street, Eynsham, Oxford OX29 4TB

Home visits and evening appointments available



**THAMES VALLEY
TREE CARE LTD**

Founded in Stonesfield.
Providing a professional, reliable and innovative service in all aspects of tree surgery and hedge management

FREE no obligation quote

Tel: 01993 891381
Mob: 07971018279
Email: info@tvtreecare.co.uk
www.tvtreecare.co.uk

DIRTY CARPETS, UPHOLSTERY, RUGS



Most carpets dry within the hour
Unbeatable results, removes almost all spots & stains
call
GRIMEBUSTERS

01993 868924 01865 726983
www.grimebusters.co.uk

Tracey Keeling



Personal Trainer

The Older Adult Training Specialist

Any age is the right age to exercise.
(Face to face or on-line)

07977 228756

www.hardenhealthandfitness.co.uk

COMPUTER PROBLEM?

DON'T WORRY – HELP IS AT HAND!

With a happy smile and definitely no jargon, we've been helping users and their computers for over thirty years. We have extensive experience of the University system, and we know all about Apple Macs TOO!


RING BOB ON: 01865 880600 / 07768 732123

We come to you with same day service if possible.
We don't charge for the call-out or if we can't fix it.

Sewing & Alterations
... to make that garment fit you!

Fittings, hem levels, and a varied range of alteration and sewing work carried out.
Dresses, Skirts, Tops, Shirts, Jackets, Trousers, Curtains, Cushions and beyond!

Louise Everett-Brown
lou.smiley1@btinternet.com
01993 813873



Lighting Your Way Into The Future

STEPHEN J. WILEY
ELECTRICIAN

Additions • Alterations • Rewiring
Surveys • Security Lighting
Cookers • Showers
Telephone Points

NO JOB TOO SMALL

Tel (01993) 882778/881409

90 Main Road, Long Hanborough, Witney, OX29 8JY
Stephen.Wiley@btconnect.com

OXAD

Stonesfield's new Architecture and Design Studio

- All planning applications
- Listed building consents
- Building Surveys
- Renovations, conversions and new build projects
- Full design packages from concept to construction

Need advice? We are happy to help, feel free to call us



<https://www.instagram.com/oxa.design/>



Andrew 07462879191

Andrew A. Adams FCCA

Chartered Certified Accountant

Quality personal service for your
Accounting, Taxation and Business needs

Competitive fees agreed in advance

Free initial meeting

Telephone: 07790 854574
01993 891280

Email: aaadams@TalkTalk.net

Foot Health Professional

Joanna Attridge
MCFHP MAFHP



Foot problems?
I will visit you in
the comfort of
your own home

07961 620 292

joannafoothealth@gmail.com
www.joannasfoothealth.co.uk

Based in Combe
Fully qualified and insured

onevillage.com

One place to go for interiors

Online & On the A44 in Woodstock

The social choice
WORKING WITH
CRAFTMAKERS' CO-OPS
IN ASIA & AFRICA
SINCE 1979



TOWN & COUNTRY TREES LIMITED



A tree surgery company with
the integrity you can trust.

Tel: **0845 458 2980**

Mobile: **07976 261850**

Email: info@townandcountrytrees.co.uk

www.townandcountrytrees.co.uk



Luxury, natural artisan soap and
aromatherapy skincare products,
handmade in Stonesfield.
Speciality orders undertaken.

Tanya Bainbridge

West Winds, The Ridings,

Stonesfield

01993 891949

Visits by appointment

www.stonesfieldsoap.com

info@stonesfieldsoap.com



Perfect Finish

Hand Ironing Service

- Fully Insured
- Collection & delivery
- Shirt ironing and hanging service
- Clothing, bedding and linen
- Based in Stonesfield

Contact Marie: 07969 685 479

perfectfinishironing@hotmail.com

www.perfectfinishironing.co.uk

JUNIOR TAE KWON-DO

The Korean art of Self-Defence

Develop your children's self-confidence, concentration and help them to learn respect for themselves and others.

New lessons developed to be fun and informative for ages 5-17.

Stonesfield Village Hall

Mon and Thur: 5.30-6.30pm

****Come and try a complimentary session****

ITF registered international instructor
James Kumar CRB vetted

Further information, contact James
01865 772883 07788 583 965
Jameskumar@hotmail.co.uk

Stonesfield Tennis Club

The club was established over 100 years ago with membership open to all at very competitive subscription rates. The two astro-turf tennis courts were re-laid in 2018 and are in excellent condition with plenty of court availability.

Phone: 07795 441986
(Andrew Tacon; Chairman)

Website:
[https://clubspark.lta.org.uk/
StonesfieldTennisClub](https://clubspark.lta.org.uk/StonesfieldTennisClub)

Email: stonesfieldtc@gmail.com
Facebook: [@stonesfieldtennisclub](https://www.facebook.com/stonesfieldtennisclub)
Instagram: [@stonesfieldtennis](https://www.instagram.com/stonesfieldtennis)

Andrew Brady GARDENING SERVICES

Mowing (striped)
Hedges (incl. box balls etc.)
Tidying
Strimming
Plant care
Borders
Etc.



Full day (8hrs) £160 Half day (4hrs) £90

Tel **07921 585 187**





New Miss Molly products in stock

Please note new shop hours now open 10am -3pm*
All picture framing by appointment only.

*Closed Tuesdays & Sundays

Cotswold Frames – Market St – Charlbury – OX7 3PL
01608 811805
www.cotswoldframes.co.uk
info@cotswoldframes.co.uk



Maeve O'Donnell Acupuncture

**Acupuncture for stress reduction,
pain relief, arthritis, migraine, fatigue,
hormone imbalance, and more.**

Appointments available at my Stonesfield
clinic or in your own home.

To find out more or arrange an initial
consultation please contact me on 01993
898102 / 07791 278618

maeve@maeveodonnellacupuncture.co.uk
or visit

www.maeveodonnellacupuncture.co.uk
f @maeveodonnellacupuncture

Woodstock Solicitors

WILLS ~ PROBATE ~ POWERS OF ATTORNEY

INHERITANCE TAX PLANNING

Tel. 01993 811 792

Email info@woodstocklaw.co.uk

Woodstock Solicitors - 1st Floor - 32 New Road - Woodstock - OX20 1PB



Hypnotherapy

For help with anxiety, stress, pain control, insomnia, phobias, unwanted habits, confidence and self-esteem, exam and interview nerves.

Contact: Linda Flanigan
Clinical Hypnotherapist
GHR Registered & Member (Lic.) of National Council for Hypnotherapy

Tel: 07866 360359
Email: linda@lfhypnotherapy.co.uk
www.lfhypnotherapy.co.uk

Imagine Life

if you had your own...

Gardener
Decorator
Babysitter
De-clutterer

I can help you clear your clutter, weed out your wardrobe and find new homes for your unwanted items.

Dog Walker
Spring Cleaner
Moving House Help
House & Pet Sitter...

all rolled into one!

For one-off events or regular help please contact Lindsey
hatsoffstudios2@gmail.com or call
01993 898620 07941 561471

SOUND BATH

Join me for a crystal bowl sound bath

The vibrational frequencies of crystal bowls have the ability to

- Effectively reduce stress and anxiety
- Relieve physical pain
- Improve mental and emotional clarity
- Cleanse and balance the chakras
- Stimulate the immune system

South Leigh Village Hall

Thursday evenings from 7.00pm-8.00pm

Booking is essential as places are limited

Email ros@crystalsoundstherapy.com for details

Insta [@crystalsoundstherapy](https://www.instagram.com/crystalsoundstherapy) www.crystalsoundstherapy.com



MICHAEL PRICE & SON PLASTERING

58 Ticknell Piece Road
Charlbury, OX7 3TW

Tel 01608 811642
Mobile 07710 170049

GEOFF BOOTH

Landscaping • Paving • Walling
Driveways • Fencing • Brickwork
Building maintenance
Garden maintenance
Free quotations
Tel: 01993 891945
Mob: 07710 628248

Email: geoffboothlandscaping@hotmail.com

Rita Hutchings

Painter & Decorator

Internal & External.

Quality work.

Clean, efficient, friendly worker.

Contact me for free estimates.

01993 772078 or 07826 011560



PRICE LIST

1 BUILDERS BAG £90.00

2 BUILDERS BAGS £175.00

3 BUILDERS BAGS £250.00

**PRICE INCLUDES VAT AND DELIVERY WITHIN
10 MILES OF LONG HANBOROUGH**

☎01993 880 500

✉ info@bowards.co.uk

PROBLEM FEET ?!

NAIL CUTTING. CORNS. CALLOUS.
HARD/DRY SKIN. FOOT MASSAGE.

**TREATMENT IN THE COMFORT
OF YOUR OWN HOME!**

Sharon Davies MCFHP/MAFHP

01993 891132/ 07941843353

OVER 18 YEARS EXPERIENCE

**REGISTERED MEMBER OF THE BRITISH
ASSOCIATION OF FOOT HEALTH
PROFESSIONALS**

Bed and Breakfast at Combe

For details
please view

www.greenclose.net
or call 01993 891223

A. K. P. DIXON

Home & Garden Maintenance
& General Handyman

For all those jobs you need doing
inside & outside – I'm your man!

Call Ade on 01993 813873

or 07825 631111

or email handymanade@btinternet.com

PJR Plumbing & Heating

- * Installation
- * Maintenance
- * Repair & Service
- * Gas Appliances & Safety Certificates



Tel: 01993 881069

MOB: 07515 733398

500807

D S JONES

BUILDING, ROOFING

&

PROPERTY MAINTENANCE

All aspects of building, roofing and property maintenance undertaken

For all enquiries call or email

07496149990

dsmaintenance@hotmail.com

Instagram: @dsjonesbuilding



WORCESTER
Bosch Group
Accredited Installer



DJR MILES

BATHROOM, PLUMBING & HEATING ENGINEERS LTD

www.djrmiles.co.uk

 BATHROOM & PLUMBING


 GAS & OIL HEATING SYSTEMS

 RENEWABLE HEATING SYSTEMS

t: 01993 891533 m: 07860 142230

e: [djrmpheltd@yahoo.co.uk](mailto:djrmbpheltd@yahoo.co.uk)

We care, when it matters most.



An award-winning local family business
trusted by families for over 60 years
with a first class reputation for quality,
value and service.

“Invaluable support”

“Seamless arrangements”

“Nothing was too much”

“Sympathetic and professional”

Above are just some of the many touching
comments we have received about our service.

Learn more about us at

www.jerramsbrothers.co.uk or call us at any time.

Jerrams Brothers

Funerals Funeral planning Memorials Support Est.1949

33 High Street Woodstock OX20 1TE 01993 811491
18 The Kidlington Centre, Kidlington OX5 2DL 01865 374444





BLenheim PALACE

Blenheim Palace Adventure Play Quest – Saturday 8th July to Friday 1st September

This summer, we are offering a family the chance to win a unique bumper prize package with our summer-long Quest! Whilst having hours of limitless fun, young explorers can track down 11 clues hidden across the different zones to be in with a chance of winning the top prize of a 10-year Family Annual Pass to Blenheim Palace, 10 family of four visits to the Adventure Play, a week-long stay at the Blenheim Palace Lodge Retreat by Darwin Escapes, a VIP family of four Christmas Palace and Trail Experience, an Afternoon Tea, a Pizza Meal in the Walled Garden and a Blenheim Palace hamper of goodies. Head to our website www.blenheimpalace.com/adventure-play/ to join the Quest now... and good luck!

BLenheim

Back in June we held our annual Start-up Competition at Blenheim Palace, which launched in 2018 to support and mentor local businesses. We are thrilled to share that the winner was Sally Dear, founder of children's clothing brand Ducky Zebra. Her bespoke designs, which are vibrant and eco-friendly, aim to inspire confidence, kindness and break gender stereotypes for babies and children up to 6 years old.

Keep an eye out for Sally's extraordinary collection, soon to be available in our Blenheim Palace shop.



BLenheim ESTATE

Our Gardening Team have been working hard restoring the Secret Garden, which has always been a cherished part of our visitors' experience. It was established in 1954 and was originally the 10th Duke's secret sanctuary, showcasing various woodland species alongside flowing water and winding pathways. Over time, the space had become overgrown, and nature had begun to take its course. A fence has now been erected around the perimeter to keep wildlife out and ensure the plants in the Secret Garden can thrive. Why not take a peaceful walk there on your next visit to see the changes for yourself?

Keep up-to-date with our news and latest events by signing up to our newsletter at

blenheimpalace.com

FLOWERS

ESTATE AGENTS



"The Agent of choice in Woodstock and the surrounding villages "

Call 01993 627766 for confidential advice on all property matters.

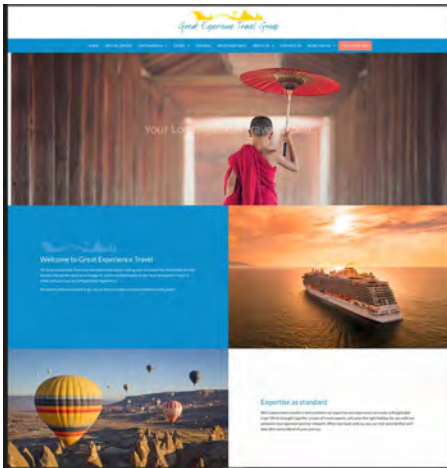
RESIDENTIAL SALES & LETTINGS | LAND & NEW HOMES

woodstock@flowersestateagents.com | flowersestateagents.com

LONDON HOUSE, 16 OXFORD STREET, WOODSTOCK, OX20 1TJ



Our fabulous new website:
www.greatexperiencetravel.co.uk
 is now up and running



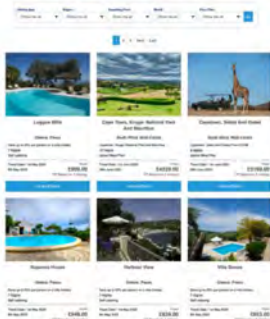
It has lots of exciting new features, and we think that the website looks great. However, it is still a 'work in progress' and has to meet your needs.

If you can see anything that we can do which would make the site even better or even easier to use, please do let us know.

It doesn't mean that we don't want to see you in the office.

This is still our No.1 priority.

The site will just help you find even more holiday options and will make the service that we can offer you even better.



Waterloo Walk, High Street, Witney, OX28 6EU

Tel: 01993 627815

email: info@greatexperiencetravel.co.uk

www.greatexperiencetravel.co.uk



***The Stonesfield
Evenlode Bench***

*This bench was
created at the end
of Well Lane for
all villagers to
have a restful view
of the Evenlode
meandering
through the
river valley
below Stonesfield
Common.*

