



Aragon – a kite's tale



From Chrissie Gaines:

When the phone rings I am always prepared to grab my equipment and rush out of the door. For the last twenty years I have run a volunteer bird of prey rescue service - the equivalent of being a first responder for our avian friends. You never know what a day will bring.

The Monday after King Charles's coronation I received a call from the Gateway School in Carterton, Oxfordshire. The children had found a red kite outside the school which was in a bad way. I told them my husband Phil and I would be there in roughly 25 minutes, as it was a 12-mile journey.

On arrival we were met by two teachers who had the kite in a box. Its injuries were shocking – its head was bleeding from wounds inflicted by Corvids, together

with further bleeding to damaged wings and feet. The bird was also very thin and weak.

I alerted my vet and rushed the kite straight to the veterinary clinic for examination and treatment, where an antibiotic injection was administered, and all his wounds treated.

When we returned home, I lay him on a soft towel with a heat pad underneath. My vet advised to try to get the bird to eat. Once he'd settled a while, I cut up two large mice and successfully fed them to him by hand.

While examining the bird, I found he had a British Trust for Ornithology (BTO) metal leg ring, which each carry a unique identity number.

Continued on page 5

Do you want to send in an article but have no email?

Just call the editor (see below) who can arrange to collect your handwritten copy.

Do you want to advertise?

An advertisement in *The Stonesfield Slate* starts from as little as **£3 per month**.

Please email **slate-ads@stonesfield.online**, or call the Publishers on 01993 898841, for full details of availability, sizes, requirements and cost. We can also help with design if required.

Any new advertisements, or changes to existing advertisements, should be emailed to **slate-ads@stonesfield.online** **by 10th of the month**.

All advertisements must be **paid for in advance**.

Disclaimer

The Stonesfield Slate is a village amenity, produced and distributed by volunteers. It cannot be held responsible for any of the views expressed in its pages nor does it endorse any of the products or services advertised.

Articles are solely the responsibility of the writers and their opinions do not necessarily accord with those of the editors or publishers.

Whilst we strive to ensure all information is correct, we are not responsible for anything that happens as a result of you using the information. If you find any errors or omissions then please contact the Publisher and we will endeavour to correct them.

Dates for your diary are always subject to change. Please check with event organisers.

The editor and the publishers reserve the right to edit, shorten or omit any article submitted.

Publishers

Diane & Paul Bates,
Waterloo Barn, Laughton Hill,
Stonesfield, OX29 8DY
(898841)
slate-pub@stonesfield.online

Editor for Aug issue

Viv Kendall
(891803)
slate@stonesfield.online

Copy:

Deadline for next issue 15 July
Please email copy to
slate@stonesfield.online
or contact the Editor by phone.

Editor

Viv Kendall
(891803)
slate@stonesfield.online

Printer

Windrush Press, Witney

©TheStonesfieldSlate 2023

Advertising:

Deadline for next issue 10 July
Advertisements to
slate-ads@stonesfield.online

Current and past copies of the *Slate* are available at www.stonesfield.online

Dates for your July diary:

| | | | |
|--------------|-----------------------------------|---------------------------|--------------|
| 1 | Plaza Suite – Stonesfield Players | Village Hall | 7 for 7.30pm |
| 1 | Romeo and Juliet | Churchill OX7 6PH | see p12 |
| 1, 2 | Combe Art Show | Reading Rooms | 10am–4pm |
| 2 | FoSS Summer Fete | Primary School | 12–4pm |
| 3,10,17 | Monday Coffee | St James' Centre | 8.45–11.30am |
| 3,6,10,13,17 | Taekwondo | Village Hall | 5.30–6.30pm |
| 3,5,10,12,17 | Hannah Bathe HIIT Class | Village Hall | 7–8pm |
| 4,11 | Seniors' Café | Village Hall | 3–4pm |
| 4,11 | Stonesfield Social | Village Hall | 5–7pm |
| 4,11,18,25 | Zumba | Village Hall | 7–8pm |
| 4,11,18,25 | Strong Nation HIIT | Village Hall | 8.15–9.15pm |
| 4,11,18,25 | Carers' Café | Village Hall | 10am–12noon |
| 5 | Parish Council meeting | Primary School | 7pm |
| 5,12,19,26 | Gatehouse Pilates | Village Hall | 9.30–10.30pm |
| 5,12,19,26 | Folk Dancing | Village Hall | 7.45–10pm |
| 6,13,20 | Book Break | Library | 12.30–2pm |
| 7,8 | Woodstock Music Soc concert | St Mary's, Woodstock | 7.30pm |
| 7,14,21,28 | Baby & Toddlers | Village Hall | 10am–12noon |
| 8 | Community Café – Chrissie's Owls | Village Hall | 10am–2pm |
| 8 | Charity Bike Day | Stonesfield Playing Field | 2–11pm |
| 13 | Gardening Club Visit | Sezincote | 11am |
| 13 | Stonesfield Players Auditions | St James' Centre | 7.30pm |
| 15 | Scouts' Duck Race | River | 5pm |
| 16 | Open Day | Bridewell Gardens | 11am–4pm |
| 19,24,27,31 | Hannah Bathe HIIT Class | Village Hall | 7–8pm |
| 20,24,27,31 | Taekwondo | Village Hall | 5.30–6.30pm |
| 22,23 | Roman Villa Open Day | North Leigh | 11am–5pm |
| 24, 31 | Monday Coffee | St James' Centre | 10–11.30am |

August

| | | | |
|---|----------------------|-------------|----------|
| 2 | Roman Villa Open Day | North Leigh | 11am–5pm |
|---|----------------------|-------------|----------|

Notices & news

Friends of Stonesfield School (FoSS)

Friends of Stonesfield School (FoSS) works with the school to enhance the children's experiences and access to resources. We are always looking for local people with fundraising ideas and to help with the events. We meet every 4-6 weeks and commitment can be as little or as much as you like. Contact: info@fossteam.org if you would like to join us.

We are busy planning our Summer Fete, which is due to be held on Sunday 2 July from 12 noon - 4 pm. We are recruiting volunteers to help with setting up marquees and also to help with running stalls. If you would like a stall or would like to volunteer your time, please contact us via email or sign up at: www.volunteersignup.org/LJP4D.

Charity Bike Day

A date for your diary: 8 July at Stonesfield playing field from 2-11pm – we are running this event again and hopefully this year the weather will be more clement and not quite so hot as last year. Please come along and enjoy yourselves, and take a look at the varied motorbikes attending. We will come around during the event asking for contributions to raise funds to support our chosen charities: The British Heart Foundation, Cancer Research and several local charities yet to be announced.

The Stonesfield Sports & Social Club will provide an all-day bar and food will be

available for purchase. Scoops Ice Cream will also be attending and various bands will be playing during the afternoon and evening for your entertainment.

We look forward to seeing you all there.

Andy Gillam, Fred Dore, George Williams and Roger Evins

Contact: Roger on 01993 891715

Village Hall News

Once again there has been a name change for the Tuesday evening Social – rather than change for each season it will simply be ‘The Stonesfield Social’ from now on. The Stonesfield Food Group has been as busy as ever even with the hot summer evenings, with over 80 meals feeding the community last week! Please remember there is the opportunity to have take-out for those who do not wish to stay, or for those who are housebound – please support your neighbours by offering to collect for them (please bring a suitable receptacle).

June's Repair Café was again a huge success, alongside the Community Café which served lovely cakes, soup and desserts. July's Café on 8 July is for Chrissie's Owls so do come along to sample the refreshments on offer and for the opportunity to meet some of the owls.

Do get in touch if you would like to take advantage of our venue with its FREE Community Café slots on the first Saturday of each month; August and October are still available, and plan ahead for 2024! If

there is a cause you are passionate about, this is an excellent opportunity to raise awareness and funds for it.

The Carers Café is held on the second and fourth Tuesday of each month. It's a great opportunity for carers to escape and have a breather, and give yourself an hour to relax in a warm and friendly environment.

Jacqueline Carthew (898919)

Secretary & Booking Clerk for Stonesfield Village Hall

stonesfieldvh@gmail.com

Chrissie's Owls

Donations of cakes would be really welcome for the Chrissie's Owls fundraising event on 8 July. Please either drop them off at The Gables, Woodstock Road or phone 07776 254469 and we can collect. Let's get baking for the owls!



**JOIN US AT THE NEXT COMMUNITY CAFÉ FOR
TEA, COFFEE & CAKE!**
ENJOY A CUPPA WITH FRIENDS OR POP ALONG FOR TAKEAWAY CAKE!

**09.30AM - 13.00 PM
SATURDAY 8TH JULY
STONESFIELD VILLAGE HALL**

A FUNDRAISER FOR STONESFIELD-BASED
CHRISSIE'S OWLS & STONESFIELD OWL RESCUE

**IN ADDITION TO CAFÉ:
MEET CHRISSE & SOME OWLS!
FIND OUT HOW TO ADOPT AN OWL,
NEW/NEARLY NEW BRIC-A-BRAC STALL**

Chrissie's Owls

Aragon – a kite's tale (cont from p1)



Chrissie with Aragon

A friend who is a BTO ringer was able to check the number and found the kite was an amazing 29 years' old! He was part of a batch that had come over from Spain to be released in the Chilterns in 1994, so we named him Aragon, after the region in Spain.

After two days, Aragon was looking better and eating more food. On day three our initial hopes were dashed when his condition began deteriorating. The vet administered another antibiotic injection, but warned Aragon had a 50-50 chance survival. He still wanted to eat but was unable to keep food down. The outcome was not good. Aragon passed away on the Saturday. This amazing bird has brought so many people together, I will do my best to make sure he is never forgotten.

Chrissie Gaines

chriessiesowls@gmail.com

www.chriessiesowls.com

Stonesfield Lunch Club 25th Anniversary Party

The Stonesfield Lunch Club has been running for 25 years! We marked the occasion with a celebratory party, inviting our current members, and everyone who has been involved with running the club over the years. We have a volunteer base of over 40 people who help with running the day, cooking the meals and driving those members who are less mobile.



We had a fabulous time, shared memories and photos of years gone by, scoffed cake and munched on sandwiches and party food, all prepared by our great team of cooks.

Kate Harris, our current chairman thanked everyone for their involvement, including our past chairman Anne Bishop who was in place for many years, ably assisted by Mary Plumridge.

We thank you all...too many of you to name individually, who make the club a happy place to be each week for our members and they appreciate it very much.

New volunteers are always needed and it's a lovely way to connect to the community.

Kate Harris (898781)

Stonesfield Lunch Club

Stonesfield Lunch Club meets every Wednesday 11am to 2pm (for members) at the St James' Centre.

Lunch Club provides a social occasion, friendship and support for our more mature residents along with refreshments, activities and a freshly cooked 2-course meal each week.

Volunteers are always welcomed for many roles and this is a lovely way to be involved in village life.

Contact me if you would like more information on becoming a member or in volunteering.

Kate Harris (898781)

Children's Play Area – no more footballs please

The Children's Play Area and its equipment is designed for use by children of 12 and under. This is to ensure the safety of little ones and to prevent them from being intimidated by older children. Older children are not prohibited from entering the play area, as they may be supervising siblings but they are requested not to use the equipment.

The use of full-size footballs in such a small area is unsafe and inappropriate, particularly as there is the rest of the playing field and the Multi Use Games Area (see p27) to play on. The Playing Fields Association has therefore decided to ban the use of footballs in the Children's Play Area and it will be putting up signage to that effect.

Fiona Dangerfield (07814 112437)
Stonesfield Playing Field Association

Stonesfield Pre-School Holiday Club

We are pleased to announce that we will be running a 3-week Summer Holiday Club. This will start Monday 24 July and run until Friday 11 August. Registration forms can be collected from Pre-School, or you can email stonesfieldpsad@outlook.com.

Costs:

Full day £35.00 per child (second child £32.00)

Half day £20.00 per child (second child £18.00)

Zena Rozee (898012)

Pre-School Administrator

Duck Race 2023



The annual Stonesfield Scout Duck race will be on 15 July from 5pm. There will be a BBQ and a bar, as well as the chance to cheer on your favourite duck.

We need burger flippers and duck catchers this year, as some leaders are also away on a Cub Camp. Please email chair@stonesfield-scouts.org.uk if you would like to help, and ducks will be on sale soon!

Disaster averted



On Sunday 11 June two boys out cycling, from Longore and The Ridings, spotted a fire amongst the straw in the Dutch barn on the Oxfordshire Way.

They alerted neighbours and helped carry buckets of water. Together they contained the fire, preventing it from spreading to nearby grasslands and fields.

Horse riders contacted the emergency services which promptly attended, but by the time they arrived the fire had been doused.

Station Officer Brown, from Witney Fire Station, said. 'It's already been a busy weekend and I would like to thank the two boys. Their quick action saved a potential grassland fire and thousands of pounds' worth of damage. We would like to remind people of the dangers of discarding cigarettes, rubbish and other things that may start or accelerate a fire.'

Paul Bates

A letter from 1st Stonesfield Scout Group

By now most of you will know that 1st Stonesfield Scout Group is 75 this year. The Group was formed on 28 July 1948. Potentially the great grandad of a child currently in Beavers could have been part of the Group!

The Group's success and its continuity over the last quarter century is down to a continuous stream of volunteers stepping forward and doing their best. Scouting provides amazing opportunities and opens doors that stay shut to others, for both the young people and the volunteers who guide them. All it needs is some adults (usually parents) to appreciate this and make a little effort to facilitate the activities and meetings; to work together to understand how Scouting works, then use the resources available to deliver the programme.

Anyone can do it! Especially when a group with different skill sets come together and share their knowledge and ideas. You know now what a difference Scouting makes to your young person's development – confidence to try new things, make new friends, to fail and try again, to not give up.

Some of our volunteers have been around for a while now. Our children are moving on. It's time for the next generation of volunteers to step up. It's your turn. It's up to you – it's your children. It's an exciting time to join our Group. Not only are we 75 this year, but we are building a new hut – a base for us all to enjoy many more Scouting adventures. A place where this year's Beaver Scouts can watch their great grandchild Scouting in 75 years' time?

By the way, we are all incredibly busy just like you. But it is great fun and one of the most rewarding things you can do with your time.

Step forward. Enquire within. You would be most welcome. And you will love it.

Ben Whitworth

chair@stonesfield-scouts.org.uk

Auditions – Thursday 13 July

The Stonesfield Players are holding auditions for two productions on Thursday 13 July from 7.30 pm at the St James' Centre. Old hands and newcomers are both welcome. The auditions are for:

Same Table Next Week by Nicky Holland
A one-act play to be performed on 3 September in the afternoon while the audience has a cream tea. It's a light-hearted comedy following one woman's pursuit of friendship and a new meaning in life after early retirement. It consists of short scenes, so not much learning of lines for most characters.

On 17 & 18 November at the Village Hall, we are doing two one-act plays by local authors, which share the theme of memory and WW2:

The Private Collection by Rebecca Sherlaw-Johnson and David Lines. An old woman struggles with her younger self as she remembers the part she played in WW2 as a spy, and the love that got away.

Can You Hear Me Mother by Nicky Holland. An old woman is trying to survive lock-down, which inspires memories of WW2 and her father.

For more information contact Becki at rebeccasj@btinternet.com.

Plaza Suite: The Stonesfield Players

After its recent revival on Broadway, The Stonesfield Players are bringing to you Neil Simon's classic comedy, Plaza Suite. This uproarious and piercing look at love and marriage portrays three couples who each occupy the same suite at the famed Plaza Hotel, New York at various times of the year.

Performances will take place on Friday 30 June and Saturday 1 July starting at 7.30; doors open from 7pm.

Tickets for both nights are £10 and are available from 1 June from Suriya Express (payment by cash or cheque only) or from Andrew Tacon on andrew.tacon@outlook.com, 01993 891217 or 07795 441986.



Food Banks – easy to donate and a vital resource

Everyone is aware of the rising cost of food these days and of how important food banks have become for many. But how many of us contribute – and if we would like to, how do we go about it?



In Stonesfield, there are several boxes for food contributions in St James' Church and in its porch, and another in the village shop. Every Thursday afternoon or Friday morning, someone from a rota of residents collects what's in the boxes and delivers it to Kidlington Baptist Church, which is one of the drop-off points for the North Oxfordshire Community Foodbank. This is a voluntary group which provides food parcels to people in the Kidlington, Woodstock, Chipping Norton and Charlbury areas. So it's very easy to contribute, without having to make a special trip out of the village.

If you would like to join the band of people who take donated food from Stonesfield to Kidlington for the North Oxfordshire Community Foodbank, please contact Peter Hughes on 891018 or hughes118@btinternet.com. Your help will be more than welcome.



Witney & West Oxfordshire also has a foodbank, to which you can contribute by leaving non-perishable food in collection boxes in the main Witney supermarkets, at the Town Council in Market Square and a number of other points. You can see what's needed by visiting www.witney.foodbank.org.uk/give-help/donate-food/.

Financial donations to both food banks can be made by visiting their websites: www.northoxfordshirecommunityfoodbank.org.uk/ and www.witney.foodbank.org.uk/.

... and if you need food...

Stonesfield Mutual Aid Group will always try to help local residents who find it hard to access the food banks. If you need to know more, please contact Kate Harris on 898781.

Stonesfield Mutual Aid Group, the Stonesfield Food Group and the Lunch Club are currently working together to help residents during the cost-of-living crisis, and to access free food that would otherwise go to waste. The aim is to be able to provide food parcels for those in need. A consultation between them is under way and more information will be available soon.

There is also a weekly community meal available at no charge at the Stonesfield Social at the village hall, every Tuesday 5pm to 7pm using food that would otherwise go to waste. Please see the Food Group entry on p26 for more information.

Viv Kendall,

With thanks to Peter Hughes, Kate Harris and Julie Curran



North Leigh Roman Villa

Set within a peaceful landscape on the banks of the River Evenlode, North Leigh Roman Villa is considered to be one of the largest villas in Roman Britain, with a history of occupation spanning five centuries. At its most extensive in the early 4th century AD, it included three bath suites, 16 mosaic floors and 11 rooms with under-floor heating.



Today visitors can imagine the villa's former richness as they walk through the rectangular footprint of its walls – but the mosaic house hides the real gem: a near-complete mosaic floor. The mosaics form the floor of the villa's winter dining room and, as the only example in Oxfordshire still found in their original location, they give a powerful sense of the villa's original opulence.

We are very pleased to report that our sacrifices to the weather gods proved successful and that the sun shone on our first weekend opening of 2023 at the end of May. Over 250 people visited the mosaics across the weekend – including international visitors, and new British visitors from towns the Romans founded

on the south coast (Portsmouth) and the north (York). We are most grateful for generous donations of over £80 to help restore the site further.

We are delighted that the first small refurbishment step has taken place at the North Leigh Villa site. For years part of the cottage roof has been leaking. This bit of roof has now been replaced, the building is watertight once more and any asbestos-bearing materials have been removed. More substantial refurbishments may be possible this time next year.

Matthew

North Leigh Roman Villa Volunteer

nlrvols@gmail.com

www.english-heritage.org.uk/visit/places/north-leigh-roman-villa/

[@villa_north](https://twitter.com/villa_north)



NORTH LEIGH ROMAN VILLA

Mosaic Open Days

July 22 & 23: 11am - 5pm

August 2: 11am - 5pm

August 19 & 20: 11am - 5pm

September 9 & 10: 11am - 5pm

Join our volunteers at North Leigh Roman Villa for a great chance to see the impressive mosaic close up!

Step into England's story

Woodstock Music Society

Woodstock Music Society Choir and Chamber Orchestra are producing highlights from Handel's *Theodora and Jephtha* on 7 and 8 July at St Mary Magdalene Church, Woodstock. Conducted by Paul Ingram, the performance will feature Eleanor Broomfield (soprano) and William Smith (tenor).

Tickets are £14 in advance from The Woodstock Bookshop or £15 on the door; full-time students are £5 and accompanied children under 16 enter free. You can also book online at bookwhen.com/Woodstock or email concerts@woostockmusic.info.

WOODSTOCK MUSIC SOCIETY CHOIR
WOODSTOCK CHAMBER ORCHESTRA
CONDUCTED BY PAUL INGRAM

HANDEL

The Master Dramatist
Highlights from
Theodora and Jephtha

Eleanor Broomfield: soprano
William Smith: tenor

Friday 7th & Saturday 8th July 2023
St Mary Magdalene Church, Woodstock at 7.30 p.m.
by kind permission of the Rector and Churchwardens
www.woostockmusic.info Reg Charity No. 105087

TICKETS

AT THE DOOR £15 (full-time students £5, accompanied children under 16 free)
IN ADVANCE £14 from The Woodstock Bookshop, 23 Oxford St. cash and cheques only
OR Contact concerts@woostockmusic.info or <https://bookwhen.com/woodstock>

Romeo and Juliet



Students of the Oxford School of Drama will be performing William Shakespeare's play, *Romeo and Juliet*, in the garden at Sarsden Glebe, Churchill, OX7 6PH on:

- Friday 30 June: Doors open 5.00pm for drinks on the lawn; the performance will start at 6.00pm.
- Saturday 1 July: Doors open at 4.00pm for tea on the lawn and the performance will start at 5.00pm.

Tickets are £20 per head, and all proceeds go to the Oxford School of Drama Hardship Fund.

Please RSVP to gemma_chandler@hotmail.co.uk with your request for number of tickets and the evening you would like to attend. Confirmation of tickets and payment details will be sent to you by email.

The performance is open-air, chairs are provided but do wear warm clothes. Bring your own picnic (if you wish) to eat in the garden afterwards.

For any further information please call Rupert or Amanda Ponsonby on 01608 658224.

Bridewell Gardens

Bridewell Gardens, a local mental health recovery service, will be holding an Open Day on 16 July when the walled garden and vineyard will be open to the public from 11am – 4pm.



There will be a pop-up café in the garden for tea and cake and high-quality plants, home-produced jams and chutneys, and organic sparkling wine will be on sale. Make a day of it: bring a picnic blanket and relax in the vineyard with friends and family. Dogs on leads are very welcome, and families and children are encouraged to explore the site.

No booking is required and the suggested donation is £5 per person. Further Open Days will take place in July and September.

Rachel Green

Bridewell Gardens, Wilcote OX7 3DT

2023 — Sat/Sun 1st & 2nd July

Combe Art Show

10am-4pm

Come join us at the Combe Reading room to celebrate the talent of over 10 local artists!



STONESFIELD SEPTEMBERFEST

Sat 9th Sept 2023

Septemberfest is a family friendly music & beer festival raising money for good causes – Cancer Research UK, BBO Wildlife Trust & Stonesfield Village Playground

HOW TO GET INVOLVED

Volunteer: We need bar staff, first aiders, clean-up crew and anyone with fundraising experience. Please get in touch if you can lend a hand!

Sponsor us: You can help in making Septemberfest possible by sponsoring a beer barrel (£150) or even being a Headline Sponsor (£1000) with your name above the main stage! There are various sponsor packages available which include advertising and complimentary tickets.

– please contact Karen Payne on 07769948075 or email us: hello@septemberfest.org.uk

If sponsorship is not for you but would still like to make a contribution we have set up a 'Just Giving' page: <https://www.justgiving.com/crowdfunding/karen-payne-2>
A donation (however small), would be very much appreciated

Volunteers: Please get in touch with a committee member , via our webpage www.septemberfest.org.uk or  Facebook

Neighbourhood Watch Community Safety Charter

Neighbourhood Watch has adopted its Community Safety Charter. This aims to encourage businesses, organisations and individuals to take a stand against crime in public places, including harassment, hate crime and antisocial behaviour. It urges active bystanders to lead change in their communities.

The Charter aims to promote a culture that will not tolerate harmful language, antisocial behaviour and hostility to others; to enable people to identify and take an active stance against these behaviours; to report harmful behaviour and share information about these crimes with the relevant authorities, and to support those affected and refer victims to appropriate support agencies.

For more information go to
www.ourwatch.org.uk/charter.

Anyone interested in joining the Neighbourhood Watch Scheme can find details and register at: www.member-registration.neighbourhoodalert.co.uk/30/Join. Click on 'Join a scheme' and select 'Stonesfield'.

Deanna Asplundh
Stonesfield Neighbourhood Watch
Coordinator

Police and community support

For information or advice on security concerns, please call 101 or contact woodstockNHPT@thamesvalley.pnn.police.uk

Local burglaries

Thames Valley Police are investigating a number of burglaries in Charlbury, Fulbrook and Bodicote which occurred in the first few days of June. On each occasion, two men approached the rear of victims' properties and claimed they were acting on behalf of local water boards. They then gained access to the houses and went on to steal cash and jewellery. They wore facemasks and hats, and were seen in a silver or grey saloon car.

The police have urged people in north and west Oxfordshire to be vigilant and challenge anyone coming onto their property and claiming to come from any company. Ask for ID and if genuine, they will carry some form of identification of the company they work for, and would have no difficulty in showing that.

If anyone has information about these incidents or has experienced something similar, please contact the police via 101 or by the website below, using reference number 43230241045, www.thamesvalley.police.uk/contact/af/contact-us-forms/provide-more-information-to-be-added-to-a-crime-report/.

Politics & local affairs

Stonesfield Parish Council

Parish Council meeting - 7 June

Council was advised that Cllr Graham (County Councillor and leader of WODC) is supporting the cost of the grass cutter / mower for the Playing Fields Association, with councillor priority fund money.

The Parish Council considered one grant request submitted in advance of this meeting from Stonesfield Mutual Aid. The council was supportive of the grant but requires further information, so this will be discussed again in the July meeting.

One planning application, 23/01198/HHD was considered – there was no comment or objection to this. Proposal: Proposed single storey side extension, Location: Wood Green Church Street Stonesfield. Applicant: Rosemary Harris.

The council considered and resolved to re-adopt the following policies: standing orders, code of conduct, internal financial controls, parish risk assessment.

The council considered and reconfirmed that:

- a. SAFER will remain as a Parish Council working group under the direction of the Parish Council. Cllr Mick Heduan will remain as working group lead.
- b. The Neighbourhood Plan Steering Group will remain as a Parish Council working group under the direction of the Parish Council. The Parish Council leads are Cllr Simon Warr and Cllr

Simon Powell, and the Chair is Richard Morris who drives the group.

- c. The Common Group will remain as a Parish Council working group under the direction of the Parish Council. A councillor will be appointed as the link to this working group, as official Council lead, at the next meeting; the group is still advised and guided by Richard Morris.

ALL councillors for the parish form the Council's Finance Committee.

Working groups and Working Group

Lead – working groups and their lead councillors work under council jurisdiction; the Council lead supports the group and reports to the Council. Budget is possible for the working groups and Council leads report on this and provide formal requests for budget (where applicable) on behalf of the group. These working groups work under the direction of the Parish Council and by working under direction, those working on planned works / planned activities are covered by our Parish Council public liability insurance. Any items purchased for working groups are retained as Parish Council assets and are insured by the Council. Risk assessments are also held for each working group activity.

Representatives were appointed by the council to attend group meetings for the following:

- Playing Fields Association – Cllr David Brown

- Solar Farm proposals including Botley West – Cllr Mick Heduan and Cllr Simon Powell
- Village Hall – Cllr Eleanor Bailey
- Stonesfield Community Trust – Cllr Phil McArdell
- White Horse pub – Susan Rudlin will ask if the pub group would like a representative.

Representatives voluntarily attend meetings and gather information / update Council as required for the group meetings they attend. There is no Council budget assigned for the representative or the group. These groups are not run under Council jurisdiction (they are independent).

Council will support and attend the Community Café on 2 December from 10am to 2pm – more details will follow closer to the time.

Date of the next full council meeting:
5 July 2023 at 7pm, in Stonesfield Primary School. There will be no August meeting.

.....
Neighbourhood Plan

“The results are in - what next?” Those were the headlines on our posters and in social media inviting people to our Open Meeting on 19 June. We were delighted that so many people came to the meeting to hear about the results of the village survey, and to ask us questions about what we’re doing and why.

We want to be as open and accountable as possible throughout the process of writing the Neighbourhood Plan, and we welcomed the chance to answer questions and to explain the next stage of the process. If you were unable to attend and

have a question, please email info@stonesfieldplan.com. The slides, script and Q&As will be on the village website, www.stonesfield.online/category/plan/.

The village survey attracted a magnificent number of responses, and has given us plenty of material on which to base your Neighbourhood Plan. The detailed results are available in the Library as hard copy or online on the Stonesfield website, www.stonesfield.online/category/plan/.

So what does happen next?!

We will analyse the survey data and, eventually, write policies and aspirations based on your responses. We will obtain a professional Landscape Assessment and complete our own Character Assessment of the village and surrounding site. We will pull all the parts of the Plan together and send a first version to the Parish Council and then to WODC for approval. An independent examiner (someone with a Planning background) will review it and feedback to WODC, who will send it back to the village for a Yes/No referendum to be conducted by WODC. If the result of that referendum is “Yes”, the Plan is adopted.

The business of writing the Plan will take us many months and be carried out by the Neighbourhood Plan Steering Group and a small band of volunteers. We will update you as we go along on the various aspects of this work. Watch this space!

Caroline Friend
info@stonesfieldplan.com

News from West Oxfordshire

Community Activity Grants

West Oxfordshire District Council is relaunching its Community Activity Grant Scheme, aimed at providing support for not-for-profit community groups in West Oxfordshire which are working to support residents through the cost-of-living crisis.

The scheme has two options, designed to help specific community needs. The first funding option is to address food insecurity: community groups like foodbanks, larders and fridges can apply for a grant of up to £2,500 to help cover costs and sustain services. The second option offers grants of up to £1,000 to provide welcome activities, providing cooked meals, providing information or hiring a space to provide a homework club.

The District Council will welcome applications from community-focused organisations including parish councils, village hall committees, voluntary sector groups and others within West Oxfordshire. To apply or for more information, please visit www.westoxon.gov.communitygrants/.

Air quality and car use



West Oxfordshire District Council is seeking residents' views on air quality and how it is managed in Witney and Chipping Norton, which may be of interest for those

of us who work or shop in those towns. WODC is running a survey from 5 June to 14 July.

While air quality in West Oxfordshire is generally good, in both towns the concentration of nitrogen dioxide (NO₂) has exceeded Government objectives. This has arisen because of the volume of traffic and the presence of 'street canyons' in both towns (stretches of often narrow road with a continuous line of buildings on either side).

As a result, Air Quality Management Areas (AQMAs) have been declared in both towns and the District Council is developing an Air Quality Action Plan for each. The measures under consideration aim to reduce the volume of traffic, encourage cycling and walking, possibly introducing car parking charges and working with bus operators to maintain a commercially sustainable and comprehensive network of services.

The action plans can be viewed at Witney Town Hall and The Guildhall, Chipping Norton, or online at www.yourvoice.westoxon.gov.uk/en-GB. You can submit your views in the survey at that online address, or at www.yourvoice.westoxon.gov.uk/en-GB/projects/air-quality-action-plan-for-chipping-norton-and-witney.

Alternatively you can reply directly to ers@westoxon.gov.uk with the subject AQAP Feedback.

From our County Councillor

Unpaid carers strategy

Oxfordshire County Council has developed a new strategy for unpaid carers and the final version is currently under consultation. The strategy aims to identify where carers are, to increase awareness of the support available to them and to increase the level of support.

Supply chain emissions policy

OCC has a new policy on reducing carbon emissions as a result of the goods and services procured by the Council. The policy will be decided in OCC Cabinet on 20 June.

Rail link feasibility study completed

A feasibility study commissioned by OCC, for a new rail link between Oxford, Witney and Carterton has found that a rail link would be feasible and could be justified in transport strategy terms. The route would cost £700 - 900 million and require government funding.

New chair of council and cabinet

member: Cllr Felix Bloomfield (Conservative, Benson and Crowmarsh) has been elected chair of the council, while Cllr Michael O'Connor (Labour, University Parks) takes over the cabinet portfolio for public health and inequalities.

Proposed move for OCC: OCC is looking to rationalise its property portfolio. As part of this, OCC is looking at moving its Oxford City presence from County Hall to Speedwell House. Usage of the historic part of County Hall would continue.

Councillor priority fund: Open for applications

Stonesfield award: Councillor Priority Fund award of £500 has been confirmed towards grass cutter/mower for school and associated playing fields.

Woodstock and Bladon: School extension plans at Marlborough School increasing capacity from 180 to 210 is subject to planning but if approved will be phased from 2024 for opening 2026.

Bus turning point resolution subject to safety audit plus report to cabinet member for delayed decision July 2024. Parking scheme implementation in place. Support for the Woodstock and Bladon News approved funds (£1,000) from Councillor Priority Fund. Cherwell District Council consideration for planning for land adjoining Park View to be considered in July. Bus shelters going ahead at Pine View over the next 4 months.

Wootton by Woodstock: 30 to 20 mph installed and in place.

Glympton: Request for consideration for 30 to 20 mph scheme received.

Tackley: 30 to 20 mph scheme in progress, Tackley Crossing still under consideration.

Steeple Barton: Visited My Bus Bartons which I have previously supported with Councillor Priority funds. They have now been awarded £175,000 by the National Lottery for new electric buses enabling this to happen way ahead of their target timeline.

Cllr Andy Graham
andy.graham@oxfordshire.gov.uk

From our MP

Botley West Solar Farm

Over the last few weeks, I have been contacted by constituents who are concerned by the contents of a recent article published in Private Eye, entitled 'Marlborough light', in issue 1597.

The article raises concerns regarding PVDP and its ultimate ownership. I would like to reassure constituents that I have now raised these concerns with the Government and PVDP directly to ask for an explanation.

At a time when the importance of energy security is apparent as never before, we need to understand what financial interests would be involved in critical national infrastructure or its promotion.

Editor's note: PVDP is Photovolt Development Partners, which has negotiated the lease of 80% of the 3,500 acres of land for the proposed solar farm from Blenheim; the remainder comes from Merton College and two farming companies (see June Slate).

Sewage treatment upgrades

I recently discussed the local infrastructure upgrades currently being planned by Thames Water across West Oxfordshire with the Hanborough Nature Recovery Network. These upgrades will include Witney sewage treatment works, Bampton, Chipping Norton, Church Hanborough, Enstone, Finstock, Middle Barton, Milton-Under-Wychwood, South Leigh and Stanton Harcourt.

It is frustrating that upgrades for Combe sewage treatment works and Brize Norton have not yet been agreed. I will continue to push for further infrastructure upgrades

across West Oxfordshire to ensure the places that desperately require such investment receive it.

Bus fare caps



Access to affordable and reliable buses is vital to people across West Oxfordshire, helping everyone to access work, education, shops, appointments and to stay connected with friends and family. Keeping the cost of fares down will make a real difference to the lives of the millions of people who use them every day. That is why I am glad to report that the £2 bus fare cap will be extended, helping passengers to save money on fares during the cost of living crisis.

Editor's note: The £2 bus fare cap has been extended to 31 October 2023 to help passengers with the cost of living, and fares will then be capped to £2.50 until November 2024.

Robert Courts

robert@robertcourts.co.uk

Education, culture & more

Stonesfield Library

The Library (898187) is open as follows:

Monday 2.30-7pm

Wednesday 10am-12 noon

Thursday 2.30-5pm

Saturday 10am-12 noon.

Val Phillips (891455)

Friends of Stonesfield Library

Summer reading challenge



Are you ready for this year's challenge? Join a superstar team and their marvellous mascots as they navigate a fictional obstacle course. Keep your mind active over the summer break!

The Summer Reading Challenge starts on Saturday 8 July 2023 and runs throughout the school summer holidays. Curious? Come along to the library to find out more and to sign up for the challenge!

More information on www.summerreadingchallenge.org.uk.

Bryony Mallows

FoSL:

Friends of Stonesfield Library

Do you enjoy reading?

Could you spare a couple of hours a month?

Come and join the library team. A great volunteering opportunity!

For further details contact Mike Pollitt (891856)

I'm a Reader...

Amber Hands, 17, is taking A Levels in psychology, German and maths at The Marlborough School in Woodstock. However, an early interest in Greek myths, enabled by a trip to our village library, resulted in her recently writing her sixth form project qualification on a misunderstood Greek goddess.

'We did Ancient Greece in primary school, in year 5. We started reading *'Percy Jackson'* but didn't have time to finish it, so I went to Stonesfield Library and found the book for myself. I was ten. I liked it because there were so many different gods and everyone was linked to everyone and married to their sister.'

Percy Jackson & the Olympians is a five-volume fantasy series written by Rick Riordan which imagines a world where ancient Greek gods live in the 21st century, and one young demigod, Percy Jackson, must stop the evil Titans from destroying

the world. The stories retell Greek myths in exciting modern style.

‘After that, I didn’t read anything Greeky for a while, but then TikTok was recommending me books* and it suggested the *Song of Achilles*, by Madeline Miller, which is written from the point of view of Patroclus, who was an unsung right-hand-man of Achilles in the original myth. Then I read *Circe*, after asking it for my birthday. In this book, Madeline Miller gets the reader on the goddess Circe’s side even though she does bad things. Circe grows up under the sea, falls in love with a mortal man who she then transforms into a sea nymph as he needs to be immortal for them to be together, but then he falls in love with Scylla, another sea nymph, and Circe transforms Scylla into a twelve-headed sea monster, out of jealousy.’

Unfortunately, although this does turn the formerly mortal man-turned-sea nymph off his new, twelve-headed girlfriend, Circe’s display of terrifying evil powers is a big turnoff to him as well. Men!

Amber was intrigued by the portrayal of Circe, both by Miller, but also in the original story by Homer, from *The Odyssey*. ‘It seemed to me that it was one rule for the gods and another for the goddesses. The *Odyssey* misrepresented her; it makes her evil for three pages and then the masculine figure of Odysseus comes along and destroys her.’

Amber found that there ‘wasn’t much out there’ looking at Circe from different angles, so she wrote her EPQ on her. The EPQ – or extended project qualification – is a five-thousand-word essay written by students in year 12 (lower sixth) which counts as half an A Level, and is an

opportunity to explore a subject outside the normal timetable.

Amber is planning to study psychology at university, with a view to eventually becoming an educational psychologist because ‘I see the number of kids who need help and can’t get it’. Her early interest in Circe will certainly stand her in good stead for supporting the misunderstood underdog.

*note to self and other concerned oldies: TikTok isn’t just dance crazes, pornography and Chinese government propaganda.

Eleanor Bailey

.....

Nature notes: Meadow clary on Stonesfield Common



Meadow clary Alan Kendall

Stonesfield Common, our own Site of Special Scientific Interest, designated because it is one of the largest pieces of unimproved limestone grassland in the county, is worth a visit at the moment to see the profusion of meadow clary flower spikes in several large patches. Most of the flowers are dark purple, but shades vary through pale blue to white. Meadow clary was introduced by the Romans. It was used to flavour beers and wines and the seeds were used in a paste to remove particles from the eyes and to reduce inflammation.

It was also used for sore throats, and to clean teeth.



Meadow clary is a Red Data Book plant, classed as Near Threatened, and legally protected under amendments to Schedule 8 of the Wildlife & Countryside Act 1981. It survives only at 21 locations in southern England (although some former sites have had successful reintroductions).

In the past, grasslands would have been grazed, which helps to increase the diversity of plant species and to stop one species taking over. We are fortunate to have had a herd of small white hardy cattle from the Abingdon and Witney College to graze Stonesfield Common over the past few winters. Grazing with cattle helps to

reduce the vigour of the dominant grasses, and creates natural scuffs and scrapes of the ground, with their hooves creating bare ground and pushing the seeds into the ground. This is beneficial for the meadow clary, and the other plant species such as orchids, quaking grass, fairy flax, knapweeds and scabious. These species in turn support a large variety of bees and butterflies, include a large colony of marbled white butterflies.

The meadow clary on Stonesfield Common appears to be thriving, and the number of plants is slowly increasing. At the moment the 3-4 foot spikes of flowers buzzing with bees are looking particularly spectacular.

If you are interested in learning more about this plant, or other plants in the area, do get in touch. The local Wychwood Flora Group is a friendly informal group monitoring and looking after rare plants in beautiful locations in West Oxfordshire.

Genny Early

wychwoodfloragroup@gmail.com

.....

A rare sighting...

Recently seen crossing the road at Fawler, was a polecat! It was just a fleeting glimpse, so it might have been a pure polecat or a ferret x polecat hybrid.

Martin Gascoigne-Pees

STONESFIELD VOLUNTARY TRANSPORT SCHEME

Our volunteer drivers are available to take you to local medical appointments or to the hospitals in Oxford and Banbury.

We make no charge but welcome a donation towards expenses.

COVID safety precautions are still in place, if you need them.

Please call or email to book transport in July:

Viv Kendall 01993 891803 or stonessfieldvts@gmail.com

Clubs, societies & sport

Stonesfield Gardening Club

We had a talk from Russell Attwood last month, telling us about his version of No-Dig Gardening. On his allotment this entails covering any weedy patch with a layer of cardboard, which is then in turn covered with wood chips, grass cuttings, pulled weeds, leaves or compost. He will then continue to build up layers as if he were making a compost heap. The soil stays moister underneath these layers, and crops can be planted by going through the layers to the soil underneath.

Bearing a strong resemblance to Michael Palin, Russell kept us amused, while we wondered if he was going to burst into the *Lumberjack Song*. Not a song about trees, but he did treat us to a song about pumpkins at the end!

No talk this month, but we will be visiting the garden at Sezincote, near Moreton-in-Marsh on Thursday 13 July. Please contact me if you would like to be added to the list.

Diane Bates

Secretary, Stonesfield Gardening Club

diane@bateshome.co.uk

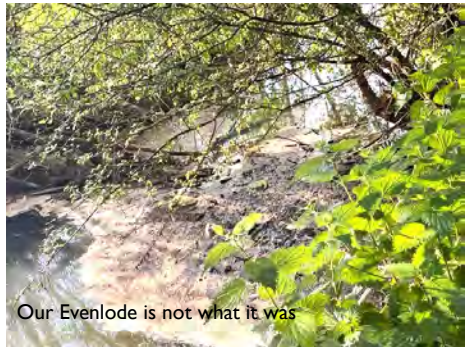
www.stonesfieldgardening.info

Stonesfield Environment Group

Looking at our river

It was a beautiful evening when we ventured out to walk the banks of the Evenlode with Eoghan (pronounced Owen). Eoghan works for the Evenlode Catchment Partnership (ECP), and

working with communities who care about and want to improve the river is part of his remit. The ECP's aim is to return the Evenlode to 'Good Ecological Status' and they get involved in biodiversity, water quality and flood plain management projects with this aim in mind.



Our Evenlode is not what it was

Somewhat naively I thought he might take one look at our river and suggest a range of things that could be done at various locations to improve it. However that's not quite how it works. The first thing to be established is who owns the river banks and are they interested in getting involved in these kind of projects; if yes, then what kind of projects are suitable and most importantly how will they be funded? We are putting our heads together on this now...more anon.

Last month we gave you some factual data on the river... mainly around the amount of legal dumping of raw sewage into the Evenlode by Thames Water. This month we have a few more juicy morsels.

Do you know... the sewage treatment works at Finstock discharged untreated

sewage into the Evenlode for 3 hours on 11 June?

Do you know... the sewage treatment works at Combe discharged untreated sewage into the Evenlode for nearly 10 hours on 12 June?

Do you know... that we have no idea *how much* sewage is discharged as there is no volume data available... all we know is the number of hours this is happening. Remember last year there were over 450 hours of sewage dumping into the Evenlode just from these two works; we don't know how many swimming pools that might fill...although you wouldn't want to swim in it!

Do you know... that the water industry in England was privatised in 1989 and the model used in England – full privatisation – is actually quite unusual; only England and Chile (under Pinochet!) and a few US states adopted this model. Most other countries use a public-private partnership model.

Do you know... that Welsh Water is run as a not-for-profit company, Scottish Water is publicly owned and Northern Ireland water is a government-owned company. I wonder if their water tastes sweeter?

What can you do? Make sure you know how to treat your own waste water and get involved with us as part of our campaign. Join us...

Julie Curran
juliecurran0@gmail.com

Tree planters' news

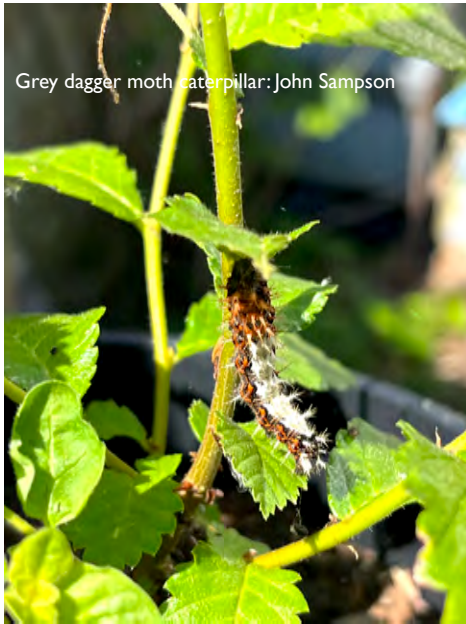
April and May have been busier than expected. We have now planted just over 1,000 trees and hedging plants, so we are well on our way to one per person. This has mainly been due to new hedges planted round the village. We have also had some weather anxiety, much relieved over the last week of rain.

We have fantastic news on the trees for Madagascar: £816 were raised on Crowdfunder and we have some additional funds to develop a tree walk (details to follow) and for further trees in the year ahead. We have a certificate for sponsoring 1600 trees in Madagascar.



As well as plans for the tree walk, we have registered as a site to facilitate 'native trees in gardens' and we will have details of a giveaway later in the year. If you have a space, we can help.

Just over a year ago wych elm seeds from Stockey Wood were sown and grown. Some saplings have been planted and about 25 looked dead from the cold, or so I thought.



Grey dagger moth caterpillar: John Sampson

They have all grown and grown, apart from two whose leaves have been shredded. Both had a grey dagger moth caterpillar; one has turned into a chrysalis and the other vanished; probably a snack for a bird. The grey dagger moth is a specialised elm moth and it is amazing that it found first-year saplings around the back of a greenhouse.

John Sampson
john.sampson9@btinternet.com

Stonesfield Food Group

From Winter Warmer to Spring Social, and now Summer Social! A better and all-year-round name is now the Stonesfield Social, which is a great description of what is a very informal and fun evening.

The Food Group is delighted with the response to the weekly (term time) community meal we are offering at the Village Hall on Tuesdays, 5 – 7 pm. We are serving up to 70 meals, mostly from

surplus food courtesy of The Oxford Food Hub, to all ages; as well as providing relaxation, a chance to chat with neighbours and craft activities for children. We also have a range of advice leaflets available.

The Seniors' Café, which runs on the same day but at the earlier time of 3 – 4 pm is also proving popular, and we regularly have a good-sized crowd for tea, coffee, cakes and lively conversation.

We would love to get even more of the community involved and sharing the fun. There are several ways in which you can support this great community social initiative:

Practical support

Join our lovely band of volunteers who cook, serve, wash up, craft and chat. You can volunteer on a weekly, monthly or other basis, to suit your commitments.

Donations

Not only cash – we would love to share your garden or allotment surplus, or use up craft materials.

Spread the word

Could you make sure your friends, neighbours and relatives know that fabulous free food and great company are available to all? Could you bring along a shy friend, or take home a packed meal for a neighbour?

The Stonesfield Social – by everyone, for everyone!

Julie Curran
juliecurran0@gmail.com

JUNIOR TAE KWON-DO

The Korean art of Self-Defence

Develop your children's self-confidence, concentration and help them to learn respect for themselves and others.

New lessons developed to be fun and informative for ages 5-17.

Stonesfield Village Hall
Mon and Thur: 5.30-6.30pm

****Come and try a complimentary session****

ITF registered international instructor
James Kumar CRB vetted

Further information, contact James
01865 772883 07788 583 965
Jameskumar@hotmail.co.uk

Stonesfield Tennis Club

The club was established over 100 years ago with membership open to all at very competitive subscription rates. The two astro-turf tennis courts were re-laid in 2018 and are in excellent condition with plenty of court availability.

Phone: 07795 441986
(Andrew Tacon; Chairman)

Website:
[https://clubspark.lta.org.uk/
StonesfieldTennisClub](https://clubspark.lta.org.uk/StonesfieldTennisClub)

Email: stonesfieldtc@gmail.com
Facebook: [@stonesfieldtennisclub](https://www.facebook.com/stonesfieldtennisclub)
Instagram: [@stonesfieldtennis](https://www.instagram.com/stonesfieldtennis)



Stonesfield's Multi Use Games Area with Children's Play Area behind

Church news

Church of England Worship at St James the Great, Stonesfield

(Benefice of Stonesfield with Combe Longa)

www.stonesfieldparishchurch.org

Rector: Rev Ralph Williamson,
rector@scbenefice.org, 01993 891872

Churchwarden: Lindsey Sellar
stonesfield@stonesfieldparishchurch.org

St James' Centre bookings:
sjcsbookings@gmail.com

For any enquiries or help, including pastoral support, please do contact us.

From the Rector – If not now, when?

I can see lots of things which should be done, which are not being done. The transition to green energy is one example. Surely all new homes should be required to meet the best standards of insulation, have heating systems which run on electricity, and have roofs with solar panels. Electricity should be sold back into the grid when it is not needed, or stored by electric cars. Older properties should be retrofitted with solar panels and the cost shared by society, as we will all benefit from it. Churches too should be generators of energy. I am ignorant of what is being done to make this possible, but I can see little happening to speed the day when we no longer need polluting fossil fuels.

Social care needs to be reformed urgently, and carers well paid, well trained and well

respected, just like we promised during Covid. Sewage being pumped into our devastated rivers has caused outrage, but I am seeing little being done to prevent it. And then there is the housing crisis, the rail network, lack of support for mental health, and more. Maybe I am becoming a grumpy old man (I sincerely hope not!) but I meet lots of people who share my frustration.

There are few occasions when we can make much difference to these things, and we are grateful to the people who campaign valiantly to bring about the change we need. But perhaps the frustration we feel about things out there in the world could be channelled into our own lives, and into the changes which we can make happen in the way we live, in our relationships and our choices. Just like the social changes we might hope for, many of us have personal issues which get left, put off, avoided, and never properly addressed.

I am inspired by the phrase, 'If not me, who? If not now, when?'. The saying has been quoted in various forms by US Presidents Kennedy, Reagan and Obama, and was used in a speech about gender equality at the United Nations by actor Emma Watson in 2014. But its origins go back to the early history of Judaism, to the famous Rabbi Hillel, who died just a few years after the birth of Christ. In the section of the Jewish *Talmud* called *Ethics of the Ancestors*, Hillel says, 'If I am not for myself, who is for me? When I am for

myself, what am I? If not now, when?' (Pirkei Avot 1:14).

These words were quoted by the commentator Rashi, in relation to the honest address which Moses gave to the people of Israel before he died. We often put off the things we should say or do, but no one knows the day of his or her death, and if something deserves to be said, we should say it now. If something ought to be done, we should do it now. If we want to bless our loved ones, or say anything else of significance, we should do so without delay, for we might not have the warning that Moses received that his days were soon ending. There are many things which we should not put off, including things which will make our own lives more abundant.

Perhaps, for some of us, going to church, and either beginning or resuming the practice of regular worship is one of those things. If this is something you have put off or put out of mind, please may I encourage you to come and join us? You will receive a warm welcome. If not me, who? If not now, when?

Rev'd Ralph Williamson
Rector

Services

Sunday 2 July [Fourth Sunday after Trinity]

| | | |
|--------|-------------|------------------------------|
| 8am | Stonesfield | Holy Communion [BCP/said] |
| 9.30am | Combe | All Age Worship |
| 11am | Stonesfield | All Age Worship |

Sunday 9 July [Fifth Sunday after Trinity]

| | | |
|--------|-------------|------------------------------|
| 8am | Stonesfield | Holy Communion [BCP/said] |
| 9.30am | Combe | Parish Communion |
| 11am | Stonesfield | Parish Communion |

Sunday 16 July [Sixth Sunday after Trinity]

| | | |
|--------|-------------|------------------------------|
| 8am | Stonesfield | Holy Communion [BCP/said] |
| 9.30am | Combe | Parish Communion |
| 11am | Stonesfield | Parish Communion |
| 5pm | Combe | Evensong |

Sunday 23 July [Seventh Sunday after Trinity/St James' Patronal Festival]

| | | |
|--------|-------------|------------------------------|
| 8am | Stonesfield | Holy Communion [BCP/said] |
| 9.30am | Combe | Parish Communion |
| 11am | Stonesfield | Parish Communion |

Sunday 30 July [Eighth Sunday after Trinity]

| | | |
|------|-------------|------------------------------|
| 8am | Stonesfield | Holy Communion [BCP/said] |
| 10am | Stonesfield | United Benefice Communion |

Wednesdays

| | | |
|--------|-------------|----------------------------------|
| 9.30am | Stonesfield | Holy Communion |
| 11am | Combe | Morning Prayer (12 & 26 July) |

Roman Catholic Worship

Silence

In quietness and trust is your strength' (Isaiah 30:15)

In the New Testament, despite his spoken words of wisdom, charity and forgiveness, Jesus is sometimes silent:

'And he strictly charged and commanded them to tell this to no one, saying, "The Son of Man must suffer many things and be rejected by the elders and chief priests and scribes, and be killed, and on the third day be raised. (Luke 9:21-22).

And

'So he questioned him at some length, but he made no answer' (Luke 23:9).

From this we can understand that Jesus understood that 'timing is everything':

For everything there is a season, and a time for every matter under heaven:..

a time to tear, and a time to sew;

a time to keep silence, and a time to speak. (Eccles 3:1, 7)

Jesus chose his timings and words with care; his actions were to speak for him and for us.

Jesus understood that in our restless and fretful world, silence and stillness give us opportunity to think and reflect. Constant noise and activity distracts us from hearing God's voice and its meaning for us. As Thomas à Kempis wrote in "The Imitation of Christ (1418):

'In silence and quietness the devout soul makes progress and learns the hidden mysteries of the Scriptures'.

In other words, silence and stillness gives us deeper perspective, and silence can offer us more meaning than words.

Holy Mass

Sunday Mass at 9.15 am

Wednesdays and Fridays at 9.15 am

For parish updates, any further information and further support, please see www.stteresaschurch-charlbury.com/ or contact Fr. Clive Dytor, parish priest: chair. stteresaschurchcharlbury@gmail.com.

Roman Catholic Community in Stonesfield

.....

Stonesfield Methodist Church

Preachers for July

- 2 11am Stella Bristow
9 11am The Reverend Stephen
Bywaters
16 11am The Reverend Andrew Biggs
Church Anniversary, Holy
Communion, and
Membership Service
23 11am Local Arrangement
30 11am Marjorie Brown

Teas!

A big thank you to everyone who came and supported the Methodist Teas on June 10th. It was a splendid afternoon, a time to catch up with old friends and meet new ones.

An apology from the Editor: the item in the June Slate about the Methodist Teas should have been placed in the Notices and News section earlier in the June Slate rather than at this point. This was an oversight and we trust it did not detract from attendance at the event.

A tribute

On a recent visit to London, the sun shone and I strolled leisurely along by the river Thames. Quite unexpectedly I came upon the Covid Wall of Remembrance. It stretched ahead as far as the eye could see, covered from top to bottom with small red and pink heart shapes, each one filled with tender words for someone deeply loved and cherished. The hearts and I went on and on and the messages seemed never to end.

Such a moving experience, a privilege to see and a memory to be kept forever.

And now these three remain; faith, hope and love, but the greatest of these is love.

(Corinthians 13:13)

Come to a service soon.

Kathleen Albért (891733)

| | |
|-----------------|-------------------|
| JEM | • NO FUSS • |
| CHIMNEY | • NO MESS • |
| SWEEPING | • NO PROBLEM • |
| | Tel: 01865 772996 |

OXAD

Stonesfield's new Architecture and Design Studio

- All planning applications
- Listed building consents
- Building Surveys
- Renovations, conversions and new build projects
- Full design packages from concept to construction

Need advice? We are happy to help, feel free to call us



<https://www.instagram.com/oxa.design/>



Andrew 07462879191

Andrew A. Adams FCCA

Chartered Certified Accountant

Quality personal service for your
Accounting, Taxation and Business needs

Competitive fees agreed in advance

Free initial meeting

Telephone: 07790 854574
01993 891280

Email: aaadams@TalkTalk.net

Foot Health Professional

Joanna Attridge
MCFHP MAFHP



Foot problems?
I will visit you in
the comfort of
your own home

Based in Combe
Fully qualified and insured

07961 620 292

joannafoothealth@gmail.com

www.joannafoothealth.co.uk

onevillage.com

One place to go for interiors

Online & On the A44 in Woodstock

The social choice

WORKING WITH
CRAFTMAKERS' CO-OPS
IN ASIA & AFRICA
SINCE 1979



OXFORDSHIRE PEST CONTROL

Your local family run pest control company. Let us take care of your home and make it pest free. Call our office for a free pest control survey. Fully trained and insured pest control experts.

 [07481553551](tel:07481553551)

 sales@oxfordshirepestcontrol.uk

www.Oxfordshirepestcontrol.uk



Resilience PILATES

Back or Joint Pain?
Pre or post operative rehabilitation?
Need to improve strength or fitness?
Feeling stiff and inflexible?

Address muscle imbalances, improve posture, develop your core and build fitness through individual Pilates sessions in our Stonesfield studio with reformers, tower, chair and more

Call Lucy on 07484901615 or email info@resiliencepilates.co.uk



INK RIBBON PROGRAM
Post-Operative Workout Enhancing Recovery

COTSWOLD GARDEN DESIGNER

- Looking to improve your outside space but stuck for ideas on how to make the most of it?
- Want somewhere to entertain?
- A space for your children to play?
- Or maybe you just need a quiet place to relax, a calming, scented corner, just for you?



I can provide a full garden design, planting plans or a simple garden report - some ideas of how you could best use your outdoor space and the types of plants that you like and would suit the environment.



CONTACT LORRAINE:

lorraine@cotswoldgardendesigner.co.uk
07516262560
www.cotswoldgardendesigner.co.uk

Enjoyable and friendly art classes

Drawing and painting
Still Life

For more information contact
gabrielekern31@gmail.com

Dog-walking service

Do you work long hours and feel that your dog is not getting the attention and exercise that it needs? I run a dog-walking service for Stonesfield and surrounding areas. I have public liability insurance for peace of mind. Please feel free to call for a quote.
Katrina 01993 891131 / 07824357690
katrinamoss1979@icloud.com



windrushgroup

print | design | web | large format

Celebrating our 50th anniversary, we have been delivering our print expertise to a wide variety of clients from the smallest personal project through to much larger organisations. We pride ourselves in delivering the same level of service for all.



01993 772197

Chris@windrushgroup.co.uk
www.windrushgroup.co.uk

Windrush Group, Windrush House, Avenue Two,
Station Lane, Witney, Oxfordshire OX28 4XW



BLINDS AND CURTAINS

by

WINDOW DESIGN

01993 870606

Made to Measure
blinds and curtains

Complete home service
from measure to fitting

Huge range of fabrics

Fabric showroom open
by appointment

WWW.WINDOWDESIGN.CO

M J Fyson BA BA VetMB MRCVS
The Coach House Veterinary Clinic Ltd
Wroslyn Road
Freeland
Nr. Witney
Oxon OX29 8AQ
E-mail: coachhousevet@outlook.com



We are a traditional independent small animal
Veterinary Clinic

- Opening hours: Mon-Fri 08:00-18:30, Sat 09:00-12:00
- Consultations by appointment only, please phone 01993 880551
- Friendly personal service for dogs, cats and small furries
- Stockists of Symply and Canagan pet foods
- Follow us on Facebook: Coach House Veterinary Clinic

01993 880551

www.coachhousevetclinic.co.uk



Rob Atkinson

Member of the
Chartered Institute of Building

General property
maintenance and
high quality DIY



General repairs
All carpentry - Decorating
Minor plumbing

Prompt, reliable and
recommended service
No job too small

Tel: 07876-275300

robatkinson.ajdw@gmail.com

"A job done well"

Stan Johnston Painter and Decorator

With over 35 years experience in the
trade.

✉ sjohnstonpaint@outlook.com

☎ 07968 865251 or 01993 898730

Roberts Garden Machinery Ltd



- Professional servicing and repairs of most makes of garden machinery
- New & second-hand machinery supplied
- Collection & delivery by arrangement

18 years' experience with LAWNMOWER SALES & SERVICE

Open 8-5 Monday-Friday, 8-12 Saturday

Unit H5, New Yatt Business Centre, New Yatt, OX29 6TJ

Tel: 01993 881320 or email: robert.milloini@btinternet.com

ACE

Car Repairs and Servicing
01993 700041

SERVICING, BRAKES, CLUTCHES, AIR CONDITIONING, EXHAUSTS,
DIAGNOSTICS, MOT'S PREPARED AND ARRANGED

Alan Claridge Engineering is a garage in Witney that has been repairing cars for over 30 years. I now live in Stonesfield and will collect your car from your house and deliver it back free of charge. I service and repair all makes of car so please call me to arrange an appointment.

A.L. SOLE & SON

FUNERAL DIRECTORS

Bidston Close - Over Norton - Chipping Norton - OX7 5PP
01608 644112
office@solefunerals.co.uk
www.solefunerals.co.uk



Your local independent funeral director since 1948.
Providing a considerate and appropriate service
with a refreshingly normal approach.

*24hr Service
*Private Chapel of Rest
*Pre-paid Funeral Plans



PELLMANS Solicitors

- **Business, Agricultural and Employment Law**
Contracts, Legal Compliance & Disputes
- **Property**
Buying & Selling Homes, Commercial & Agricultural
- **Wills, Probate and Trusts**
Tax Planning, Lasting Powers of Attorney & Elderly Client Advice

01865 884400

www.pellmans.co.uk

1 Abbey Street, Eynsham, Oxford OX29 4TB

Home visits and evening appointments available



**THAMES VALLEY
TREE CARE LTD**

Founded in Stonesfield.
Providing a professional, reliable and innovative service in all aspects of tree surgery and hedge management

FREE no obligation quote

Tel: 01993 891381
Mob: 07971018279
Email: info@tvtreecare.co.uk
www.tvtreecare.co.uk

DIRTY CARPETS, UPHOLSTERY, RUGS



Most carpets dry within the hour
Unbeatable results, removes almost all spots & stains
call GRIMEBUSTERS

01993 868924 01865 726983
www.grimebusters.co.uk

Tracey Keeling 

Personal Trainer

The Older Adult Training Specialist

Any age is the right age to exercise.
(Face to face or on-line)

07977 228756
www.hardenhealthandfitness.co.uk

COMPUTER PROBLEM?

DON'T WORRY – HELP IS AT HAND!

With a happy smile and definitely no jargon, we've been helping users and their computers for over thirty years. We have extensive experience of the University system, and we know all about Apple Macs TOO!


RING BOB ON: 01865 880600 / 07768 732123

We come to you with same day service if possible.
We don't charge for the call-out or if we can't fix it.

Sewing & Alterations
... to make that garment fit you!

Fittings, hem levels, and a varied range of alteration and sewing work carried out.
Dresses, Skirts, Tops, Shirts, Jackets, Trousers, Curtains, Cushions and beyond!

Louise Everett-Brown
lou.smiley1@btinternet.com
01993 813873



Lighting Your Way Into The Future

STEPHEN J. WILEY
ELECTRICIAN

Additions • Alterations • Rewiring
Surveys • Security Lighting
Cookers • Showers
Telephone Points

NO JOB TOO SMALL

Tel (01993) 882778/881409

90 Main Road, Long Hanborough, Witney, OX29 8JY
Stephen.Wiley@btconnect.com

best-one 

Suriya Express & Post Office

1 Pendle Court, Pond Hill, Stonesfield
Tel/Fax 01993 898379

—
Bread & Pastries
Fine range of Groceries
Fruit & Vegetables
Beers, Wines & Spirits
New range of Organic Products
Dry Cleaning
—

Opening hours:
Monday to Friday 7am–8pm
Saturday and Sunday 8am–8pm*
Bank Holidays 8am–8pm*

**P.O. closed on Sundays & on Bank Holidays*



All aspects of roof work undertaken

Slates • Tiles • Flat roofs
Chimneys • Valleys • Leadwork
Moss clearance
UPVC fascias • Soffits • Gutters
Advice and estimates free

Freephone
0800 955 5063

Mobile
07817 792194

WOODSTOCK TAXI SERVICE

07766 743081



TOWNHOUSE

● EXECUTIVE TRAVEL ●

- Airports & Stations
- Hospitals & Schools
- Theatres & Restaurants
- Day trips & tours
- Weddings & Proms
- Shopping trips

Our friendly team includes female drivers

www.townhousewoodstock.co.uk



Stonesfield massage

grounding . stability . strength

**A beautiful, female only, massage
therapy treatment room in the village**

For appointments call Kate
07473272503

Have a look at the treatments menu
www.stonesfieldmassage.com



TOWN & COUNTRY
TREES LIMITED



A tree surgery company with
the integrity you can trust.

Tel: **0845 458 2980**

Mobile: **07976 261850**

Email: **info@townandcountrytrees.co.uk**

www.townandcountrytrees.co.uk



Luxury, natural artisan soap and
aromatherapy skincare products,
handmade in Stonesfield.
Speciality orders undertaken.

Tanya Bainbridge

West Winds, The Ridings,

Stonesfield

01993 891949

Visits by appointment

www.stonesfieldsoap.com

info@stonesfieldsoap.com



Perfect Finish

Hand Ironing Service

- Fully Insured
- Collection & delivery
- Shirt ironing and hanging service
- Clothing, bedding and linen
- Based in Stonesfield

Contact Marie: 07969 685 479

perfectfinishironing@hotmail.com

www.perfectfinishironing.co.uk

We care, when it matters most.

An award-winning local family business
trusted by families for over 60 years
with a first class reputation for quality,
value and service.

“Invaluable support”

“Seamless arrangements”

“Nothing was too much”

“Sympathetic and professional”

Above are just some of the many touching
comments we have received about our service.

Learn more about us at

www.jerramsbrothers.co.uk or call us at any time.

Jerrams Brothers

Funerals Funeral planning Memorials Support Est.1949

33 High Street Woodstock OX20 1TE 01993 811491
18 The Kidlington Centre, Kidlington OX5 2DL 01865 374444





New Miss Molly products in stock

Please note new shop hours now open 10am -3pm*
All picture framing by appointment only.

*Closed Tuesdays & Sundays

Cotswold Frames – Market St – Charlbury – OX7 3PL
01608 811805
www.cotswoldframes.co.uk
info@cotswoldframes.co.uk



**COTSWOLD
FRAMES**
GALLERY • GIFTS



Maeve O'Donnell Acupuncture

**Acupuncture for stress reduction,
pain relief, arthritis, migraine, fatigue,
hormone imbalance, and more.**

Appointments available at my Stonesfield
clinic or in your own home.

To find out more or arrange an initial
consultation please contact me on 01993
898102 / 07791 278618

maeve@maeveodonnellacupuncture.co.uk
or visit

www.maeveodonnellacupuncture.co.uk
f @ maeveodonnellacupuncture

Woodstock Solicitors

WILLS ~ PROBATE ~ POWERS OF ATTORNEY

INHERITANCE TAX PLANNING

Tel. 01993 811 792

Email info@woodstocklaw.co.uk

Woodstock Solicitors - 1st Floor - 32 New Road - Woodstock - OX20 1PB



Hypnotherapy

For help with anxiety, stress, pain control, insomnia, phobias, unwanted habits, confidence and self-esteem, exam and interview nerves.

Contact: Linda Flanigan
Clinical Hypnotherapist
GHR Registered & Member (Lic.) of National Council for Hypnotherapy

Tel: 07866 360359
Email: linda@lfhypnotherapy.co.uk
www.lfhypnotherapy.co.uk

Imagine Life

if you had your own...

Gardener
Decorator
Babysitter
De-clutterer

I can help you clear your clutter, weed out your wardrobe and find new homes for your unwanted items.

Dog Walker
Spring Cleaner
Moving House Help
House & Pet Sitter...

all rolled into one!

For one-off events or regular help please contact Lindsey
hatsoffstudios2@gmail.com or call
01993 898620 07941 561471



Providing tailored support for adults of all ages, to help stay independent at home.

- ★ Pet care
- ★ Light gardening
- ★ Meal preparation
- ★ Baking
- ★ Companionship
- ★ Housework
- ★ Admin
- ★ Shopping
- ★ Decluttering
- ★ Seated balance exercises

Free initial home visit, to discuss your requirements.
DBS cleared. Fully Insured. Excellent references.

COVID-19 vaccinated.

Experience:

Currently working as a Carer & PA, in Clients' own homes (+12 years).
Specialised in Elderly Care.
NHS Occupational Therapist (3 years).
Professional Cat sitter:
<https://catinaflat.co.uk/pet-sitter/295873>

Contact Daisy: daisyread17@gmail.com
07811 421 730

MICHAEL PRICE & SON PLASTERING

58 Ticknell Piece Road
Charlbury, OX7 3TW

Tel 01608 811642
Mobile 07710 170049

GEOFF BOOTH

Landscaping • Paving • Walling
Driveways • Fencing • Brickwork
Building maintenance
Garden maintenance
Free quotations
Tel: 01993 891945
Mob: 07710 628248

Email: geoffboothlandscaping@hotmail.com

Rita Hutchings Painter & Decorator

Internal & External.

Quality work.

Clean, efficient, friendly worker.

Contact me for free estimates.
01993 772078 or 07826 011560



PRICE LIST

1 BUILDERS BAG £90.00

2 BUILDERS BAGS £175.00

3 BUILDERS BAGS £250.00

PRICE INCLUDES VAT AND DELIVERY WITHIN
10 MILES OF LONG HANBOROUGH

☎01993 880 500

✉ info@bowards.co.uk

PROBLEM FEET ?!

NAIL CUTTING. CORNS. CALLOUS.
HARD/DRY SKIN. FOOT MASSAGE.

TREATMENT IN THE COMFORT
OF YOUR OWN HOME!

Sharon Davies MCFHP/MAFHP
01993 891132/ 07941843353

OVER 18 YEARS EXPERIENCE

REGISTERED MEMBER OF THE BRITISH
ASSOCIATION OF FOOT HEALTH
PROFESSIONALS

Bed and Breakfast at Combe

For details
please view
www.greenclose.net
or call 01993 891223

A. K. P. DIXON

Home & Garden Maintenance
& General Handyman

For all those jobs you need doing
inside & outside – I'm your man!

Call Ade on 01993 813873
or 07825 631111

or email handymanade@btinternet.com

PJR Plumbing & Heating

- * Installation
- * Maintenance
- * Repair & Service
- * Gas Appliances & Safety Certificates



Tel: 01993 881069
MOB: 07515 733398

500807

D S JONES

BUILDING, ROOFING
&

PROPERTY MAINTENANCE

All aspects of building, roofing and property maintenance undertaken

For all enquiries call or email

07496149990

dsmaintenance@hotmail.com


Instagram: @dsjonesbuilding




DJR MILES

BATHROOM, PLUMBING & HEATING ENGINEERS LTD

www.djrmiles.co.uk

 BATHROOM & PLUMBING

 GAS & OIL HEATING SYSTEMS

 RENEWABLE HEATING SYSTEMS

t: 01993 891533 m: 07860 142230

e: [djrmpheltd@yahoo.co.uk](mailto:djrmbpheltd@yahoo.co.uk)



BLENHEIM PALACE

Engage every sense on a summer adventure to Britain's Greatest Palace, where there are a myriad of new activities to see, hear, taste, touch and smell. There's only a few weeks left of our Royal Connections: Crowns and Coronets exhibition which features regency-inspired costumes from seasons one and two of Bridgerton, and you can get your floral fix as well as an array of other gardening goodies at the Blenheim Palace Flower Show from Friday 23rd – Sunday 25th June. If you're after something active there will be boating, paddleboarding and kayaking available on the Great Lake from 21st July until 3rd September, and don't forget to enjoy an afternoon tea with a Palace view at Clementine's on the Lawn, our stunning glass restaurant here for a limited time only until Autumn.

BLENHEIM

If you have visited in the last few weeks you will have noticed our colourful new mural covering Flagstaff Gate, which is currently being restored as part of an ongoing £2 million pound conservation project. The mural was designed using images created by thirty young people from Oxfordshire Youth who came to the Palace earlier in the year for a week's workshops of artistic inspiration from the Palace and grounds. The art sessions were led by commissioned visual artist Kate Turnball and the finished mural combines drawings, digital imagery and text such as poetry inspired by the Palace.



BLENHEIM ESTATE

On your recent visit to our Estate you may have noticed that some of our grassland areas are looking a little overgrown. This is on purpose! We have intentionally decided to leave these areas of grassland long to support the habitats of bees, bugs and butterflies (and lots of critters) By refraining from mowing some of our grasslands, we are promoting the activity of our natural pollinators as they explore the blooming wildflowers. This has also allowed for the growth of rare native plants such as pyramidal orchids, bird's-foot trefoil, and bee orchids in our Parkland. Don't worry though, our Gardening Team are mowing paths in some of the long grassland areas so you'll still be able to find shade if needed on those hot sunny days.

Keep up-to-date with our news and latest events by signing up to our newsletter at

blenheimpalace.com

FLOWERS

ESTATE AGENTS



"The Agent of choice in Woodstock and the surrounding villages "

Call 01993 627766 for confidential advice on all property matters.

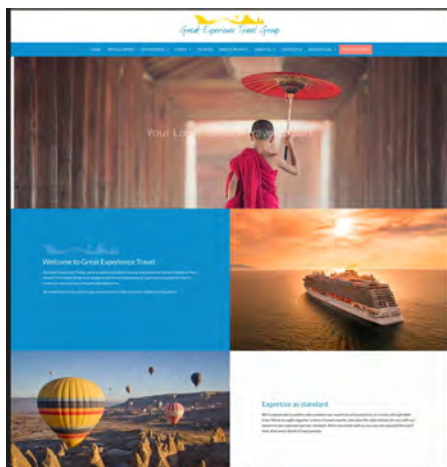
RESIDENTIAL SALES & LETTINGS | LAND & NEW HOMES

woodstock@flowersestateagents.com | flowersestateagents.com

LONDON HOUSE, 16 OXFORD STREET, WOODSTOCK, OX20 1TJ



Our fabulous new website:
www.greatexperiencetravel.co.uk
 is now up and running



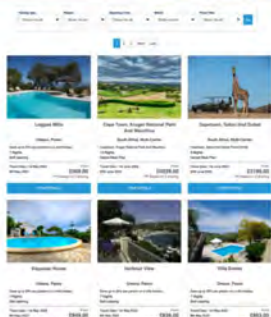
It has lots of exciting new features, and we think that the website looks great. However, it is still a 'work in progress' and has to meet your needs.

If you can see anything that we can do which would make the site even better or even easier to use, please do let us know.

It doesn't mean that we don't want to see you in the office.

This is still our No.1 priority.

The site will just help you find even more holiday options and will make the service that we can offer you even better.



Waterloo Walk, High Street, Witney, OX28 6EU

Tel: 01993 627815

email: info@greatexperiencetravel.co.uk

www.greatexperiencetravel.co.uk





The Names of a Hare:

A free-standing sculpture featuring dialect, regional and riddle names for the beautiful European Hare often seen around Stonesfield.